



State of the District

February 2012



Economy

Suffolk Coastal District Council	Suffolk		East of England		National	
	Trend	Score	Trend	Score	Trend	Score
Economy						
Economic Scale	▶	B	▶	C	▶	C
Productivity	▶	A	▶	C	▶	B
Economic Change	▶	D	▶	C	▶	C
Industrial Structure	▶	B	▶	D	▶	C
Business & Enterprise	▼	D	▶	D	▶	E
Skills & Qualifications	▶	A	▶	A	▶	A
Labour Market	▲	A	▲	A	▲	A

Trend	Indicator	Suffolk Coastal					Eastern					National							
		2011-12	2010-11	2009-10	2008-09	2007-08	2006-07	2011-12	2010-11	2009-10	2008-09	2007-08	2006-07	2011-12	2010-11	2009-10	2008-09	2007-08	2006-07
▲	Percentage working age population in employment	78.8	77	76.4	72.6	75.3	73.4	73.5	75.1	75.7	75	70.3	70.3	72	72.6	72.5			
▼	Count of active enterprises	5,040	5,240	5,310	5,340	5,140	233,090	238,330	238,355	232,185	225,140	2,241,375	2,282,200	2,265,740	2,222,555	2,151,845			
▼	Four year survival rate of enterprises (%)	54.7	55.8	55.9	62.1		54.1	55.4	56.1	56.9		53.1	53.7	54.6	54.3				
▲	Median total gross annual earnings (£, resident)	21,418	21,228	22,161	24,002	20,342	19,746	22,592	22,263	22,513	21,846	20,850	20,274	21,467	21,337	21,447	20,913	20,118	19,500
▲	Job Seekers Allowance claimants as a percentage of resident working age population	1.8	1.8	2	1.1	0.9	1.1	3.1	2.8	3.2	1.8	1.6	1.8	3.9	3.5	3.9	2.4	2.1	2.4
▲	Percentage of JSA claimants that have been out of work for more than a year	16.6	13.3	10.2	4.9	9.6	10.4	18.2	16.1	13	7.9	15.1	15.9	18.5	16.2	13.6	8.9	14.8	17
▲	Percentage working age population claiming key benefits	9.2	9.1	9.3	8.1	8.2	8.4	11.5	11.6	11.8	10.2	8.3	10.5	14.5	14.6	14.9	13.2	13.4	13.9
▲	Percentage working age population with NVQ level 3 or above	58.1	52.5	50.6	45.8	45.2	48.2	46.9	44.4	45.5	44.3	51	49.3	48.2	48.4	47.9			



Society

	Society					
	Suffolk		East of England		National	
	Trend	Score	Trend	Score	Trend	Score
Knowledge Workers	▼	C	▶	C	▼	C
Prosperity	▶	A	▶	B	▶	B
Deprivation	▶	A	▶	B	▶	B
Inequality	▶	D	▼	C	▼	C
Health	▼	B	▶	B	▶	A
Crime	▶	A	▼	B	▼	B

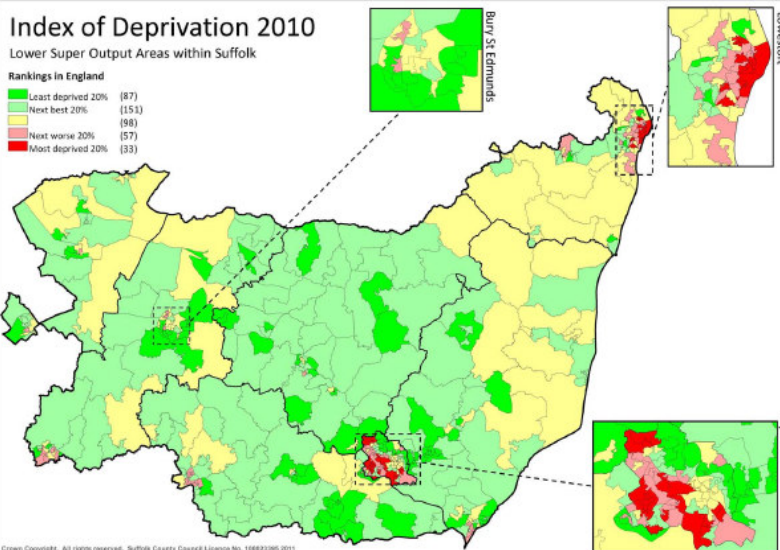
Trend	Indicator	Suffolk Coastal					Eastern					National						
		2011-12	2010-11	2009-10	2008-09	2007-08	2011-12	2010-11	2009-10	2008-09	2007-08	2011-12	2010-11	2009-10	2008-09	2007-08		
▲	Infant mortality		4.8	3.9	4.1	4.2		4.2	4.2	4.1	4.1		4.6	4.8	4.9			
▼	Life expectancy at birth (m)		80.4	80.6	80.6	80.3	79.8		79.6	79.3	78.9	78.7	78.3	78.6	77.9	77.7	77.3	
▼	Life expectancy at birth (f)		83.7	83.8	83.8	83.4	82.9		83.2	83.0	82.7	82.6	82.3	82.6	82.3	82.0	81.8	81.6
▼	Under 18 conception rates 3 year aggregates			20.2		24.8			31.9		32.9		40.2				41.2	
▲	Domestic burglaries per 1,000 households		5.82	3.72	2.6	4.5	4.1		8	9.6	9.5	9.1	11.1	11.55	12.5	12.8	13.4	
▼	Violent offences committed per 1,000 population		8.0	9.0	7.8	9.4	9.8		12	12.2	13.2	14.6	15.0	15.7	16.4	17.6	19.3	
▼	Theft of a vehicle per 1,000 population		0.8	0.9	0.7	0.8	1.1			21.1	2.6	2.8	5.7	2.2	2.7	3.2	3.6	
▶	Sexual offences per 1,000 population		0.7	0.7	0.6	0.6	0.8		1	0.8	0.8	0.9	1.0	1.0	0.9	1.0	1.1	



Index of Deprivation 2010

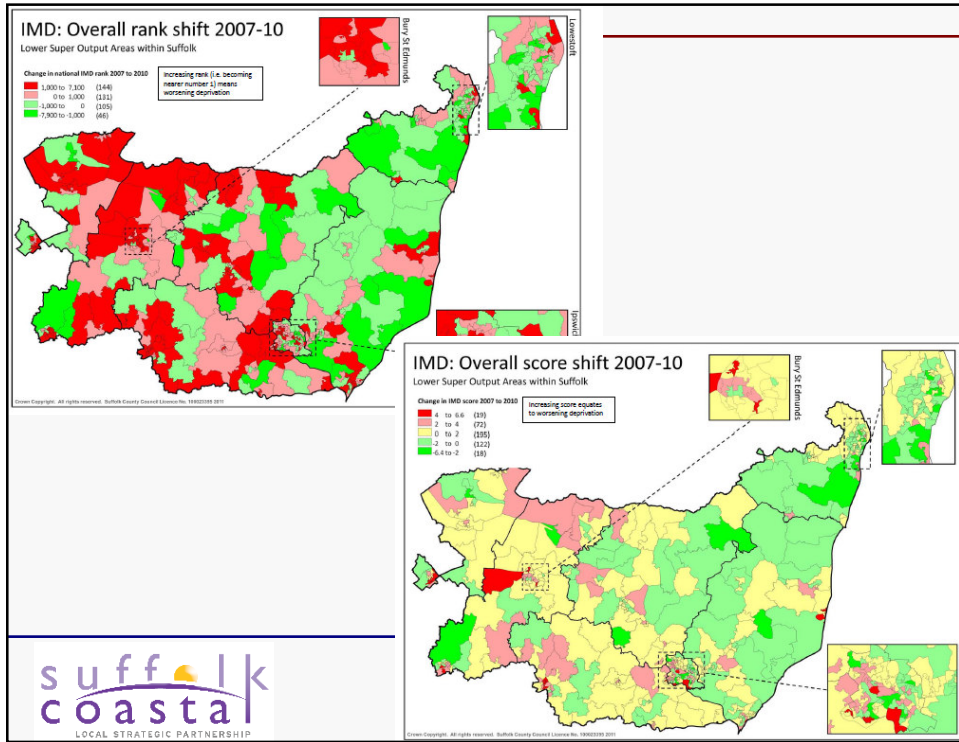
Lower Super Output Areas within Suffolk

- Rankings in England
- Least deprived 20% (87)
 - Next best 20% (151)
 - Next worse 20% (57)
 - Most deprived 20% (33)



Crown Copyright. All rights reserved. Suffolk County Council Licence No. 10882305 2011





Environment

		Environment					
		Suffolk		East of England		National	
		Trend	Score	Trend	Score	Trend	Score
Housing Affordability		▼	D	▼	D	▲	C
Floorspace Change		▶	D	▶	D	▶	D
Connectivity		▶	E	▶	E	▶	E
Services		▶	E	▶	D	▶	D
Amenities		▶	A	▶	C	▶	D
Natural Environment		▶	A	▶	A	▶	A

Trend	Indicator	Suffolk Coastal					Eastern					National					
		2011-12	2010-11	2009-10	2008-09	2007-08	2006-07	2011-12	2010-11	2009-10	2008-09	2007-08	2006-07	2011-12	2010-11	2009-10	2008-09
▲	House price to income ratio	7.87	6.61	7.78	7.31	7.15	7.49	6.8	7.76	7.87	7.48	7.01	6.27	6.93	7.23	6.97	
▼	Average annual domestic consumption gas and electricity (kWh)	n/a	20,002	21,234	22,269	23,003	n/a	19,893	21,284	22,277	22,905	n/a	19,536	21,105	22,006	22,698	
▼	TOTAL Volume of household waste collected per head (kg)	399	390	408	434	462		521			523	449	457	473	495	506	
▲	Percentage diverted from landfill (reused, composted or recycled)	58.6	51.8	48.5	42.9	38.3	48.8	46.1	44.5	41.2	38.3	41.2	39.7	37.6	34.5	30.9	
▼	Total CO ₂ emissions (kt)		775	814	833	858		45,371	45,151	44,455	45,151		454,969	505,917	518,322	527,101	
▼	Total CO ₂ emissions per capita (tonnes)		6.2	6.6	6.8	7.1		7	7.6	7.9	8.1		7.4	8.2	8.5	8.7	

suffolk coastal
LOCAL STRATEGIC PARTNERSHIP

Potential issues

- Unemployment: young people, long-term
- Business survival trends
- Health / Crime?
- Education & skills
- Deprivation and inequality trends
- Access to services