



State of the District 2010:

Report for Suffolk Coastal Local Strategic Partnership

Contents

EXECUTIVE SUMMARY	3
<i>Report card</i>	4
<i>Place Survey 2008/09</i>	5
<i>Quality of Life indicators</i>	6
INTRODUCTION.....	8
<i>Purpose</i>	8
<i>History</i>	8
<i>Data</i>	8
ECONOMY.....	9
<i>Overview</i>	9
<i>Earnings</i>	13
<i>Industrial structure</i>	15
<i>Businesses</i>	17
<i>Skills & qualifications</i>	20
<i>Labour market</i>	23
SOCIETY	26
<i>Overview</i>	26
<i>Health</i>	29
<i>Crime</i>	30
<i>Knowledge workers</i>	33
<i>Prosperity</i>	36
<i>Deprivation & inequality</i>	36
ENVIRONMENT.....	39
<i>Overview</i>	39
<i>Natural Environment</i>	41
<i>Housing affordability</i>	43
<i>Access to Services</i>	45
<i>Amenities</i>	46
<i>Commercial & industrial property</i>	46
<i>Connectivity</i>	47

Executive Summary

Economy – “where people want to invest”. Suffolk Coastal shows significant improvement in skills and qualifications when compared to other Suffolk authorities, and other districts in the East of England and nationally. It is now in the top 20% of districts in all three areas. The proportion of students getting 5+ GCSE results (A*-C) is above the national average, and the proportion achieving 5+ GCSE results (A*-C) (incl. English/Maths) is above the regional figure.. This issue was flagged red for Suffolk’s Area Assessment.

Suffolk Coastal’s position remains unchanged for most of the other composite economic indicators. Our position for economic change (long-term increase in employees) and industrial structure (proportion of people in knowledge-based employment) has fallen within the region and nationally, however, the district remains in the top 60% of areas. Resident salaries remain high - above the median for Great Britain and Suffolk.

Levels of self-employment remain high, and average business size has decreased, which may be the result of the recession. Youth unemployment is low. Although the proportion of people claiming Job Seekers Allowance has increased in the district, it is below regional and national rates, and the percentage of those out of work for more than a year continues to fall.

Society – “where people want to live”, and “where people care for others”. Performance against most indicators remains unchanged. The number of residents in knowledge work remains low, although we have improved compared with national levels. However, inequality is an issue when compared to the rest of Suffolk. Levels of prosperity are relatively high, while deprivation is relatively low. Suffolk Coastal is in the top performing 20% of districts locally, regionally and nationally for good health and low crime.

Environment – “where people care for the environment”. Suffolk Coastal’s performance has not changed in comparison to other districts for the main environment indicators. Although housing affordability has improved compared to the region, the number of affordable homes being completed is affected by the recession. Access to services improved in 2008, although connectivity and other access issues remain of concern. Energy consumption and CO2 emissions continue to fall. The amount of waste collected continues to decrease, while the proportion of waste diverted from landfill is approaching 50% and is well above the regional and national averages.

Report card

In the preparation of Suffolk Coastal 2021, opportunities and challenges were considered in the economic, social and environmental context.

The report card below summarises the contents of the full report by showing how Suffolk Coastal district is performing in key areas compared to districts in other areas. Each “grade” contains 20% of districts within that area.

	Suffolk		East of England		National	
	Trend	Score	Trend	Score	Trend	Score
Economy						
Economic Scale	▲	A	▶	C	▶	C
Productivity	▶	A	▶	C	▶	C
Economic Change	▶	A	▶	C	▼	C
Industrial Structure	▶	A	▼	C	▼	B
Business & Enterprise	▶	C	▶	D	▶	D
Skills & Qualifications	▲	A	▲	A	▲	A
Labour Market	▶	D	▲	B	▶	B
Society						
Knowledge Workers	▶	D	▶	E	▲	D
Prosperity	▶	A	▶	C	▶	B
Deprivation	▶	B	▶	B	▶	B
Inequality	▶	D	▶	B	▶	B
Health	▶	A	▶	A	▶	A
Crime	▶	A	▶	A	▶	A
Environment						
Housing Affordability	▶	C	▲	B	▶	C
Floorspace Change	▶	D	▶	D	▶	D
Connectivity	▶	E	▶	E	▶	E
Services	▶	E	▶	D	▶	D
Amenities	▶	A	▶	C	▶	D
Natural Environment	▶	A	▶	A	▶	A

Local Futures, January 2010

Place Survey 2008/09

The Place Survey was carried out in autumn 2008, replacing the Best Value User Satisfaction Survey. The survey was sent to 4,000 households in Suffolk Coastal. We achieved the highest response rate in Suffolk: 44%. The next survey is scheduled to be carried out in autumn 2010.

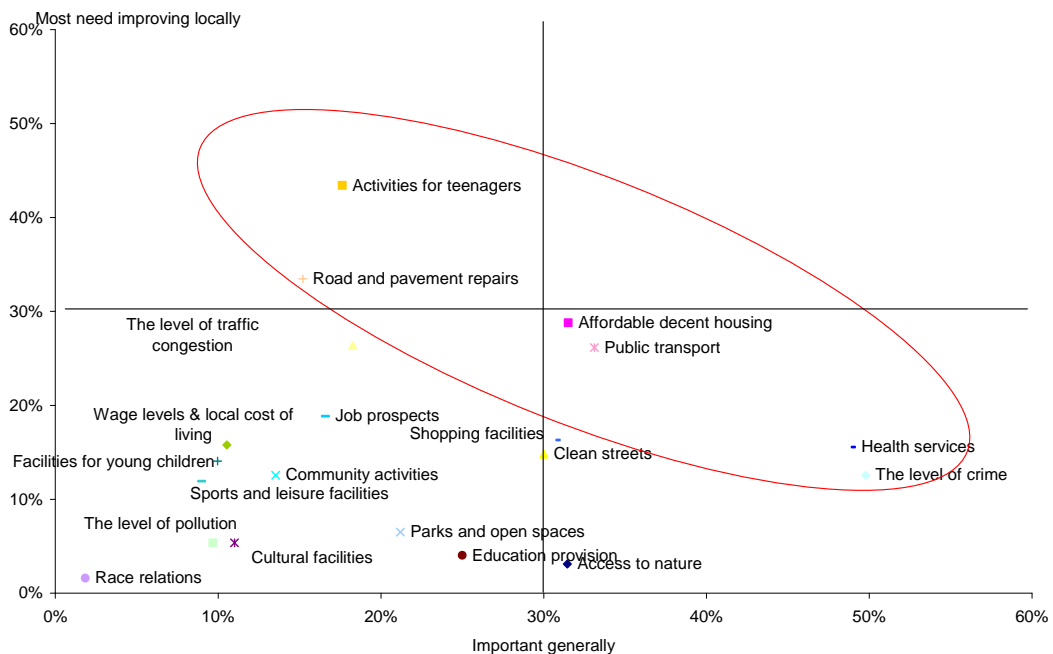
The Place Survey is intended to help councils and their partners to understand the views of local people. It asks respondents about their views on the area. It also provides a set of national indicators which will be common to all areas.

The following scatter chart helps to establish priorities for local areas. It plots the extent to which people think aspects of life in their area need to be improved (on the vertical axis) against the extent to which they think the same things are important generally (horizontal axis). The further to the top and right of the chart an aspect is, the more it is seen to be in need of improvement and to be important. If something is found at the top of the chart, but over to the left, then it is seen as in need of improvement locally, but not that important generally.

Affordable decent housing comes closest to being the key priority for improvement in Suffolk Coastal, as it is perceived as important generally **and** as needing improving locally. However, it is seen as less important (for improvement and generally) now than in 2006/07. Public transport is also quite important in general, and locally.

The second group of priorities includes activities for teenagers, identified as in most need of improvement locally but not as important to residents in general. Road and pavement repairs are the second issue most in need of improvement locally, but are not considered as important in making a good place to live.

Health services and level of crime are the two most important aspects for quality of life according to Suffolk Coastal residents. However, they are not perceived as in great need of improvement.



Quality of Life indicators

Trend	Indicator	Suffolk Coastal				Eastern				National			
		2009-10	2008-09	2007-08	2006-07	2009-10	2008-09	2007-08	2006-07	2009-10	2008-09	2007-08	2006-07
Where people want to invest													
▲	Percentage working age population in employment	(80.9)	80.2	75.6	77.9	(77.0)	77.3	77.9	76.8	(73.3)	73.9	74.5	74.3
▶	Count of active enterprises		5,310	5,340	5,140		236,355	232,185	225,140		2,265,740	2,222,555	2,151,845
▼	four year survival rate of enterprises		55.9%	62.1%			56.1%	56.9%			54.7%	54.3%	
Where people want to live													
▼	Domestic burglaries per 1,000 households		2.6	4.5	4.1		9.6	9.5	9.1		12.5	12.8	13.4
▼	Violent offences committed per 1,000 population		7.8	9.4	9.80		12.2	13.15	14.63		16.0	17.6	19.28
▼	Theft of a vehicle per 1,000 population		0.7	0.79	1.09		21.08	2.55	2.81		2.72	3.16	3.61
▶	Sexual offences per 1,000 population		0.6	0.6	0.8		0.8	0.8	0.9		0.9	1.0	1.1
▲	Job Seekers Allowance claimants as a percentage of resident working age population	2.0	0.9	1.1	1.1	3.3	1.6	1.7	1.8	3.9	2.1	2.2	2.4
▼	Percentage of those that have been out of work for more than a year	5.1	7.0	11.9	9.4	7.0	11.8	16.1	14.0	8.2	12.4	16.9	15.2
▲	Infant mortality			5.4	1.8			4.3	4.1			4.8	5.00
▲	Life expectancy at birth (m)		80.6	80.3	79.8		78.9	78.7	78.3		77.9	77.7	77.3
▲	Life expectancy at birth (f)		83.8	83.4	82.9		82.8	82.6	82.3		82.0	81.8	81.6
▲	House price to income ratio		7.78	7.31	6.97		7.78	7.88	7.43		6.94	7.26	6.91
▲	Index of multiple deprivation	Due 2010			274	Due 2010			n/a	Due 2010			n/a
▼	Median total gross annual earnings (£, resident)	22,068	24,002	20,342	19,746	22,522	21,846	20,850	20,274	21,455	20,913	20,118	19,500
Where people care for others													
▼	Teenage pregnancy conceptions under 18 per 1000 females 15-17			22.1	24.60			33.10	33.3			41.9	40.9
▲	Percentage working age population claiming key benefits	7.5	6.3	6.5	6.7	10.4	8.7	8.8	8.9	13.3	11.6	11.9	12.3

State of the District Report 2010: Suffolk Coastal

Trend	Indicator	Suffolk Coastal				Eastern				National			
		2009-10	2008-09	2007-08	2006-07	2009-10	2008-09	2007-08	2006-07	2009-10	2008-09	2007-08	2006-07
Where people care for others													
▲	Percentage working age population with NVQ level 3 or above	49.5	43.3	42.9		43.4	43.4	41.8		47.0	46.4	45.5	
Where people care for the environment													
▼	Average annual domestic consumption gas and electricity (kWh)	21,234	22,269	23,003		21,284	22,277	22,905		21,105	22,006	22,698	
▼	Volume of household waste collected per head (kg)		434.4	461.6		521		523			(433)	511	
▲	Percentage diverted from landfill (reused, composted or recycled)	48.49	42.94	38.31		41.69	38.13	38.27		39.04	36.36	30.94	
▼	Total CO2 emissions (kt)		819	848			44,106	44,962			513,216	522,212	
▼	CO2 emissions per capita (k/tonnes)		6.6	6.9			7.8	8.0			8.4	8.6	

Source: various, updated January 2010.

Trend arrows show direction only – the underlying colour indicates improvement (green), no significant change (orange) or worsening performance (red).

Introduction

Purpose

The State of the District report shows our district's distinctive identity, to inform the Local Strategic Partnership when they consider what that identity should look like in future. The Local Strategic Partnership and individual partners can then plan and prioritise work to achieve that change, in accordance with Suffolk Coastal 2021.

In 2010, the State of the District report has been revised to include quality of life indicators, and is being published in January, so that the information can be used to plan projects in the next financial year.

History

The State of the District report was first compiled in April 2008 (then called Place-shaping for Suffolk Coastal Local Strategic Partnership: A District Profile) to support the decision-making process for Suffolk Coastal 2021. It compared Suffolk Coastal District with other districts in Suffolk, and the rest of England, as well as identifying hotspots within the District.

An updated report was produced in April 2009 for the LSP to review progress and consider wider changes.

Data

As with previous versions of the State of the District report, this report uses the most up to date information available from Local Futures (as at January 2010). Local Futures data comes from a range of resources, mainly official government statistics. The date is shown for all information as some figures are not available for the latest year, but may help to identify trends.

The 2010 report also includes:

- Quality of life indicators. These were previously reported separately. They have been revised as some statistics are no longer available and are incorporated within the report, and
- Information from the 2008 Place Survey (a survey of residents which is carried out every 2 years).

Each topic (economy, society and environment) begins with a profile chart (looking like a spider's web) that shows how Suffolk Coastal District compares with other districts (i.e. other lower level local authority areas). This profile application converts all results to a percentile which is a scale of between 0 and 100. This allows data that originally used different scales to be compared. The national average is always 50. Results above 50 (i.e. on the outside of the profile) are above the national median and those towards the centre of the profile (i.e. below 50) are below.

In profile charts some indicators are good if they have a high value (such as mean earnings), some are better with a low value (claimants of incapacity benefits, mortality rates, crime). Where possible, notes for each chart will indicate which indicators should be high or low.

Thematic maps compare different areas. The palest colours have the lowest figures: the darker the colour, the higher the results.

Further information

For more information, please contact the Policy & Performance Team at Suffolk Coastal District Council (01394 444435, performance@suffolkcoastal.gov.uk).

Economy

Overview

Vision

The Local Strategic Partnership (LSP) vision for the economy includes: “in 2021 we have developed a strong and diverse economy where young people and adults have the opportunity to work, earn, and improve their life chances.”

Summary

The overall picture for economic performance in Suffolk Coastal remains the same as in previous years. Within Suffolk, the district performs well – except for Business & Enterprise and the Labour Market. At a regional and national level, Suffolk Coastal is now one of the best performing districts on Skills & Qualifications, but ranks low for Business and Enterprise.

Levels of skills and qualifications, which were raised as a concern in the Audit Commission’s Area Assessment of Suffolk, have improved for Suffolk Coastal in comparison at a local and national level.

Economy: Quality of life indicators

Building on the best of the present, Suffolk Coastal is a district where people want to live and to invest, to care for others and the environment.

Trend	Indicator	Suffolk Coastal				Eastern				National			
		2009-10	2008-09	2007-08	2006-07	2009-10	2008-09	2007-08	2006-07	2009-10	2008-09	2007-08	2006-07
Where people want to invest													
▲	Percentage of working age population in employment	(80.9)	80.2	75.6	77.9	(77.0)	77.3	77.9	76.8	(73.3)	73.9	74.5	74.3
▶	Count of active enterprises**		5,310	5,340	5,140		236,355	232,185	225,140		2,265,740	2,222,555	2,151,845
▼	four year survival rate of enterprises		55.9%	62.1%			56.1%	56.9%			54.7%	54.3%	

Source: various, updated January 2010.

Trend arrows show direction only – the underlying colour indicates improvement (green), no significant change (orange) or worsening performance (red).

Overall performance

Median workplace based gross weekly earnings remain higher than expected for a coastal, rural location. However, median earnings for residents fell from 2008 to 2009.

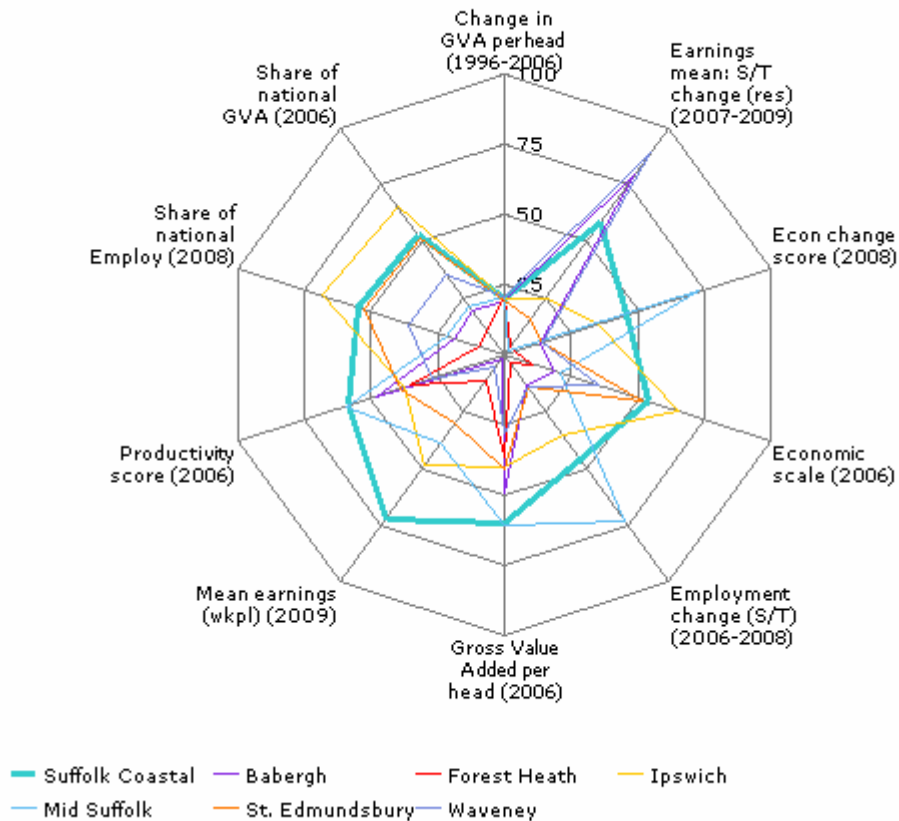
Gross Value Added (GVA) reflects the size of the local economy. The GVA figures are four years old and do not reflect the current economic climate, however they are useful for bench-marking and monitoring trends.

GVA is an issue for the whole of Suffolk (change in GVA per head is at the same low level for all the Suffolk districts). Share of GVA has improved for Suffolk Coastal since the last report, and now registers above the national median. Gross Value Added per head has also improved.

The three best performing districts in Suffolk for economic scale are Suffolk Coastal (Mean earnings (workplace), productivity, Gross Value Added), Mid Suffolk (employment change, economic change and change in earnings) and Ipswich (economic scale, share of GVA and share of national employment). Ipswich may be expected to outperform other Suffolk districts on those indicators, because they reflect its size and status as the largest town in Suffolk. However, Mid Suffolk is outperforming Suffolk Coastal on indicators for change. This may show that Suffolk Coastal is developing at a slower rate.

Suffolk Coastal now performs below the national median for employment change (i.e. the percentage increase in jobs in the district) and the related economic change score.

The size of Suffolk Coastal's economy has increased compared to the rest of Suffolk – equal in size to St Edmundsbury and second only to Ipswich. Suffolk Coastal is performing better than expected for rural areas - most areas with larger economies are urban.



Note: The chart displays the national ranking converted to a percentile score (The national average is always 50. Results above 50 (i.e. on the outside of the profile) are above the national median and those towards the centre are below the national median).

For this profile, it is better to score highly on each indicator (i.e. have a shape towards the outer edges).

Indicators

Economic change: This score provides an index of the percentage long term change in the total number of employees (by workplace) in relation to the national average.

Economic scale: Economic Scale indicates the size of an area's economy. It is created by weighting the areas GVA (Gross Value Added) by the area's employment. These two indicators are then indexed to the Great Britain average.

GVA: The level of Gross Value Added (which can provide an indication of the level of productivity) generated. Gross Value Added indicates the economic activity within a region by measuring the production of goods and services.

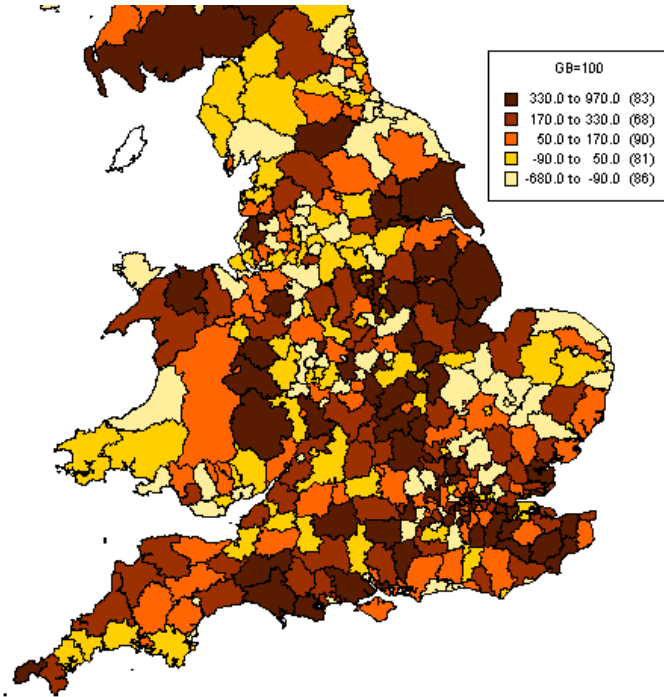
Productivity score: The productive capacity of an area. It is generated from average gross weekly earnings and GVA per head. Both these indicators are indexed to the GB value, and then summed and averaged.

Earnings, mean: In ONS published reports, the standard practise for presenting earnings estimates is to use the figure for full-time workers rather than the total workers figure, and to use median earnings rather than the mean (the chart above uses total workers and the mean). The median is the value below which 50% of

employees fall. It is preferred over the mean for earnings data as it is influenced less by extreme values and because of the skewed distribution of earnings data.

Economic change (2008)

This score provides an index of the percentage long term change in the total number of employees (by workplace) in relation to the national average (100).

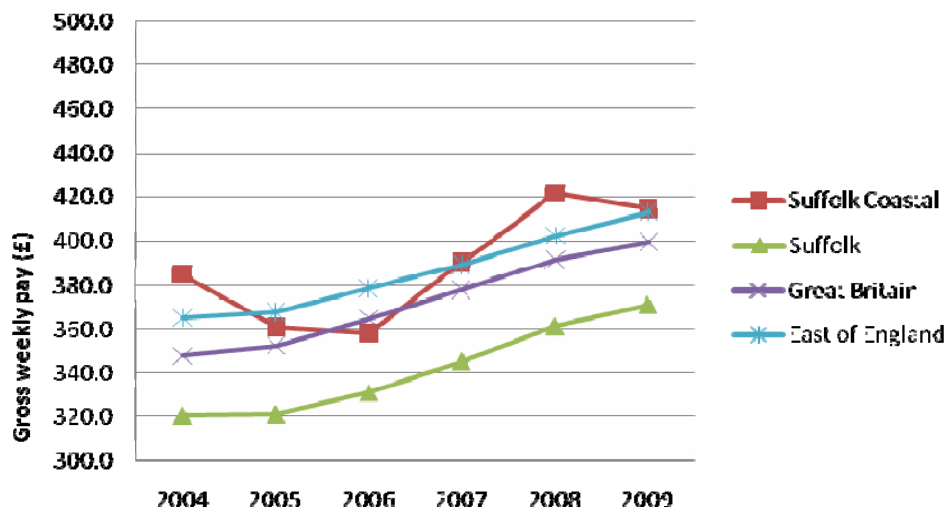


Source: Local Knowledge; Annual Business Inquiry

Earnings

Gross total median earnings in the district (i.e. part time as well as full time workers) are significantly above average for Suffolk and for Great Britain.

Gross weekly pay (median) - all residents



Source: Annual survey of hours and earnings, ONS via nomis. Reproduced under the click use licence.

Median weekly earnings for full-time workers

	Great Britain		East		Suffolk		Suffolk Coastal	
	workplace	resident	workplace	resident	workplace	resident	workplace	resident
2007	£458.60	£460.00	£450.00	£479.90	£419.20	£428.60	£498.30	£492.40
2008	£479.10	£480.00	£375.40	£499.00	£356.59	£450.8	£427.30	£531.20
2009	£490.20	£491.00	£479.10	£509.40	£440.30	£453.50	£507.60	£494.20

Source: Annual Survey of Hours and Earnings

In 2008, workplace earnings declined in the East (region, county and district). However, they recovered in 2009.

Suffolk Coastal is unusual as workplace earnings are higher than resident earnings. Causes may include:

- employers such as BT are located near the edge of the district and employees may commute from other areas,
- poor transport links from Suffolk Coastal may mean residents are less likely to be commuting long distances to centres of employment (e.g. into London or Cambridge),
- residents may lack the skills and qualifications required by local businesses,
- possible lack of appropriate affordable housing or suitable transport, or
- people commuting from Suffolk Coastal may be in low-paid jobs.

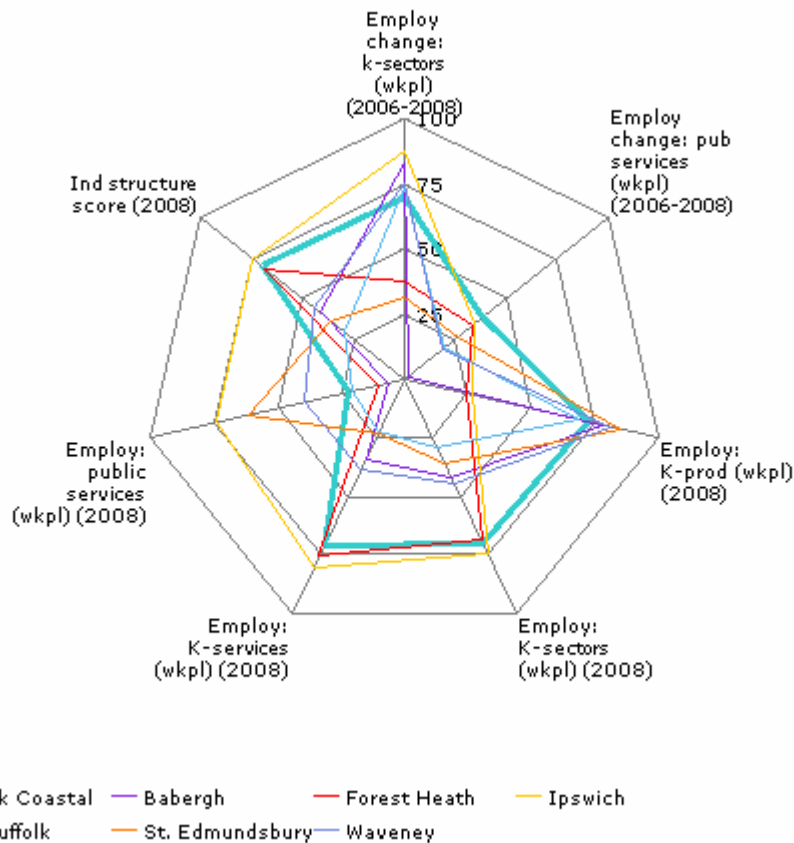
Industrial structure

Summary

Suffolk Coastal remains in the top 20% of Suffolk districts for industrial structure overall. Ipswich, St Edmundsbury and Babergh outperform the District on some indicators. Suffolk Coastal's performance remains average for the Eastern region.

Suffolk Coastal continues to have good levels of employment in businesses that are in knowledge-related sectors. It also has good employment growth in these sectors – which should help the local economy as the UK economy becomes more focused on high value-added sectors. Employment change has been strong for knowledge-sector businesses in 2008, better than in the previous two years. Areas with the highest proportion of knowledge sector employment are scattered. This may be because there is relatively low employment in each area, and so knowledge sectors are more visible (for example, Sizewell power station is the largest employer in that area). It may also be caused by large numbers of small and micro- businesses in the sector. The area of low-scoring wards in south Felixstowe is probably because the Port of Felixstowe is the major employer in the area.

As with the 2007 profile, the map shows that Suffolk Coastal's performance on industrial structure are against the trend for coastal and sparsely populated areas.



Note: The chart displays the national ranking converted to a percentile score (The national average is always 50. Results above 50 (i.e. on the outside of the profile) are above the national median and those towards the centre are below the national median).

For this profile, it is better to score highly (i.e. be towards the outer edges) on:

- Employment in k (knowledge) services, sectors and production
- Employment change in k (knowledge) sectors

Indicators

Industrial structure score: this workplace based figure provides an index of the proportion of all employed persons working in the following "Knowledge-driven" sectors: Aerospace (35.3), Electric machinery and optical equipment (30, 32, 33), Printing, publishing, recorded media (22.11-22.22), Chemicals (24), Energy (11, 23, 40, 41), Telecoms, computer & related services, R&D (72, 73, 64.2, 64.12), Finance, business services (65, 67, 74 (excluding 74.7, 74.82)), Air transport services (62), & Recreational & cultural services (92).

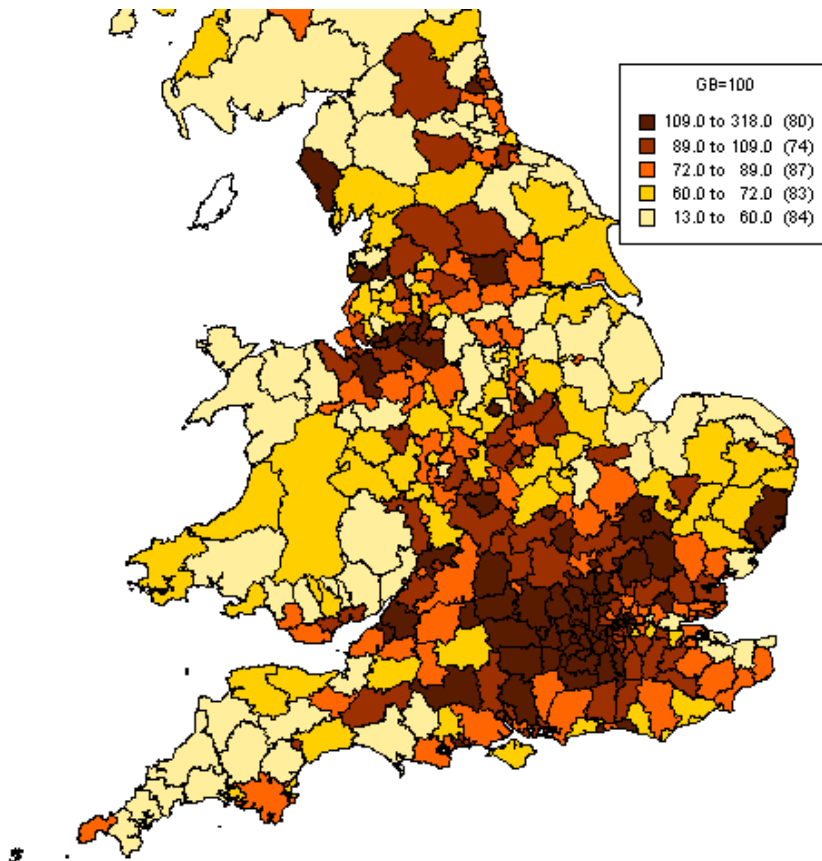
Knowledge-driven services sectors: Telecoms, computer & related services, R&D (72, 73, 64.2, 64.12), Finance, business services (65, 67, 74 (excluding 74.7, 74.82)), Air transport services (62), & Recreational & cultural services (92).

Knowledge-driven production sectors: Aerospace (35.3), Electric machinery and optical equipment (30, 32, 33), Printing, publishing, recorded media (22.11-22.22), Chemicals (24), Energy (11, 23, 40, 41).

The "Public services" sector is: Public admin/defence (75); Education (80); Health and social work (85).

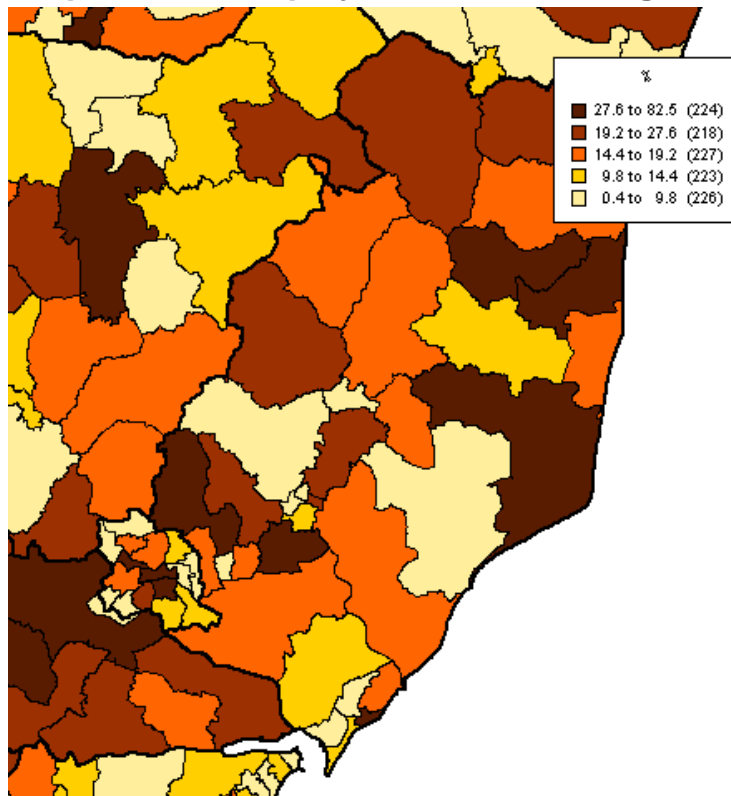
Industrial structure score (2008)

An index of the proportion of people working in businesses in "knowledge-driven" sectors. It is workplace based. The GB average is 100.



Source: Local Knowledge; Annual Business Inquiry

Proportion of employment in Knowledge-driven sectors (2008)



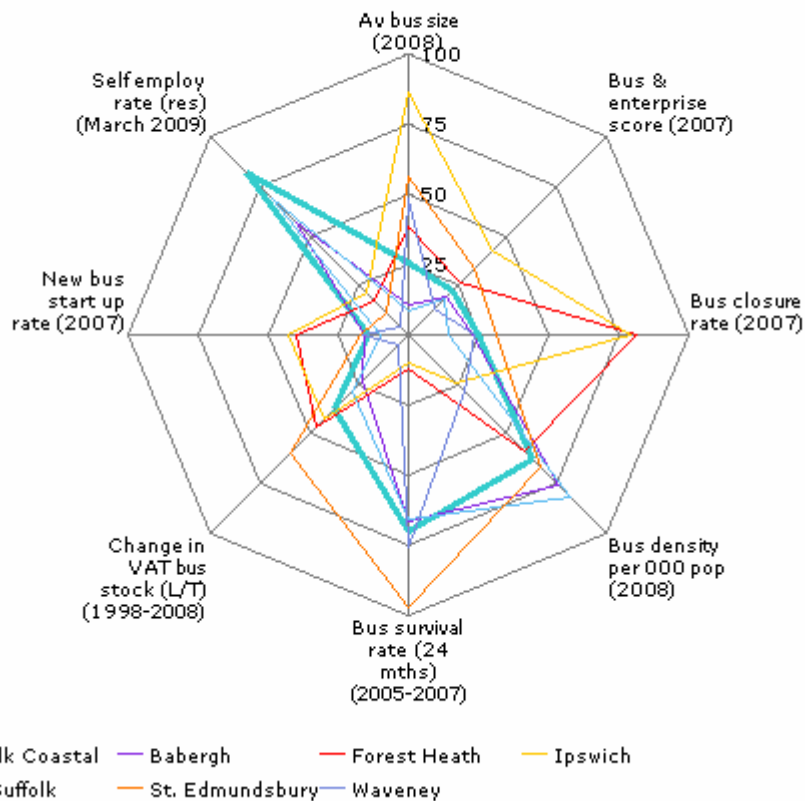
Source: Local Knowledge; Annual Business Inquiry

Businesses

Summary

The 2007 District Profile noted that Suffolk Coastal had a very high self employment rate for residents, mirrored by below average business size. The spider chart below shows that the self employment rate remains the highest in Suffolk and in the top quartile nationally. Average business size has decreased. These changes, which reverse 2008's results, may be caused by the recession.

The business start-up rate remained very low in 2007, which affects Suffolk Coastal's overall business and enterprise score (as does the fall in performance against change in VAT business stock). However the other part of this composite indicator, survival rates, increased in 2007. The business and enterprise score, is slightly higher than expected for rural Norfolk and Suffolk, while the new business formation rate continues to be broadly in line with areas away from central England and cities (see maps below).



Note: The chart displays the national ranking converted to a percentile score (The national average is always 50. Results above 50 (i.e. on the outside of the profile) are above the national median and those towards the centre are below the national median).

For this profile, it is better to score highly (i.e. be towards the outer edges) on:

- Changes in VAT business stock
- New business formation rate
- Business and enterprise score

It is better to score low (i.e. be towards the centre) on:

- Business closure rate

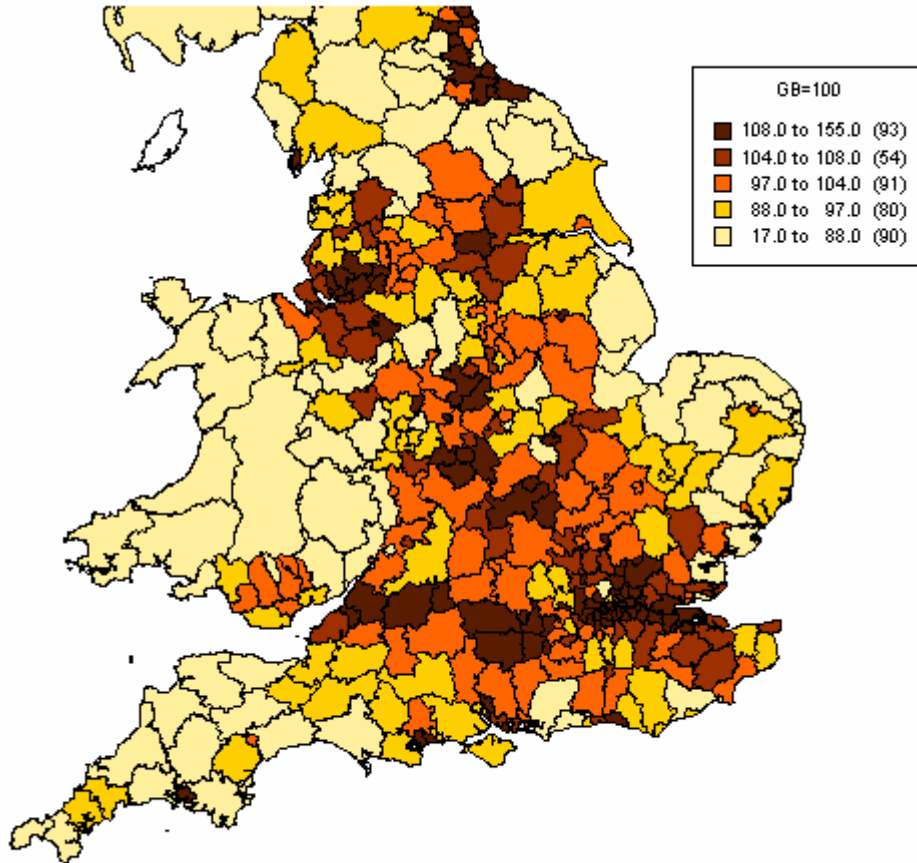
Indicators

Business & enterprise score: an indicator of the enterprise of businesses within the locality. The higher the score, the more business enterprise in an area. Business enterprise takes into consideration an areas business formation rate, the change of in VAT registered business stock, and new business survival rates. Each one of these 3 indicators was indexed to the GB value (business formation rates and new business survival rates were treble weighted), and then all 3 indices were summed and averaged.

Business closure rate: The percentage of businesses that have deregistered for VAT within the last year. This data is derived from annual workplace estimates based on the Inter Departmental Business Register (IDBR).

New business survival rate (24 months from 2003): The proportion of businesses still registered for VAT 24 months after their initial registration. This is based on registrations and deregistrations of VAT-based enterprises, and is calculated from data collected from the Inter-Departmental Business Register (IDBR).

Business and enterprise score (2007)



Source: Local Knowledge; Business start-ups and closures: VAT registrations and deregistrations

Business size

The percentage of businesses with less than 5 employees has grown from 70% with 5 employees or less in 2006 to 76% with 4 or less in 2007.

Enterprises by number of employees (2007)			
Geography	20+ employees (%)	5-19 employees (%)	<4 employees (%)
Babergh	4.23	17.89	77.89
Forest Heath	5.71	21.82	72.47
Ipswich	7.82	22.63	69.55
Mid Suffolk	4.31	16.29	79.41
St. Edmundsbury	6.30	19.94	73.76
Suffolk Coastal	4.51	19.30	76.19
Waveney	5.12	21.82	73.06

Source: Local Futures

Business change (percentage)

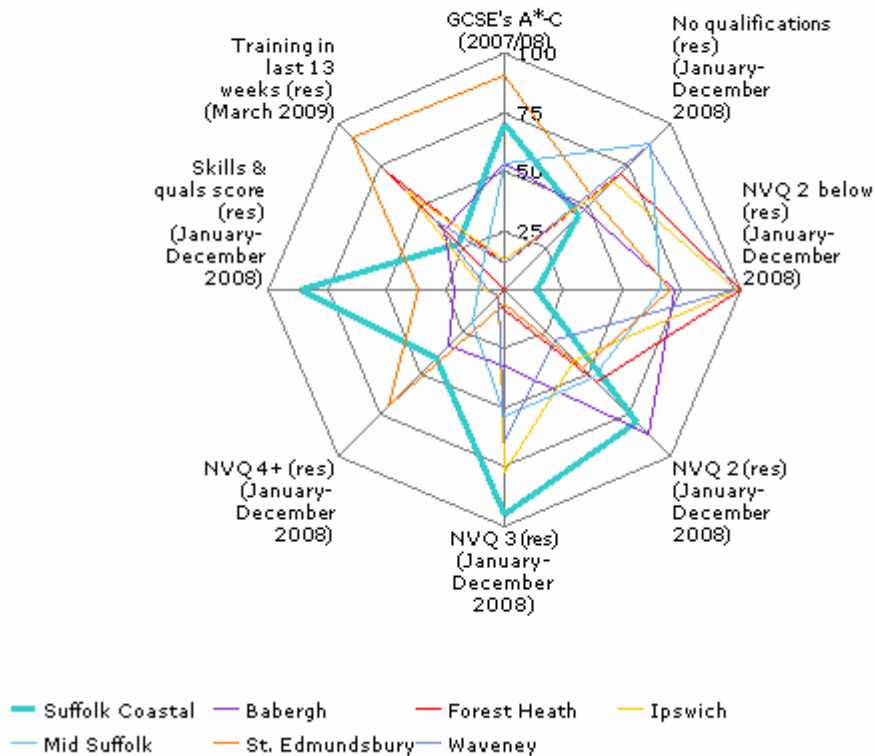
Figures are for the change between 1998 to 2008, except knowledge which is 2006-08 and tourism which is 1998-2005.

	Knowledge	Agriculture	Construction	Education	Financial	Hotels	Manufacturing	Mining	Public service	Real estate	Transport	Retail	tourism
Babergh	-1.8	- 4.26	- 16.7	37.5		24.3			6.67	48.2	9.38	-0.7	12.3
Forest Heath	-2.3	- 6.38	- 28.1	100	33.3	61.1	8.11		18.2	45.9	5.26	1.41	10.3
Ipswich	1.44	- 28.6	- 21.7	11.1		72.2	- 14.6		15.2	43.8	11.4	-4.7	25.4
Mid Suffolk	3.11	- 4.85	- 21	22.2	50	18.8	1.49	-50	8.93	59.2	2.33	3.57	16.5
St. Edmundsbury	2.03	- 3.66	- 28.3	20	16.7	51.4	2.56		16	61.6	23.1	5.59	28.4
Suffolk Coastal	0.74	- 3.36	- 22.8	16.7		27.3	3.45		11.8	43.9	16.2	2.55	14.8
Waveney	0.48	- 15.9	- 21.7		50	23.5	- 11.7	100	- 4.88	29.2	12	-1.4	16.7

Source: Local Futures

Skills & qualifications

Skills and qualifications were flagged as an issue in the recent Area Assessment for Suffolk. Performance has improved, although the number that have received training recently remains below average. Low levels of NVQ level 2 or below may be balanced by higher than average numbers with level 4 or above. 55.2% of pupils achieved 5 GCSE's at A*-C (incl. Eng/Maths) in 2007/08. This is above the regional figure (50.2%).



Note: The chart displays the national ranking converted to a percentile score (The national average is always 50. Results above 50 (i.e. on the outside of the profile) are above the national median and those towards the centre are below the national median).

For this profile, it is better to score highly on each indicator (i.e. have a shape towards the outer edges), except for “no qualifications”.

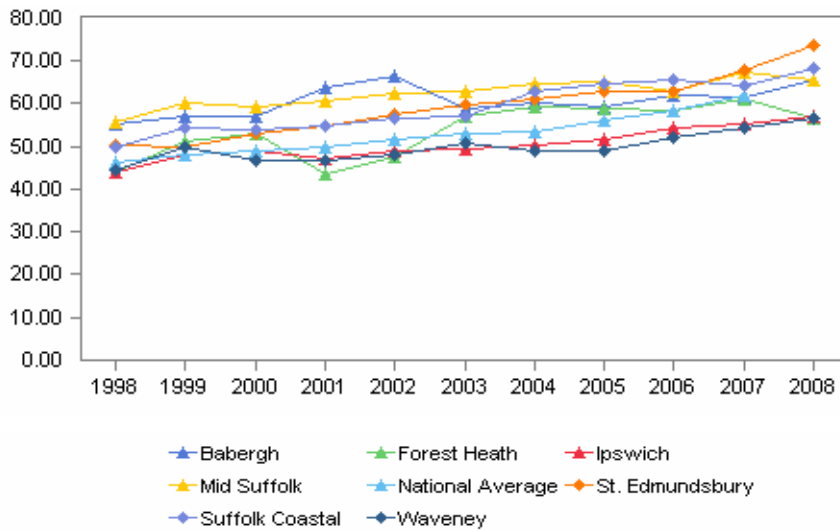
Indicators

Skills & qualifications score (residents or workplace): composite presenting an index of the qualifications of an area’s workforce, relative to the GB value. A higher score indicates a high level of local area qualifications amongst the labour market. Skills and qualifications scores are generated from summing the weighted percentages of an area’s workforce qualified below NVQ2, at NVQ2, NVQ3 and NVQ4 and above, with each indicator indexed to the GB value. The sum of these indices is then divided by 4 to gain an overall composite.

Proportion of students gaining 5+ GCSEs (A*-C)

55.2% of pupils achieved 5 GCSE's at A*-C (incl. Eng/Maths) in 2007/08. This is above the regional figure (50.2%).

State of the District Report 2010: Suffolk Coastal



Source: Local Knowledge, GCSE and Equivalent Results and Associated Contextual Value Added Measures for Young People by Gender in England (Referenced by Location of Educational Institution)

Table of results

	Babergh	Forest Heath	Ipswich	Mid Suffolk	St. Edmundsbury	Suffolk Coastal	Waveney	National Average
1998	55.30	44.10	43.90	55.80	50.40	50.00	44.60	46.30
1999	57.20	51.10	47.90	60.30	49.90	54.50	50.00	47.90
2000	57.30	53.10	49.00	59.50	53.00	53.90	46.90	49.20
2001	63.70	43.60	47.20	60.60	54.80	54.90	46.60	50.00
2002	66.60	47.70	48.80	62.50	57.50	56.50	48.10	51.50
2003	59.10	56.90	49.40	63.00	59.80	57.00	50.90	52.90
2004	60.10	59.20	50.20	64.70	61.20	62.90	49.00	53.70
2005	59.50	58.70	51.90	65.00	63.10	64.90	48.90	56.30
2006	62.10	58.30	54.40	62.80	62.90	65.40	52.10	58.50
2007	61.40	61.00	55.50	67.50	67.80	64.30	54.60	62.00
2008	65.6	56.8	57.1	65.6	73.9	68.5	56.8	65.3

Source: Local Knowledge; GCSE results (LAD level)

Notes: Reproduced under the terms of the Click-Use License. 2008 is the latest year available.

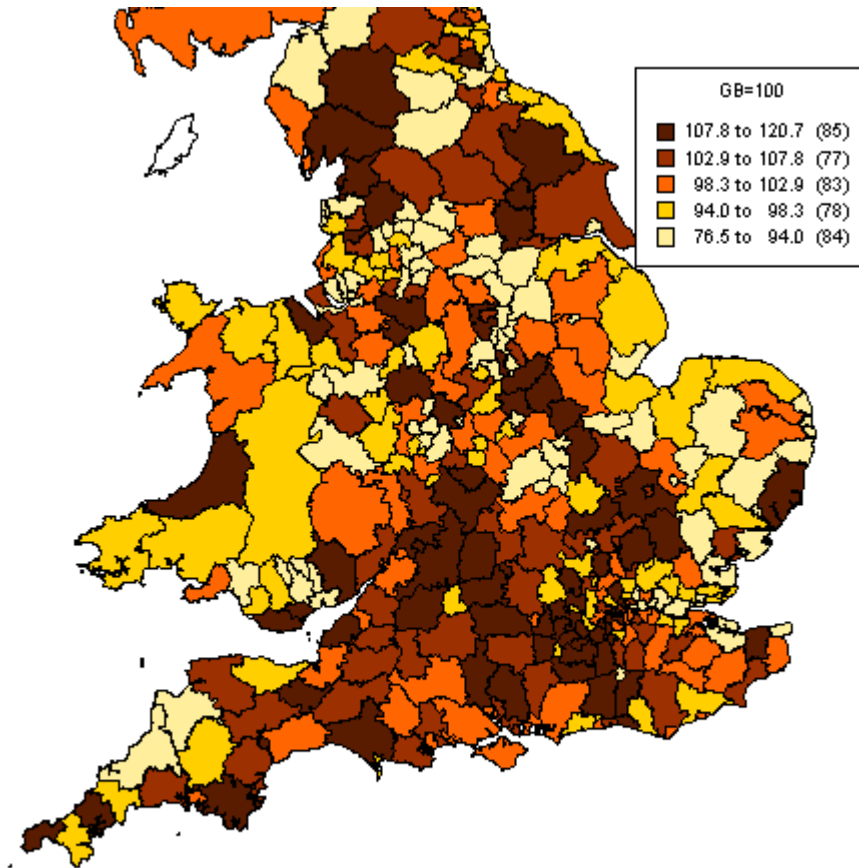
Skills and qualifications score

GB = 100

Geography	Residents (Jan – Dec 2008)	Workplace (2003-04)
Babergh	94.35	84.69
Forest Heath	76.6	80.33
Ipswich	88.85	94.25
Mid Suffolk	90.43	82.45
St. Edmundsbury	97.61	90.20
Suffolk Coastal	109.86	93.16
Waveney	87.49	92.46

Skills and qualifications score

GB=100 (residence based) (January - December 2008)



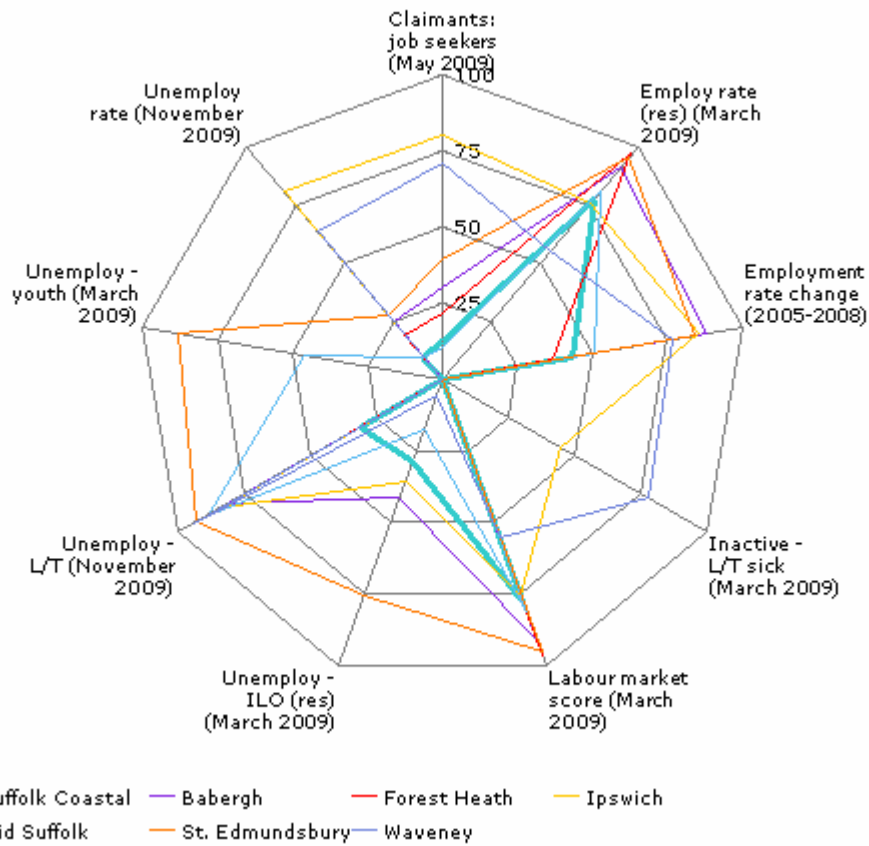
Source: Local Knowledge; Annual Population Survey

Labour market

Youth unemployment is very low in Suffolk Coastal, which may reflect the migration of young people out of the District, or an increase in training for young people.

Within the district, unemployment and employment rates are higher in towns. The employment rate and labour market score have improved compared to the rest of

Eastern England.



Note: The chart displays the national ranking converted to a percentile score (The national average is always 50. Results above 50 (i.e. on the outside of the profile) are above the national median and those towards the centre are below the national median).

For this profile, it is better to score highly (i.e. be towards the outer edges) on:

- Changes in employment rate
- Employment rate
- Labour market score

It is better to score low (i.e. be towards the centre) on:

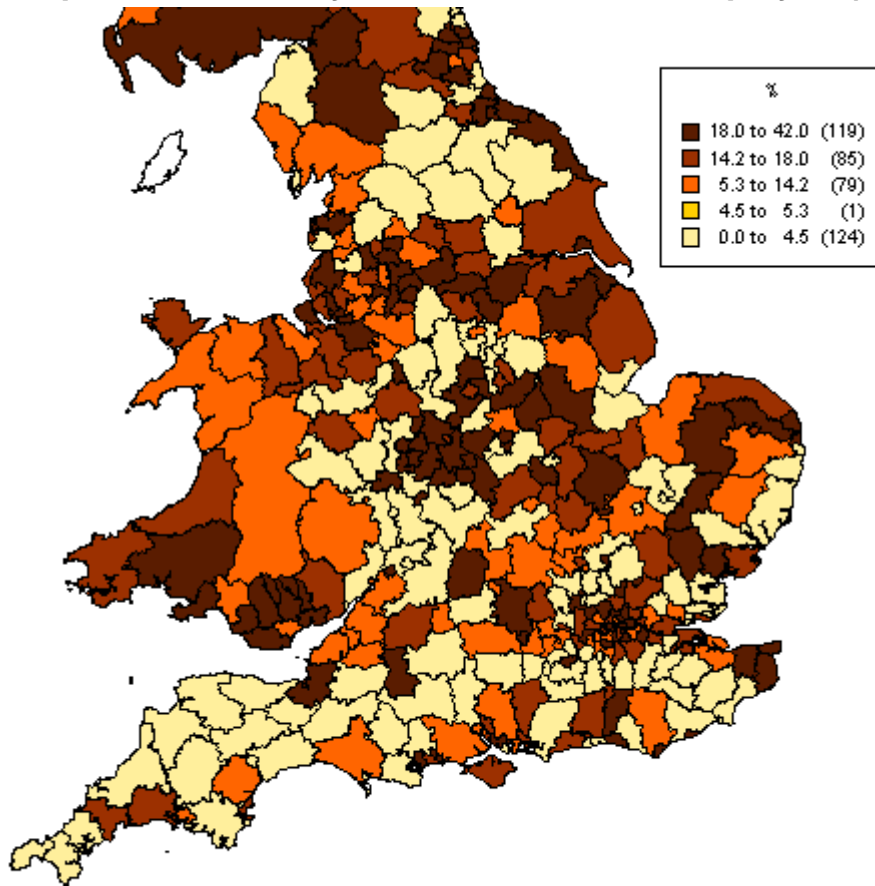
- Unemployment
- Inactive – long term sick

Indicators

Labour market score: This residence based indicator provides the proportion of people aged 16-59/64 (men/women) in employment indexed to the national average to provide a comparable figure in relation to the national trend.

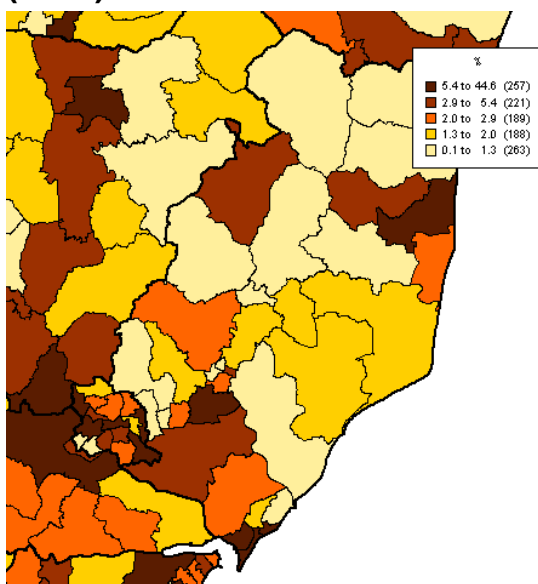
Unemployment rate: The proportion of people aged 16-59/64 (men/women) claiming Job Seekers Allowance or National Insurance Credits. The higher the score, the more unemployed in a given area. This data is residence based.

Proportion of 16-24 year olds who are unemployed (March 2009)



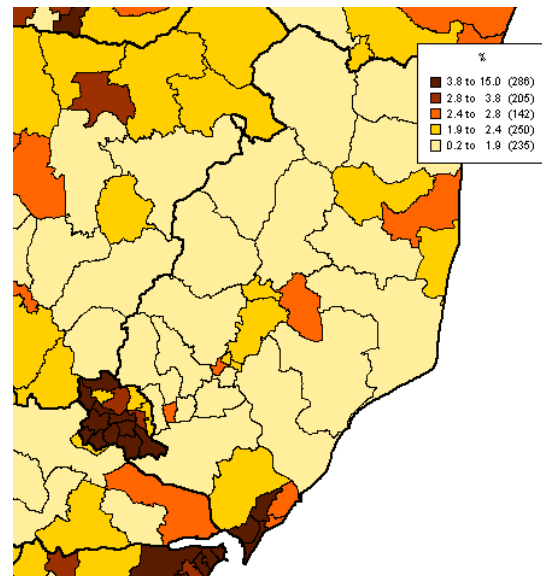
Source: Local Knowledge; Annual Population Survey

Share of District employment (2008)



Source: Local Knowledge; Annual Business Inquiry

Unemployment rate (November 2009)



Source: Local Knowledge; Claimant count with rates and proportions

Society Overview

Vision

The Local Strategic Partnership (LSP) vision for society includes:

- “communities are safe, cohesive and inclusive, and local people are enabled to respond to the identified needs of their area to ensure our communities are vibrant, balanced and sustainable”
- “everyone in the district has the opportunity to live a healthier lifestyle and living in a rural area is not a barrier to achieving that healthy lifestyle”
- “all of our young people are able to access the same level of support, activities and services, including education and training, regardless of where they live”

Summary

Suffolk Coastal is in the top performing 20% of districts locally, regionally and nationally for good health and low crime. However, the level of inequality is poor compared to the rest of Suffolk, and the numbers of residents in “knowledge work” are low by any comparison.

Society: Quality of life indicators

Building on the best of the present, Suffolk Coastal is a district where people want to live and to invest, to care for others and the environment.

Progress against this overarching Vision has been reviewed using the high-level Quality of Life indicators, which are grouped accordingly.

Trend	Indicator	Suffolk Coastal				Eastern				National			
		2009-10	2008-09	2007-08	2006-07	2009-10	2008-09	2007-08	2006-07	2009-10	2008-09	2007-08	2006-07
Where people want to live													
▼	Domestic burglaries per 1,000 households	2.6	4.5	4.1		9.6	9.5	9.1		12.5	12.8	13.4	
▼	Violent offences committed per 1,000 population	7.8	9.4	9.80		12.2	13.15	14.63		16.0	17.6	19.28	
▼	Theft of a vehicle per 1,000 population	0.7	0.79	1.09		21.08	2.55	2.81		2.72	3.16	3.61	
▶	Sexual offences per 1,000 population	0.6	0.6	0.8		0.8	0.8	0.9		0.9	1.0	1.1	
▲	Number of Job Seekers Allowance claimants as a percentage of the resident working age population	2.0	0.9	1.1	1.1	3.3	1.6	1.7	1.8	3.9	2.1	2.2	2.4
▼	Percentage of those that have been out of work for more than a year	5.1	7.0	11.9	9.4	7.0	11.8	16.1	14.0	8.2	12.4	16.9	15.2
▲	Infant mortality			5.4	1.8			4.3	4.1			4.8	5.00

State of the District Report 2010: Suffolk Coastal

	Suffolk Coastal				Eastern				National				
▲	Life expectancy at birth (m)	80.6	80.3	79.8	78.9	78.7	78.3	77.9	77.7	77.3			
▲	Life expectancy at birth (f)	83.8	83.4	82.9	82.8	82.6	82.3	82.0	81.8	81.6			
▲	House price to income ratio	7.78	7.31	6.97	7.78	7.88	7.43	6.94	7.26	6.91			
▲	Index of multiple deprivation	Due 2010		274	Due 2010		n/a	Due 2010		n/a			
▼	Median total gross annual earnings (£, resident)	22,068	24,002	20,342	19,746	22,522	21,846	20,850	20,274	21,455	20,913	20,118	19,500
Where people care for others													
▼	Teenage pregnancy conceptions under 18 per 1000 females 15-17		22.1	24.60		33.10	33.3		41.9	40.9			
▲	Percentage of the working age population claiming key benefits	7.5	6.3	6.5	6.7	10.4	8.7	8.8	8.9	13.3	11.6	11.9	12.3
▲	Education: Percentage of working age population with NVQ level 3 or above	49.5	43.3	42.9		43.4	43.4	41.8		47.0	46.4	45.5	

Source: various, updated January 2010.

Trend arrows show direction only – the underlying colour indicates improvement (green), no significant change (orange) or worsening performance (red).

Health

The analysis of health data by ERPHO shows that Suffolk Coastal is performing well in comparison to other areas for most health indicators. However, the percentage of 5-16 year olds who spent at least two hours per week on sport is significantly worse than the England and regional average.

Health summary for Suffolk Coastal

The chart below shows how people's health in this local authority compares to the rest of England. The local result for each indicator is shown as a circle, against the range of results for England which is shown as a bar. A green circle may still indicate an important public health problem.

- Significantly worse than England average
- Not significantly different from England average
- Significantly better than England average
- No significance can be calculated

* relates to National Indicator Set 2009



Domain	Indicator	Local No. Per Year	Local Value	Eng Avg	Eng Worst	England Range	Eng Best
Our communities	1 Deprivation	0	0.0	19.9	89.2		0.0
	2 Children in poverty *	2535	11.4	22.4	66.5		6.0
	3 Statutory homelessness	33	0.6	2.8	8.9		0.0
	4 GCSE achieved (5A*-C Inc. Eng & Maths) *	664	55.4	48.3	26.5		75.3
	5 Violent crime *	1052	8.6	17.8	38.4		4.8
	6 Carbon emissions *	944	7.7	7.2	15.7		4.8
Children's and young people's health	7 Smoking in pregnancy	150	13.8	14.7	37.8		3.7
	8 Breast feeding initiation *	807	73.9	71.0	32.5		92.2
	9 Physically active children *	11172	84.8	90.0	77.5	●	100.0
	10 Obese children *	52	6.1	9.6	16.2		3.9
	11 Children's tooth decay (at age 5)	n/a	0.8	1.5	3.2		0.0
	12 Teenage pregnancy (under 18) *	59	22.1	41.2	79.1		15.0
Adults health and lifestyle	13 Adults who smoke *	n/a	19.8	24.1	40.9		13.7
	14 Binge drinking adults	n/a	14.4	18.0	28.9		9.7
	15 Healthy eating adults	n/a	31.8	26.3	15.8		45.8
	16 Physically active adults	n/a	14.1	10.8	4.4		17.1
	17 Obese adults	n/a	24.0	23.6	31.2		11.9
Disease and poor health	18 Over 65s 'not in good health'	3800	15.4	21.5	32.5		13.5
	19 Incapacity benefits for mental illness *	1080	15.3	27.7	59.4		8.7
	20 Hospital stays for alcohol related harm *	1962	1120.3	1472.5	2615.1		639.0
	21 Drug misuse	193	2.6	9.8	27.5		1.3
	22 People diagnosed with diabetes	4541	3.7	4.1	8.3		2.6
	23 New cases of tuberculosis	n/a	n/a	15.0	102.1		0.0
	24 Hip fracture in over-65s	154	442.0	479.8	699.8		219.0
Life expectancy and causes of death	25 Excess winter deaths	55	12.7	17.0	30.3		4.0
	26 Life expectancy - male *	n/a	80.3	77.7	73.2		83.7
	27 Life expectancy - female *	n/a	83.4	81.8	78.1		87.8
	28 Infant deaths	5	4.4	4.9	9.6		1.3
	29 Deaths from smoking	187	146.1	210.2	330.2		134.4
	30 Early deaths: heart disease & stroke *	90	56.2	79.1	130.5		39.6
	31 Early deaths: cancer *	151	95.0	115.5	184.3		75.7
	32 Road Injuries and deaths *	69	56.9	54.3	188.3		18.4

Notes (numbers in bold refer to the above indicators)

1 % of people in this area living in 20% most deprived areas of England 2007 2 % of children living in families receiving means-tested benefits 2007 3 Crude rate per 1,000 households 2007/08 4 % at Key Stage 4 2007/08 5 Recorded violence against the person crimes crude rate per 1,000 population 2007/08 6 Total end user CO2 emissions per capita (tonnes CO2 per resident) 2006 7 % of mothers smoking in pregnancy where status is known 2007/08 8 % of mothers initiating breast feeding where status is known 2007/08 9 % 5-16 year olds who spent at least 2 hours per week on high quality PE and school sport 2007/08 10 % of school children in reception year 2007/08 11 Average number of teeth per child age 5 which were actively decayed, filled or had been extracted 2005/06 12 Under-18 conception rate per 1,000 females (crude rate) 2005-2007 13 %. Modelled estimate from Health Survey for England 2003-2005 14 %. Modelled estimate from Health Survey for England 2003-2005 15 %. Modelled estimate from Health Survey for England 2003-2005 16 % aged 16+ 2007/08 17 %. Modelled estimate from Health Survey for England 2003-2005 18 % who self-assessed general health as 'not good' (directly age and sex standardised) 2001 19 Crude rate per 1,000 working age population 2007 20 Directly age and sex standardised rate per 100,000 population 2007/08 21 Crude rate per 1,000 population aged 15-64 2006/07 22 % of people on GP registers with a recorded diagnosis of diabetes 2007/08 23 Crude rate per 100,000 population 2004-2006 24 Directly age-standardised rate for emergency admission 2005/07 25 Ratio of excess winter deaths (observed winter deaths minus expected deaths based on non-winter deaths) to average non-winter deaths 1.08.04-31.07.07 26 At birth, 2005-2007 27 At birth, 2005-2007 28 Rate per 1,000 live births 2005-2007 29 Per 100,000 population age 35+, directly age standardised rate 2005-2007 30 Directly age standardised rate per 100,000 population under 75 2005-2007 31 Directly age standardised rate per 100,000 population under 75 2005-2007 32 Rate per 100,000 population 2005-2007

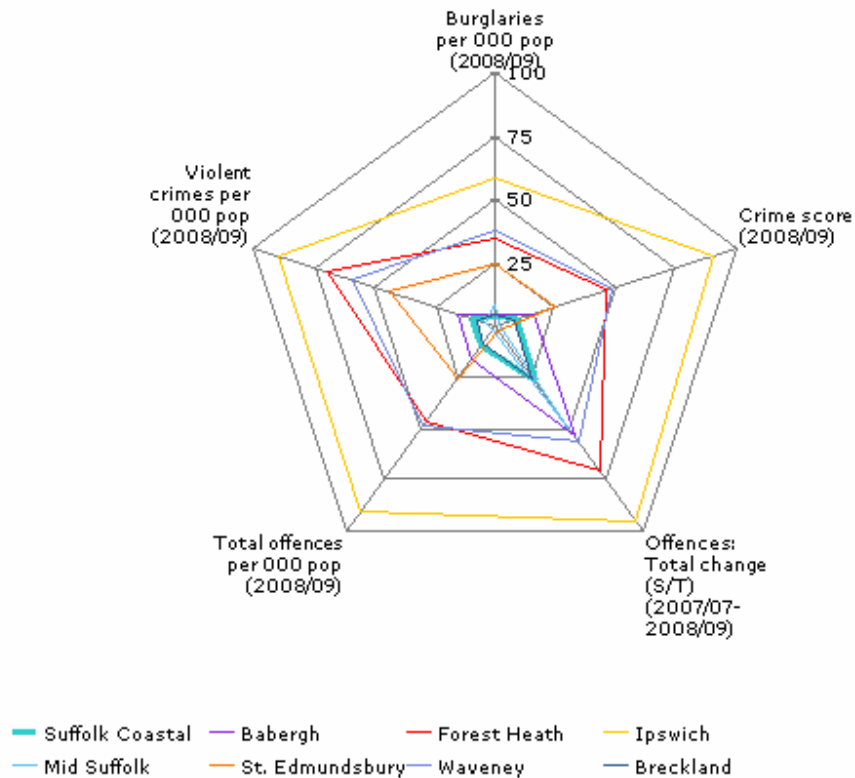
More information is available in The Indicator Guide: www.healthprofiles.info For information on your area contact your regional PHO: www.apho.org.uk

Source: Health Profile 2009, APHO and Department of Health

Crime

Crime rates

As last year, Suffolk Coastal is in the best 20% of districts in Suffolk, the Eastern region and nationally using these crime indicators.



Note: The chart displays the national ranking converted to a percentile score (The national average is always 50. Results above 50 (i.e. on the outside of the profile) are above the national median and those towards the centre are below the national median).

For this profile, it is better to score low on each indicator (i.e. have a shape towards the centre).

Crime score: This indicator provides an index of the total number of offences per 1,000 resident population. Total offences include theft from vehicles; dwelling burglary; robberies; sexual offences and violent offences. The index is to the GB average, providing a figure which is relative to the national trend.

Crime perception

The charts below are produced by Sparse (a partnership of local authorities classed as predominantly rural) based on Place Survey data.

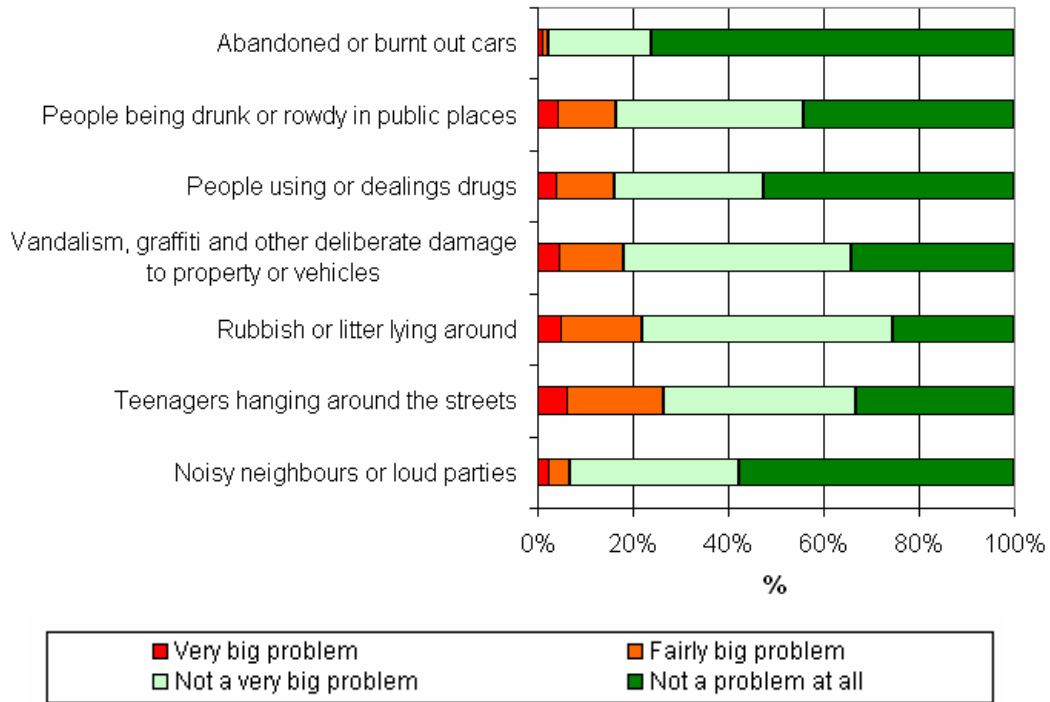
Anti-social behaviour

The perception of anti-social behaviour was raised as a concern in the Suffolk Coastal 2021. Suffolk Coastal residents perceived parents not taking responsibility

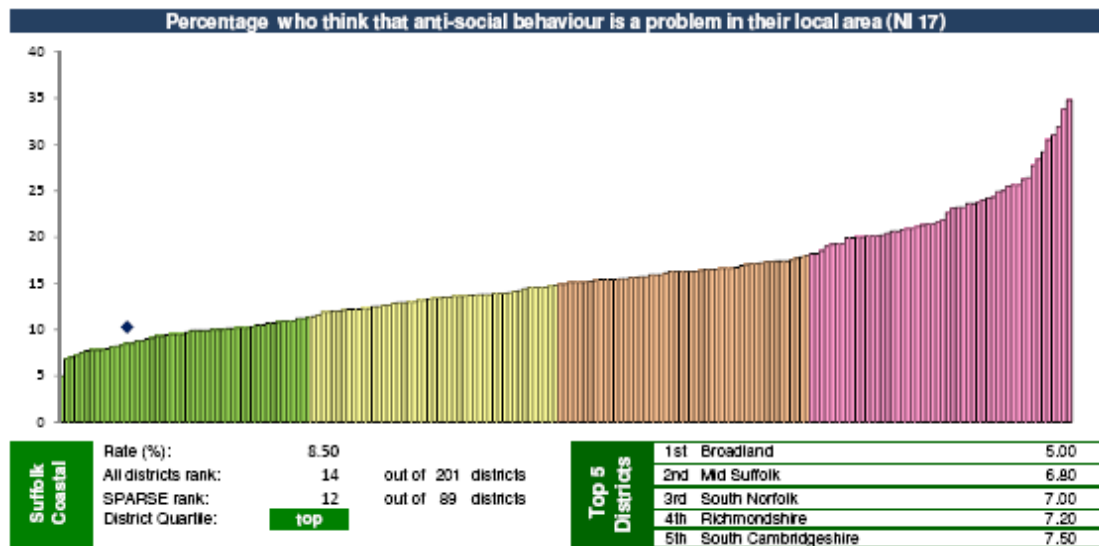
State of the District report: Suffolk Coastal

for the behaviour of their children (43%) and teenagers hanging round the streets (39%) as the two biggest problems in their area) in the Best Value General User Satisfaction Survey 2006. These figures have improved in the latest Place Survey – for example, only 28% of residents think teenagers hanging round the streets is a problem.

How big a problem anti-social behaviour is perceived to be in Suffolk Coastal



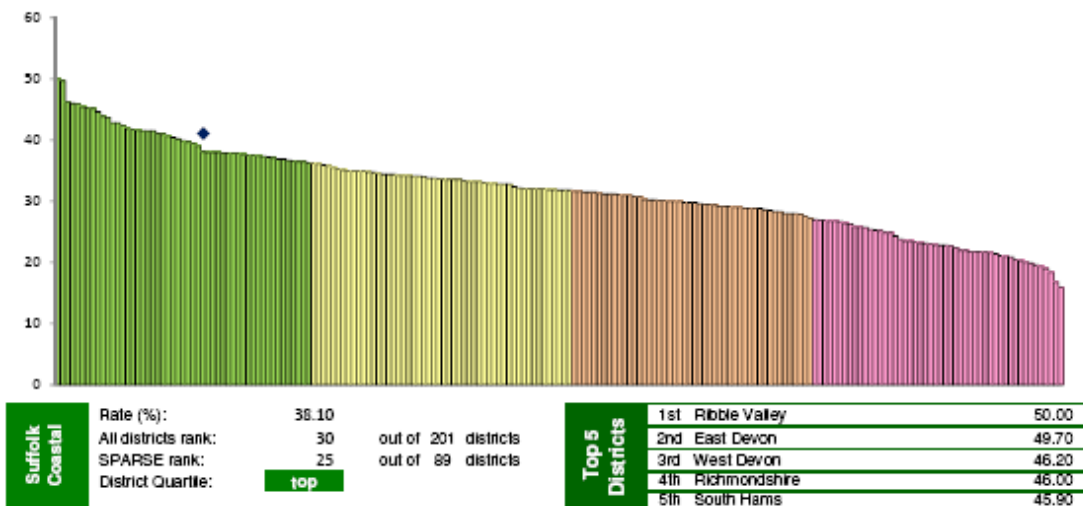
Source: Place Survey, 2008



Source: Place Survey, 2008

State of the District report: Suffolk Coastal

Percentage who agree that in their local area parents take enough responsibility for the behaviour of their children (NI 22)

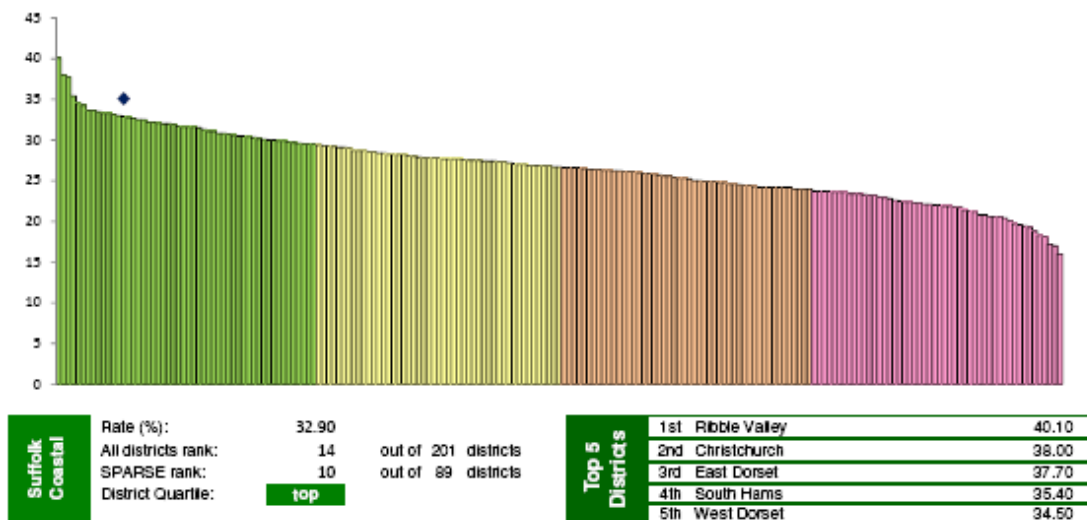


Source: Place Survey, 2008

Attitudes to local police working in partnership

The Place Survey (2008-09) asked whether people thought police and other local public services are successfully dealing with anti-social behaviour and crime in their area. The results for Suffolk Coastal are shown below. Suffolk Coastal was ranked 14th out of 201 districts with 32.9% of residents agreeing (the highest result was 40.1%).

Percentage who agree that the police and other local public services are successfully dealing with anti-social behaviour and crime in their local area (NI 21)



Source: Place Survey, 2008

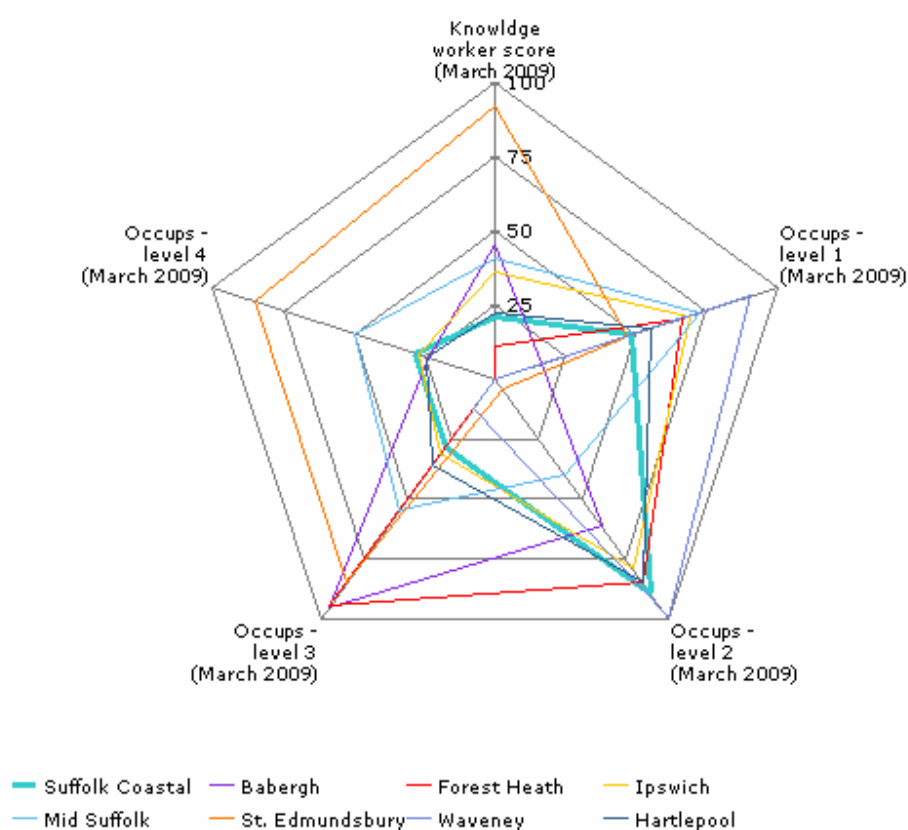
The latest BCS crime survey data (2008-09) reports that 49% of people in Suffolk agree that "Police and local councils are dealing with issues" (East of England: 50%, England and Wales 49%). No breakdown has been published for districts.

Knowledge workers

Although there are a high proportion of Suffolk Coastal businesses in the knowledge sector, there is a low proportion of residents identified as “knowledge workers”. This could show that more knowledge businesses are in production sectors rather than services, or that skilled employees are living outside the area (however, under Connectivity, “commuting jobs” are in the lowest 25%, so this is unlikely). Since the last District Profile, the proportion of higher level occupations (level 4 and level 3) has remained low, although performance against national figures has improved.

The context map shows that the proportion of knowledge workers is relatively low along the East coast, and that Ipswich also scores low (in contrast to Norwich and Cambridge).

This may be affected by the low level of skills and qualifications identified earlier.



Note: The chart displays the national ranking converted to a percentile score (The national average is always 50. Results above 50 (i.e. on the outside of the profile) are above the national median and those towards the centre are below the national median).

For this profile, it is better to score highly (i.e. be towards the outer edges) on:

- Knowledge worker score
- Higher levels of occupations

Indicators

Knowledge worker score: This residence based figure provides an index of proportion of the working age population who are employed in Knowledge occupations based on SOC groups (1) Managers and Senior Officials; (2)

State of the District report: Suffolk Coastal

Professional occupations; (3) Associate Professional and Technical occupations, based on place of residence. The figures in brackets are Standard Occupational Classification 2000 (SOC) codes. SOC codes are nationally recognised occupational groupings designed to capture type of work and the associated skills necessary for the job. These major SOC groups include the following occupations Corporate & Senior Officials, Production managers, Functional managers Quality and Customer Care, Financial Institutions and Office, Distribution Storage and Retail, Protective Service Officers, Health and Social Services, Farming, Horticulture, Forestry and associated fields, Hospitality & Leisure and Other Service Industries managers; Science Professionals; Engineering; Info & Communication Technology; Health; Teaching; Research; Legal; Business & Statistical; Architects; Town Planners; Surveyors Public Service Professionals; Librarians and Related Professionals; Science and Engineering Technicians; Draughtspersons & Building Inspectors and IT Service Delivery Occupations; Health Associate Professionals; Therapists; Social Welfare Associate Professionals; Protective Service Occupations; Artistic and Literary Occupations; Design Associate Professionals; Media Associate Professionals; Sports and Fitness Occupations; Transport Associate Professionals; Legal Associate Professionals; Business & Finance Associate Professionals; Sales & Related Associate Professionals; Conservation Associate Professionals and Public Service Associate Professionals. This is in relation to the national average, providing an indication of the level of knowledge sector employment relative to the national trend.

Occupations – level 4: The proportion of the working age population who are employed in manager and professional occupations based on SOC groups (1) Managers and Senior Officials; (2) Professional occupations, based on place of work. The figures in brackets are Standard Occupational Classification 2000 (SOC) codes. SOC codes are nationally recognised occupational groupings designed to capture type of work and the associated skills necessary for the job. These major SOC groups include the following occupations Corporate & Senior Officials, Production managers, Functional managers Quality and Customer Care, Financial Institutions and Office, Distribution Storage and Retail, Protective Service Officers, Health and Social Services, Farming, Horticulture, Forestry and associated fields, Hospitality & Leisure and Other Service Industries managers; Science Professionals; Engineering; Info & Communication Technology; Health; Teaching; Research; Legal; Business & Statistical; Architects; Town Planners; Surveyors Public Service Professionals; Librarians and Related Professionals.

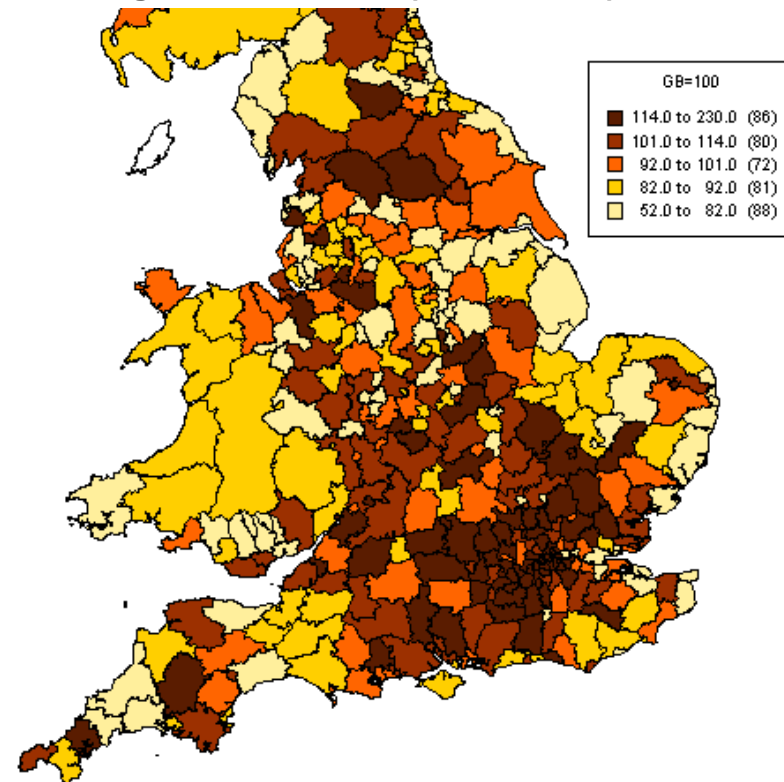
Occupations – level 3: The proportion of the working age population who are employed in skilled technical occupations. This is based on SOC groups Associate Professionals & Technical (3) and Skilled Trades (4). The figures in brackets are Standard Occupational Classification 2000 (SOC) codes. SOC codes are nationally recognised occupational groupings designed to capture type of work and the associated skills necessary for the job. These major SOC groups include the following occupations Science and Engineering Technicians; Draughtspersons & Building Inspectors; IT Service Delivery Occupations; Health Associate Professionals; Therapists; Social Welfare Associate Professionals; Protective Service Occupations; Artistic and Literary Occupations; Design Associate Professionals; Media Associate Professionals; Sports and Fitness Occupations; Transport Associate Professionals; Legal Associate Professionals; Business & Finance Associate Professionals; Sales & Related Associate Professionals; Conservation Associate Professionals and Public Service Associate Professionals, Agricultural Trades; Metal Forming, Welding and Related; Metal Machining Fitting; Vehicle Trades; Electrical Trades; Construction Trades; Building Trades; Textiles and Garment Trades; Printing Trades; Food Preparation Trades and Skilled Trades.

State of the District report: Suffolk Coastal

Occupations – level 2: The proportion of the working age population who are employed in lower skilled occupations. This is based on SOC groups Administrative & Secretarial (5), Personal Services, Care & Leisure (6), Sales & Customer Services (7), and Process & Machine Operatives (8). The figures in brackets are Standard Occupational Classification 2000 (SOC) codes. SOC codes are nationally recognised occupational groupings designed to capture type of work and the associated skills necessary for the job. This major SOC group includes Administrative: Government & Related; Finance; Records; Communications; General administrative; Secretarial and Related Occupations; Professionals, Healthcare & Related Personal Services; Childcare & Related Personal Services; Animal Care Services; Leisure & Travel Service Occupations; Hairdressers and Related Occupations; Housekeeping Occupations and Personal Services Occupations, Sales Assistants and Retail Cashiers; Sales Related Occupations and Customer Service Occupations, Process Operatives; Plant and Machine Operatives; Assemblers and Routine Operatives; Construction Operatives; Transport Drivers and Operatives; Mobile Machine Drivers & Operatives.

Occupations – level 1: The proportion of the working age population who are employed in elementary occupations (9), based on place of work. The figure in brackets is a Standard Occupational Classification 2000 (SOC) code. SOC codes are nationally recognised occupational groupings designed to capture type of work and the associated skills necessary for the job. This major SOC group includes Elementary occupations in the following areas: Agricultural Occupations; Construction Occupations; Process Plant Occupations; Goods Storage Occupations; Administration; Personal Service; Cleaning Occupations; Security Occupations and Sales Occupations.

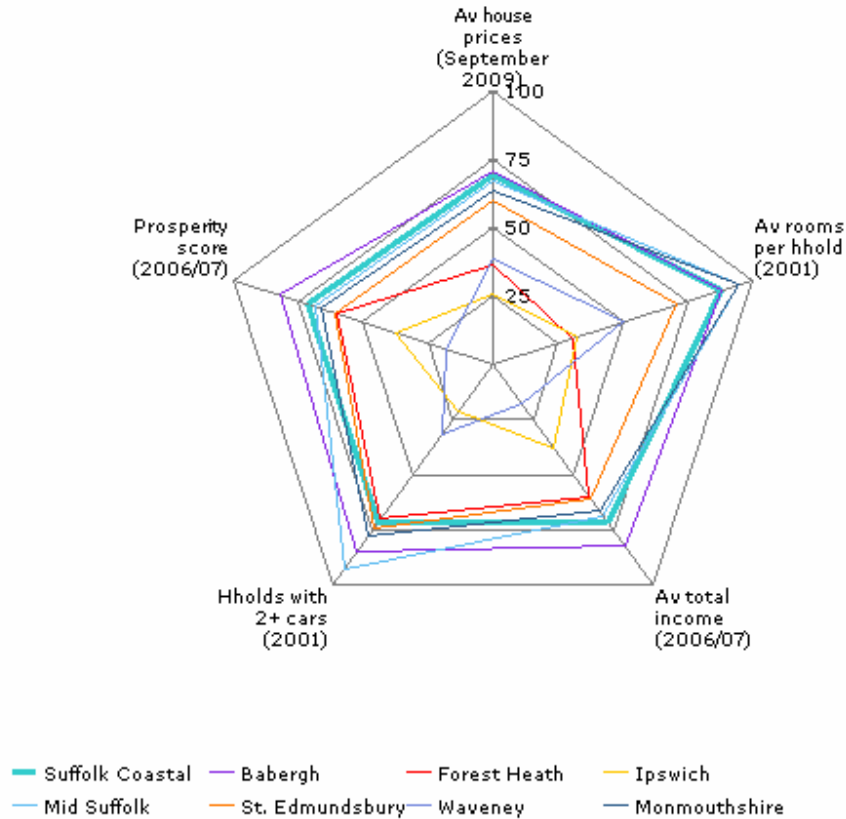
Knowledge worker score (March 2009)



Source: Local Knowledge; Annual Population Survey

Prosperity

The only indicator to have been updated since last year is House Prices. Although prices have declined, the rate of decline has reflected the national picture and the indicator has therefore remained static. .



Note: The chart displays the national ranking converted to a percentile score (The national average is always 50. Results above 50 (i.e. on the outside of the profile) are above the national median and those towards the centre are below the national median).

Prosperity score: The mean average total income indexed to the national average. Total income figures are based on taxable income including all employees; pension recipients and self-employed people. The figures are defined by local authority area and are residence based.

Deprivation & inequality

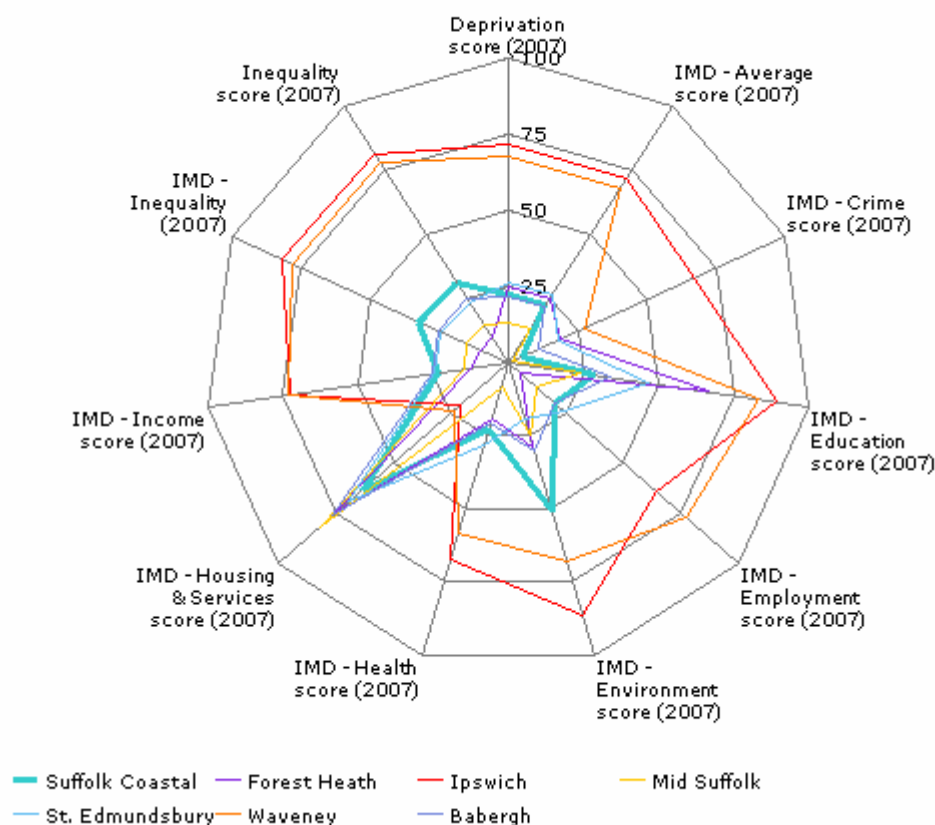
The Index of Multiple Deprivation indicators have not been updated since the last District Profile, so performance in this area has therefore not been updated.

On inequality, Suffolk Coastal performs below average for Suffolk authorities. The district is most similar to Babergh for deprivation and inequality. Overall performance as a district may mask issues at a lower level in rural areas.

Performance is low on the Housing & Services indicator because of “geographical barriers”, i.e. access to services. It is an issue throughout the East as well as the South West. Within Suffolk Coastal, scores are better in towns such as Felixstowe, Framlingham, Wickham Market, and the town centres of Woodbridge and Aldeburgh.

State of the District report: Suffolk Coastal

The environment indicator combines the indoors and outdoors living environments. Scores may be worse in Suffolk Coastal due to the levels of road accidents, and numbers of dwellings without central heating.



Note: The chart displays the national ranking converted to a percentile score (The national average is always 50. Results above 50 (i.e. on the outside of the profile) are above the national median and those towards the centre are below the national median).

For this profile, it is better to score low on each indicator (i.e. have a shape towards the centre).

Indicators

Super Output Areas (SOAs) are statistically standard areas with varying numbers per ward (usually around 15 SOAs per ward). They allow standard comparison between areas based on number of households. The scores for the SOAs within each district were summed and then divided by the number of SOAs in that district to give an average score.

Housing & services score: The Housing domain of the Index of Multiple Deprivation (IMD) is based on two sub domains:

- "Wider barriers" includes: housing overcrowding; households where a decision on their application under the homeless provision have been made; difficulty of access to owner occupation.
- "Geographical barriers" includes: road distance to GP premises; road distance to a supermarket or convenience store; road distance to a primary school; road distance to a post office.

State of the District report: Suffolk Coastal

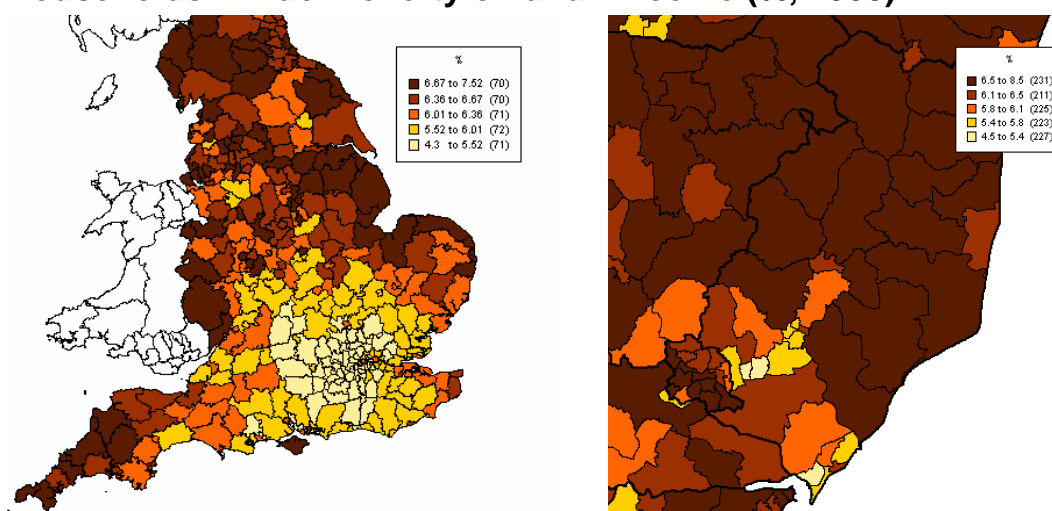
The Health domain of the Index of Multiple Deprivation (IMD) is based on the following indicators: years of potential life lost; comparative illness and disability ratio; measures of emergency admissions to hospital; adults under 60 suffering from mood or anxiety disorders.

The Environment domain of the Index of Multiple Deprivation (IMD) includes two sub domains:

- "The indoors living environment" includes social and private housing in poor condition; houses without central heating.
- "The outdoors living environment" includes air quality and road traffic accidents involving injury to pedestrians and cyclists.

Mental health average SOA score: This indicator is an update of the actual indicator used with other indicators within the final health domain of the Index of Multiple Deprivation 2004. The score provides a standardised average of all the SOAs within the area. The average mental health score is 0; all results above (or positive) indicate a higher likeliness of mental health issues in the area. All results below 0 (or a minus figure) indicate a less than likeliness level of mental health problems amongst people within the locality. Please note the figures are arbitrary figures, but serve as an indication of the levels of health deprivation within the locality. This score is devised by combining 4 sets of data covering incapacity benefit claimants, suicide rates, drug prescription records and mental health related hospital inpatient episodes.

Households in Fuel Poverty on a full income (% , 2008)



Source: Local Knowledge; www.fuelpovertyindicator.org.uk

The proportion of Households in Fuel Poverty on a full income: A household is in fuel poverty if, in order to maintain a satisfactory heating regime and cover other normal fuel costs, it would be required to spend more than 10% of its income on all household fuel use. Full Income in this definition includes Housing Benefit, Income Support for Mortgage Interest, and Council Tax Benefit.

Environment

Overview

Vision

The Local Strategic Partnership (LSP) vision for the environment includes:

- “Suffolk Coastal is a district that is supporting the countywide goal of becoming the ‘greenest county’, is equipped to meet the challenges of climate change and on target to meet the countywide 2025 targets of a 60% reduction in CO2 emissions and a climate-resilient Suffolk”
- “all the people who live in Suffolk Coastal have equal access to services and the district is an area of excellence for rural accessibility”

Local Futures also include access to services and housing affordability within the Environment category.

Summary

Suffolk Coastal is in the best 20% of districts for natural environment in Suffolk, the East of England and nationally. However, for amenities and services Suffolk Coastal is in the bottom 20% in Suffolk and the bottom 40% regionally or nationally. The district is ranked low for connectivity in particular. Many of these indicators are taken from the 2001 census, and have therefore not changed since the last District Profile.

In 2008 Suffolk Coastal was ranked third in Suffolk for overall access to services (behind Ipswich and Waveney), compared to fifth in 2005.

State of the District report: Suffolk Coastal

Environment: Quality of life indicators

Building on the best of the present, Suffolk Coastal is a district where people want to live and to invest, to care for others and the environment.

Progress against the overarching Vision has been reviewed using the high-level Quality of Life indicators, which are grouped accordingly.

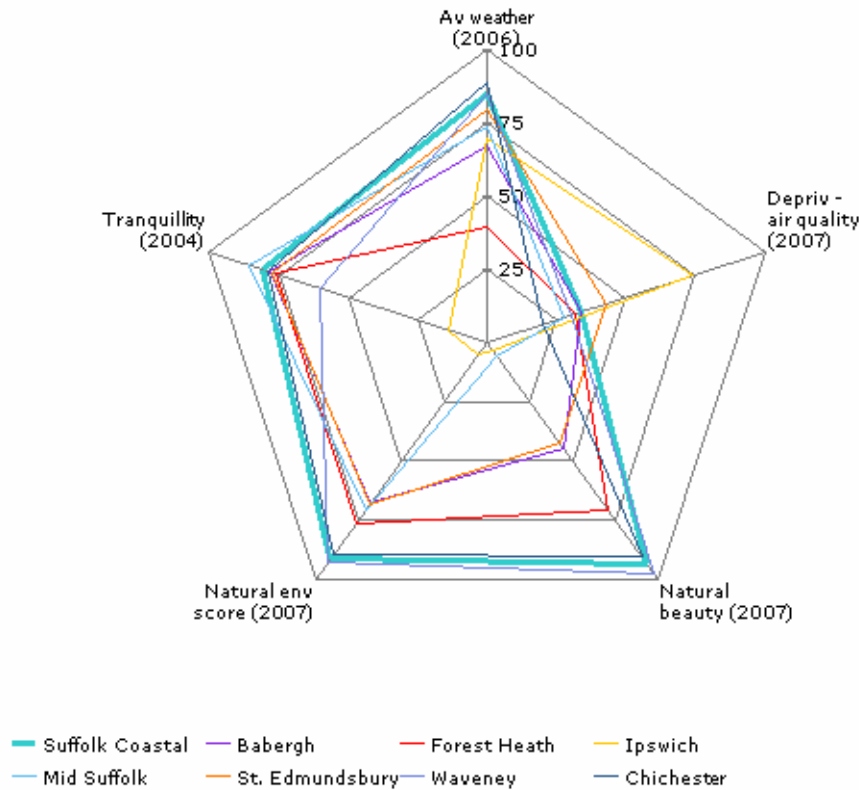
Trend	Indicator	Suffolk Coastal				Eastern				National			
		2009-10	2008-09	2007-08	2006-07	2009-10	2008-09	2007-08	2006-07	2009-10	2008-09	2007-08	2006-07
Where people care for the environment													
▼	Average annual domestic consumption of gas and electricity (kWh)		21,234	22,269	23,003		21,284	22,277	22,905		21,105	22,006	22,698
▼	Volume of household waste collected per head (kg)			434.4	461.6		521		523			(433)	511
▲	Percentage diverted from landfill (reused, composted or recycled)		48.49	42.94	38.31		41.69	38.13	38.27		39.04	36.36	30.94
▼	Total CO2 emissions (kt)			819	848			44,106	44,962			513,216	522,212
▼	CO2 emissions per capita (k/tonnes)			6.6	6.9			7.8	8.0			8.4	8.6

Source: various, updated January 2010.

Trend arrows show direction only – the underlying colour indicates improvement (green), no significant change (orange) or worsening performance (red).

Natural Environment

Suffolk Coastal performs well on all environment indicators. Air quality for the District as a whole is average when compared to the rest of England, though higher than some other coastal areas. Higher levels of air pollution are found in the south of the District.



Note: The chart displays the national ranking converted to a percentile score (The national average is always 50. Results above 50 (i.e. on the outside of the profile) are above the national median average and vice-versa below 50)

For this profile, it is better to score high on each indicator (i.e. have a shape towards the outer edges), except air quality.

Indicators

Deprivation - Air quality (IMD 2007 Environment domain underlying indicator): This indicator is used with other indicators within the final living environment domain of the Index of Multiple Deprivation 2007. The score provides a weighted average of the scores for all the SOAs within the area. A result of 1 indicates the national average air quality score. Figures above 1 indicate a poorer air quality and vice versa for figures below 1. The score is based on a weighted average of SOA scores based on results of four types of air pollution including nitrogen dioxide, sulphur dioxide, particles and benzene.

Tranquillity: This is a measure of the tranquillity of an area based on the population density. The higher the score, the more tranquil an area is in terms of population density

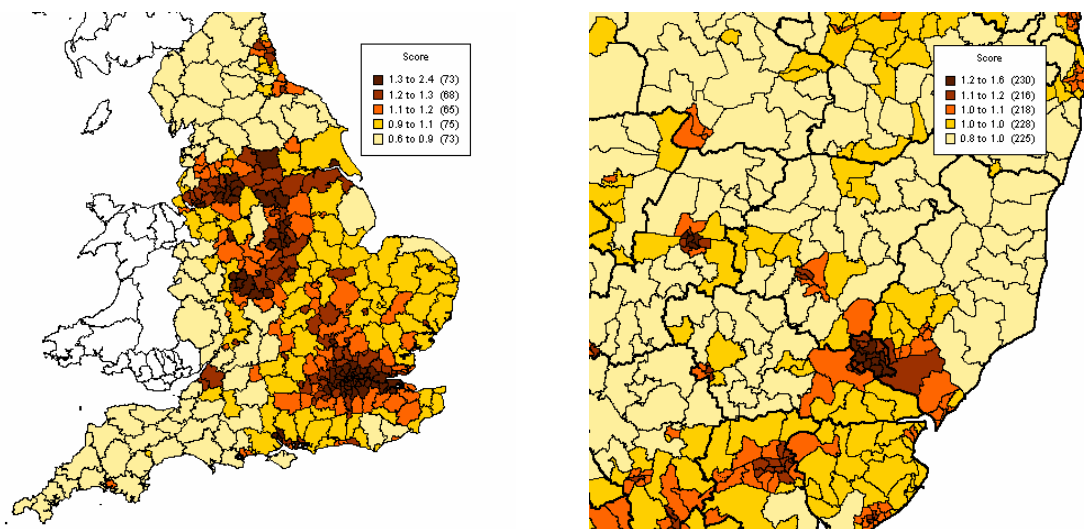
Natural environment score: Natural environment indicates the quality of an areas physical environment. The composite is developed by combining Natural Beauty, Tranquillity, Average weather, air quality, green flag awards and green space. The higher the score, the higher the quality of the natural environment

State of the District report: Suffolk Coastal

Natural beauty: This indicator provides a measure of the natural beauty in a given area. It consists of the following datasets; Areas of Outstanding Natural Beauty; Blue Flag Beaches (denoting high quality beaches); heritage coastlines; ancient woodland; nature reserves; national park designations and designation as an environmentally sensitive area. The higher the score, the more natural beauty in a given area.

Air quality by district and output area

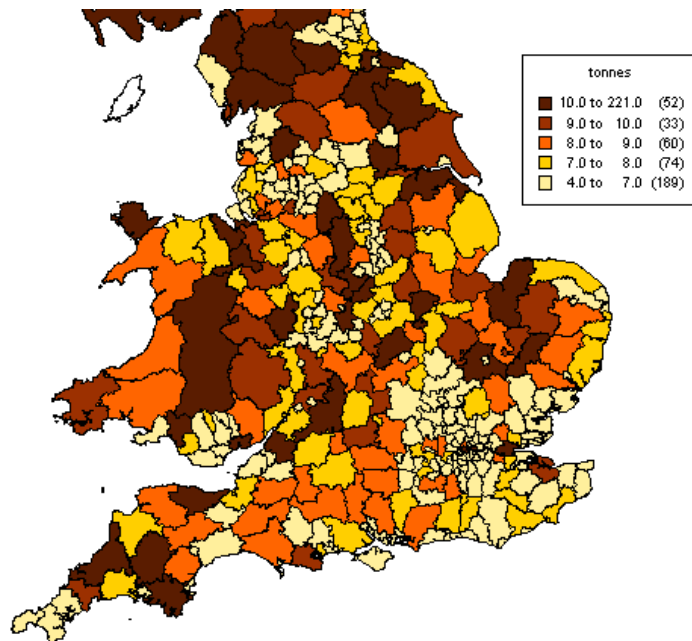
(IMD 2007 Environment domain underlying indicator) (2007)



Source: Local Knowledge; Indices of Deprivation and Classifications

Total carbon dioxide emissions per capita (2006)

There is no clear pattern to CO₂ emissions, although urban areas usually have lower levels, perhaps due to greater use of public transport and better access to services.

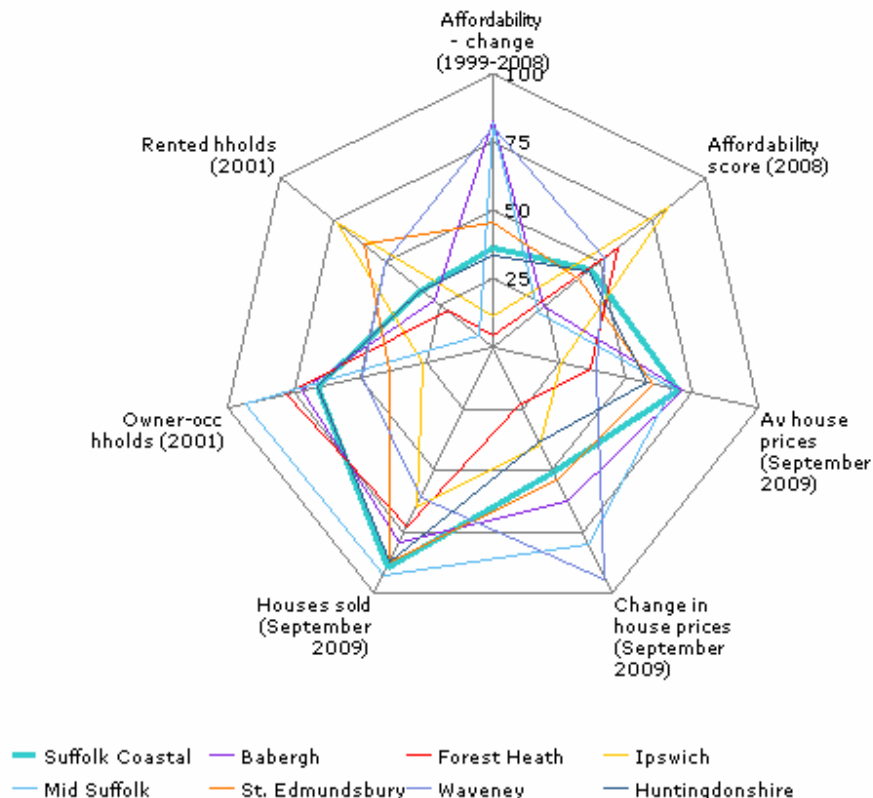


Source: Local Knowledge; Emissions of carbon dioxide for local authority areas

Housing affordability

Suffolk Coastal continues to score in the middle 20% of districts for housing affordability within Suffolk and nationally, although performance has improved against other districts in the region. Affordability has not improved at the same rate as other Suffolk districts and dropped between 2006 and 2007.

Access to affordable housing remains a challenge, as the recession has led to a fall in affordable housing completions.



Note: The chart displays the national ranking converted to a percentile score (The national average is always 50. Results above 50 (i.e. on the outside of the profile) are above the national median average and vice-versa below 50).

For this profile, it is better to score high (i.e. towards the outer edges) on:

- Affordability – change
- Affordability score

Indicators

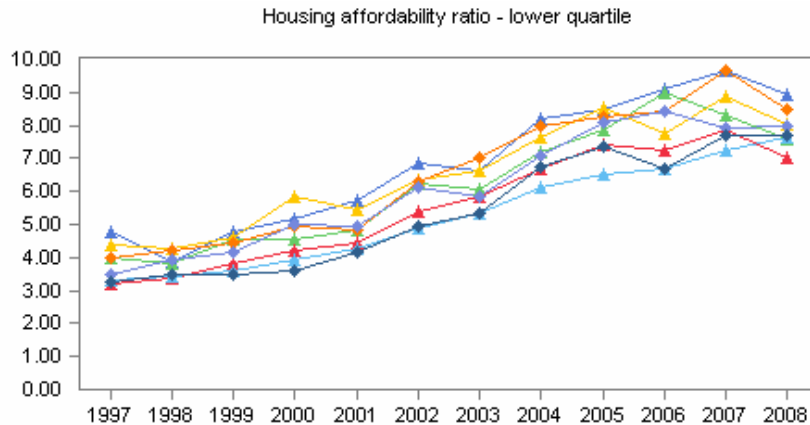
Affordability score: (Average House price (taken over four quarterly house price data releases)/Average gross weekly earnings)/England & Wales Average (Average House price (taken over four quarterly house price data releases)/Average gross weekly earnings (workplace based)). All districts are then ranked and the score for each area is reversed such that the area with the largest index score is attributed the lowest, and vice versa. This calculation was performed so that the most affordable areas would have the highest affordability score.

State of the District report: Suffolk Coastal

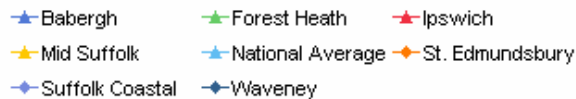
Affordability change: This indicator provides the percentage change in housing affordability ratio over time.

Housing affordability ratio

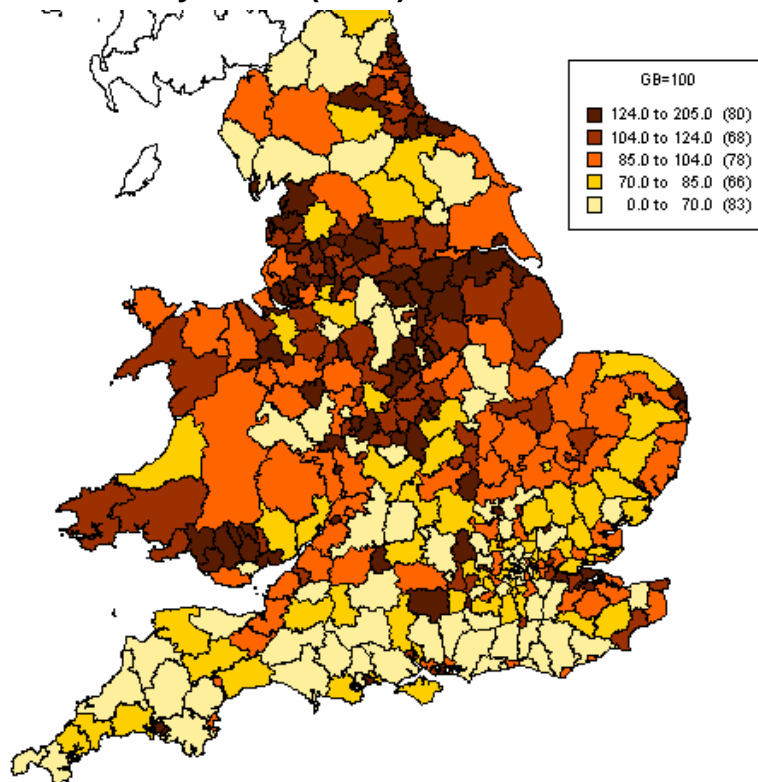
General affordability ratios can mask greater issues for households on low incomes. This trend data shows how affordable the lowest-priced houses are for those on low incomes. The ratio is slightly worse for people on low incomes than overall figures: 7.99 against 7.78.



Source: Local Knowledge; Table 576 Housing market: ratio of lower quartile house
Notes: Reproduced under the terms of the Click-Use License.



Affordability score (2008)



Source: Local Knowledge; Property Prices; Annual Survey of Hours and Earnings

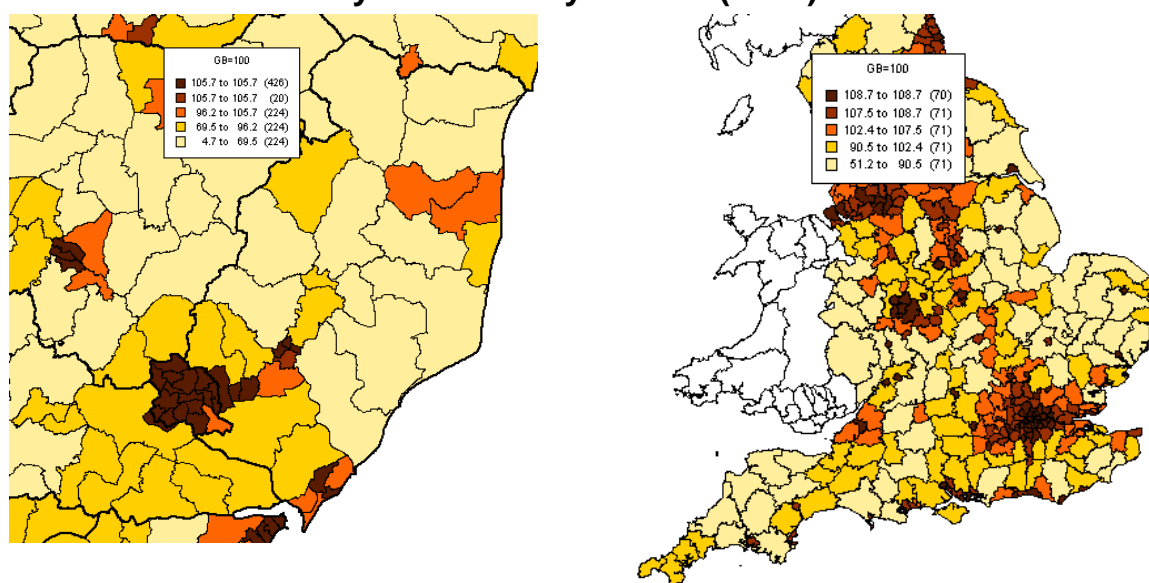
Access to Services

Access to services is usually low for rural and coastal areas, and high for districts that are mainly urban.

This indicator is a composite based on the indexes of the following: households who are a short distance from a public internet access point; supermarket; secondary school; primary school; post office; petrol station; library; jobcentre; doctors; bank/building society; cash point. The higher the figure, the higher the service provision in comparison to other areas

Access has improved in most Suffolk Coastal wards since 2005.

Access to services by ward and by district (2008)



Source: Local Knowledge; Rural Services Survey

Households within a short distance* of a service (%)

*a short distance of the service is 4km, or 2km for a primary school or post office

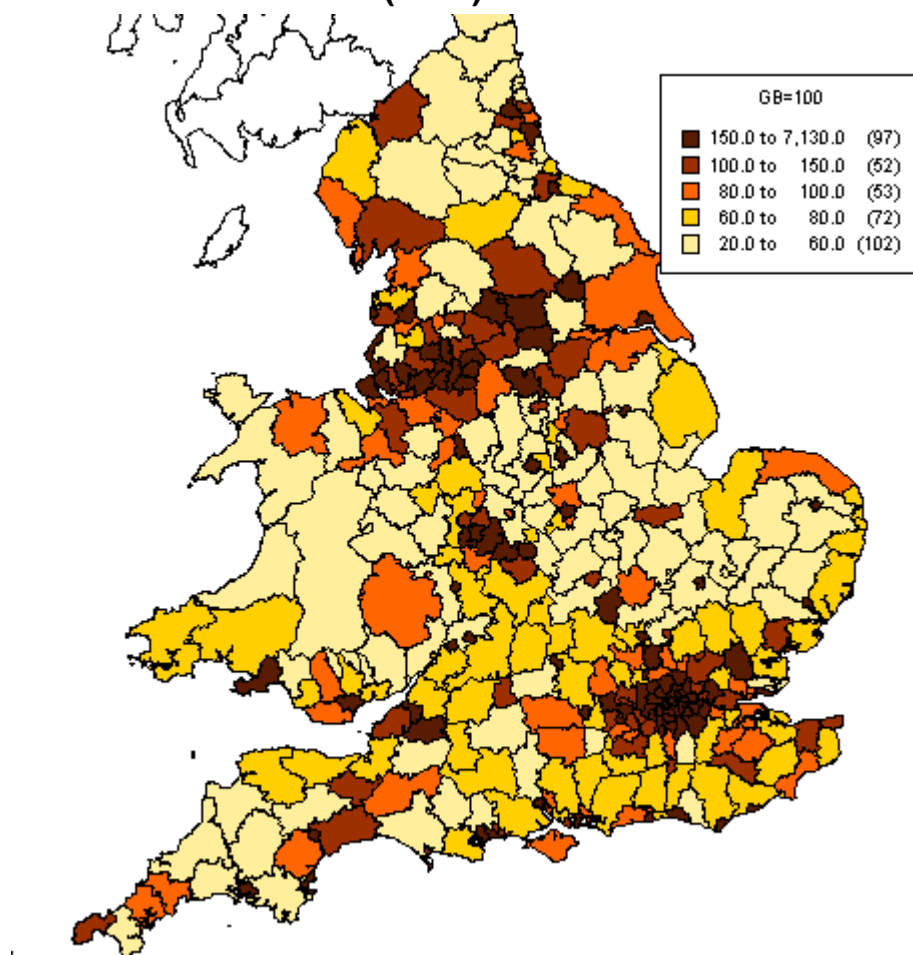
Service	Suffolk Coastal	Babergh	Forest Heath	Ipswich	Mid Suffolk	St. Edmundsbury	Waveney
Bank or Building Society	77.15	61.38	86.35	100.00	46.11	72.91	87.59
Doctors Surgery	91.12	94.57	91.16	100.00	77.46	89.29	96.15
Post Office	86.72	84.83	94.88	99.98	73.83	90.51	92.24
Primary School	88.52	89.62	86.73	100.00	84.33	88.24	94.74
Secondary School	73.41	75.12	78.07	100.00	67.60	80.68	90.61

Source: Local Knowledge

Amenities

Suffolk Coastal has a relatively high level of employment in hotels (only Forest Heath has a higher proportion), and high density of heritage sites (second to Ipswich). It has low density of listed buildings and cultural amenities, as may be expected in a sparsely populated District, which is the largest in Suffolk.

Local amenities score (2008)



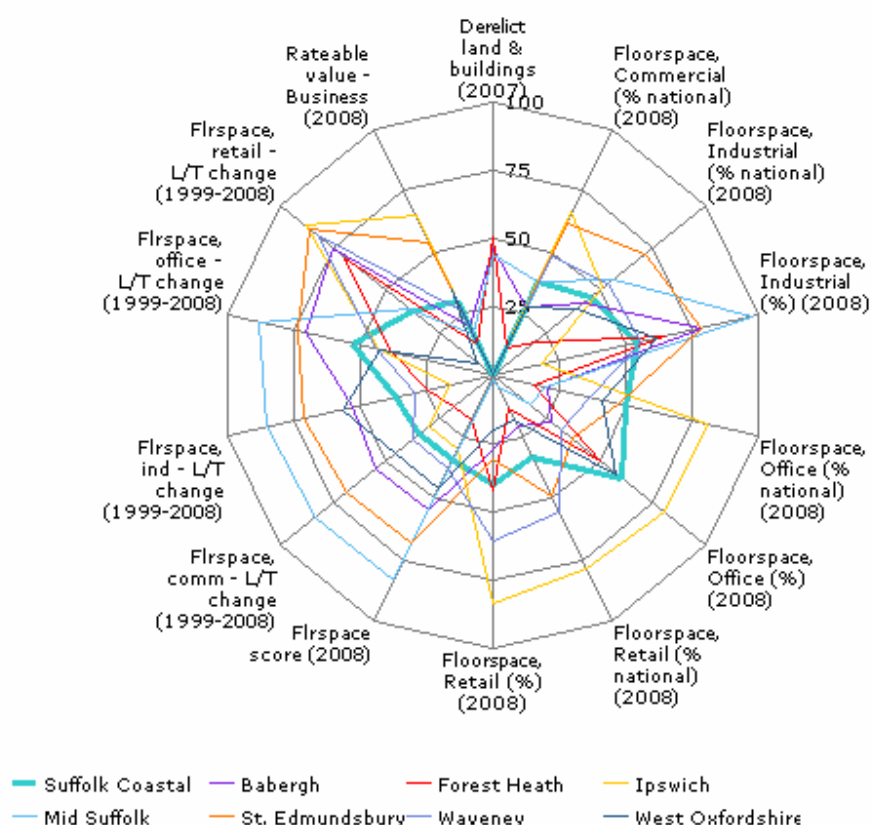
Source: Local Futures - Source: Local Knowledge; Treasures of Britain; BFI Film & Television Handbook; UK Theatres Online; Michelin Guide to Hotels, Restaurants and Pubs; ArtGuide.co.uk; Annual Business Inquiry; Commercial and Industrial Floorspace and Rateable Value Statistics, Green Flag awards

Local amenities score: The relative provision of amenities such as cinema seats, theatres, museums, galleries, libraries, hotels, restaurants and pubs, and heritage sites compared with the national average. Local Amenities considers national heritage sites per 1000 sq m, cultural amenities per 1000 sq m and the proportion of employment in hotels and restaurants, Cafe Culture, 2007 (counts of national cafe chains across the country), retail floorspace (000sqm), sports arenas and green flag awards. Each one of these indicators was indexed to the GB Average, and then all indices were summed and averaged. The higher the score, the more amenities in the area

Commercial & industrial property

The profile in this area is broadly static since the last District Profile. Performance against these indicators continued to show a need for more premises and floorspace to be made available to businesses.

State of the District report: Suffolk Coastal



Note: The chart displays the national ranking converted to a percentile score (The national average is always 50. Results above 50 (i.e. on the outside of the profile) are above the national median average and vice-versa below 50).

Indicators

Floorspace score: This score provides an index of the percentage change in the area of floor space used in the commercial sector. Commercial floor space is defined as all floor space used for non-domestic purposes including retail, office and industrial activities. This provides a score showing the change in floor space in relation to the national floor space change.

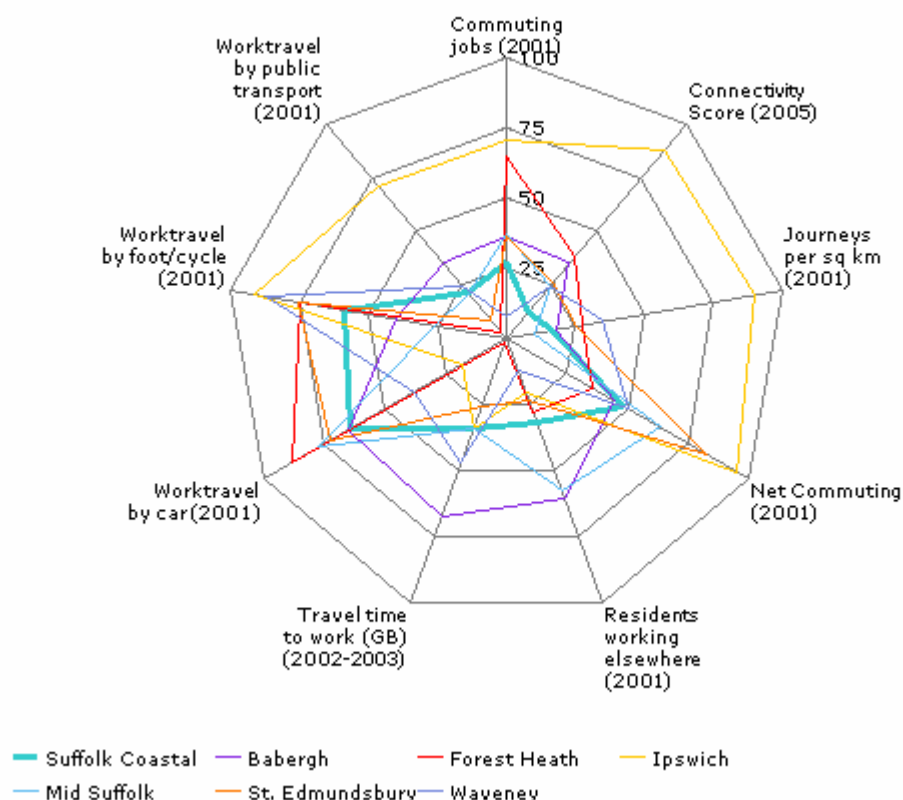
Change in commercial & industrial floorspace (long-term): The change in commercial (all bulk) floorspace. Calculation: $(\text{Commercial floorspace 2008} - \text{Commercial floorspace 1999}) / \text{Commercial floorspace 1999} * 100$.

Connectivity

Most of the indicators in this section are taken from the 2001 census and the data presented here has therefore not changed since the last District Profile. Suffolk Coastal performs well on some indicators (with below median levels of commuting jobs, journeys per km², residents working elsewhere and travel to work time), particularly as it is a sparsely-populated district. However, work travel by car is relatively high, and work travel by public transport proportionally low.

The connectivity score for Suffolk Coastal is very low as it is based on a count of railway stations, ports, airports and motorway junctions. A low score in this is usual for rural districts.

State of the District report: Suffolk Coastal



Note: The chart displays the national ranking converted to a percentile score (The national average is always 50. Results above 50 (i.e. on the outside of the profile) are above the national median average and vice-versa below 50).

For this profile, it is better to score low (i.e. to have a value towards the centre) on:

- Work travel by car
- Travel to work time
- Residents working elsewhere
- Commuting jobs (Jobs taken by in-commuters)

And high (i.e. to have a value towards the outer edges) on:

- Work travel by public transport
- Work travel by foot/cycle

Indicators

Connectivity score: The connectivity index is based on proximity to and presence of airports; number of rail stations (excluding the underground); ports and motorway junctions. The resulting figure provides an indication of the areas connectivity, with figures over 100 indicating a higher than average level of connectivity.

Journeys per sq km: The number of journeys taken daily in the area as a proportion of the total land area.

Commuting jobs (Jobs taken by in-commuters): The proportion of jobs in the area filled by people who travel into the area to work each day from outside the district boundary.