



Neighbourhood and Home Watch Network (England and Wales)

June 2010



What is Neighbourhood Watch?

Neighbourhood Watch (also known as Home Watch) is essentially a partnership where people come together to make their communities safer.

It involves the police, community safety officers, local authorities, voluntary organisations and above all, individuals and families who want to make their neighbourhoods a better place to live.



Since 2007, Neighbourhood and Home Watch Network (NHWN) has worked closely with the Home Office and the Association of Chief Police Officers (ACPO) to establish credibility as a recognised voice of the movement.

The Police Service and the Home Office value the important role Neighbourhood Watch schemes play in helping deliver safer neighbourhoods.



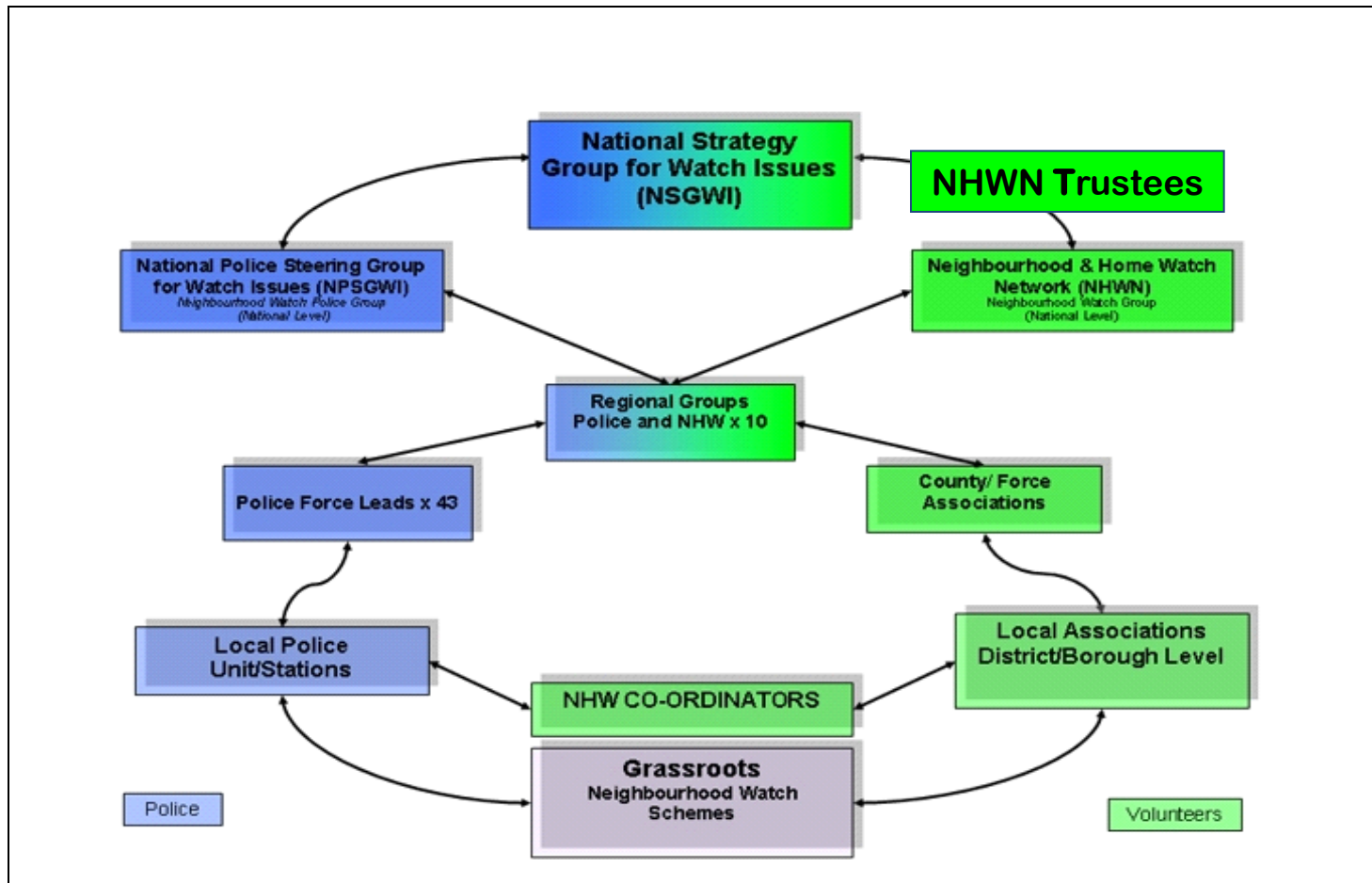
What is the Neighbourhood Watch and Home Watch Network (NHWN)?

NHWN represents a collective voice for the Neighbourhood Watch movement across England and Wales.

It is constituted as an independent third sector charitable organisation which works at a National level.



National Framework





NHWN Structure

NHWN Trustee Board

6 Trustees including 3 Honorary Officers:

Chair - Marion Lewis

Dr John Perkins

Vice Chair & Secretary - Jim Maddan

Julie Goodfellow

Treasurer - Alastair McCrindle

Ron Taylor

NHWN Advisory Group

10 members representing 9 Government Office Regions and Wales

NHWN Staff

Operations Director – Kate Daisley

Development Manager – Sundeep Gill

Information and Database Officer – Catherine Dunn



NHWN Vision

NHWN's vision is for a caring society that is founded upon trust and respect in which people are safe from crime and live in communities that enjoy a good quality of life.



NHWN Mission

NHWN's mission is to enable Neighbourhood and Home Watch to improve community life across England and Wales.

NHWN's 5 year mission is to transform itself into an independent, credible and effective voluntary sector organisation that is focused on improving the quality of community life.



In order to accomplish this NHWN will focus their work on the following:

- Supporting and developing the grassroots in keeping with their needs.
- Expanding the inclusivity of NHW.
- Building the profile and influence of NHW.
- Establishing a robust, effective and sustainable structure.
- Increasing the networks financial sustainability.

These are expanded further on the following slides.



Supporting and developing the grassroots in keeping with their needs

- Improving information flows within the network.
- Trialling and launching a single communication system.
- Providing a suite of support services that are designed to meet the common needs of local schemes and their members.



Supporting and developing the grassroots in keeping with their needs

- Promoting and developing the network to include establishing toolkits, Vocationally Related Qualifications (VRQ), sharing good practice, broadening engagement and strengthening NHWN regional structures.
- Co-ordinating activities with key partners at a national level and promoting effective co-ordination at all levels.



Expanding the inclusivity of NHW

- Developing and implementing a inclusivity strategy to broaden public engagement with NHW and to be representative of the wider community.
- Promoting inclusivity via the website to inspire new schemes to register.



Building the profile and influence of NHW

- Working in partnership with voluntary and community organisations that share common goals, both nationally and locally.
- Representing the shared views of NHW grassroots members.



Establishing a robust, effective and sustainable structure

- Strengthening the governance structure of NHWN.
- Establishing and maintaining a national office infrastructure.
- Strengthening NHWN's organisational capability at regional and national level.
- Ensuring robust financial and risk management practices are in place.



Increasing the networks financial sustainability

- Maximising income generation opportunities through gifts, grants, grassroots membership and contacts, setting short, mid and long term targets.
- Identifying, developing and sustaining relationships with NHWN's key supporters.
- Maintaining an up to date understanding of the policy and funding environment.



Key actions for 2010/2011

- Identifying and promoting opportunities to volunteer at NHWN.
- Developing NHWN support programme including the distribution of new toolkits and good practice case studies.
- Promoting appropriate third sector training opportunities to local schemes.
- Developing a new NHWN website and registering new members and schemes.



Key actions for 2010/2011

- Launching the new NHW branding and visual identity nationally.
- Developing a inclusivity strategy.
- Developing a Vocationally Related Qualification (VRQ).
- Working with voluntary sector organisations nationally and promoting similar partnerships at a local level.
- Developing and implementing a single communication system.



NHWN Contact Information

- Address: Beaumont Enterprise Centre, 72 Boston Road, Beaumont Leys, Leicester, LE4 1HB
- Enquiry Line: 0116 229 3118
- Fax : 0116 235 1844
- Email: enquiries@nationalnhw.org
- Web: www.mynhw.co.uk

Neighbourhood & Home Watch Network (England and Wales) is a
Registered Charity no. 1133637