



State of the District 2011:

Report for Suffolk Coastal Local Strategic Partnership

**Update to Part 1 of "Suffolk Coastal 2021"
The Sustainable Community Strategy
for Suffolk Coastal District**

Contents

EXECUTIVE SUMMARY.....	3
<i>Report card</i>	4
<i>Quality of Life indicators</i>	5
INTRODUCTION.....	7
<i>Purpose</i>	7
<i>History</i>	7
<i>Data</i>	7
ECONOMY	8
<i>Summary</i>	9
<i>Earnings</i>	10
<i>Industrial structure</i>	11
<i>Businesses</i>	14
<i>Skills & qualifications</i>	16
<i>Labour market</i>	19
SOCIETY	21
<i>Summary</i>	22
<i>Health</i>	22
<i>Crime</i>	25
<i>Knowledge workers</i>	26
<i>Prosperity</i>	28
<i>Deprivation & inequality</i>	28
ENVIRONMENT.....	30
<i>Summary</i>	30
<i>Natural Environment</i>	31
<i>Housing affordability</i>	32
<i>Access to Services</i>	34
<i>Amenities</i>	34
<i>Commercial & industrial property</i>	35
<i>Connectivity</i>	36
INDICATOR DEFINITIONS.....	38
<i>Economy</i>	38
<i>Society</i>	39
<i>Environment</i>	42

Executive Summary

In the last year there has been a change of government and ongoing changes in the national economy. However, the impact of these changes is not yet visible in the annual statistics.

To ensure consistency and comparison with previous reports, we have reported the most recent data and added more up to date information where available.

Economy

“Where people want to invest”

Suffolk Coastal continues to be in the top 20% of districts for skills and qualifications compared to other Suffolk authorities and other districts in the East of England. This issue had been flagged red for Suffolk’s Area Assessment.

Suffolk Coastal’s ranking for economic scale (size of the economy), has fallen slightly within Suffolk. Resident and workplace earnings remain above the median for Great Britain and Suffolk (although resident earnings are slightly lower than the median East salary).

Youth unemployment is high, at 28.9%. In line with regional and national trends, the proportion of people claiming Job Seekers Allowance has decreased in the district, and remains below regional and national rates. However, the proportion of claimants who have been out of work for more than a year has increased significantly (though it is still lower than regional or national rates).

Society

“Where people want to live”, and “where people care for others”

Our report card remains unchanged – apart from improved performance for the proportion of residents in knowledge work. Inequality remains an issue when compared to the rest of Suffolk. Levels of prosperity are relatively high, and deprivation is relatively low – although the figures can mask hidden deprivation.

Suffolk Coastal is in the top performing 20% of districts locally, regionally and nationally for good health and low crime. However, access to secondary care (a ratio of the number of operations such as joint replacement, cataract removal to population in need) and to social care (social services staff and care places for older people) has been assessed as poor.

Environment

“Where people care for the environment”

Suffolk Coastal’s performance has not changed in comparison to other districts for the main environment indicators. Housing affordability has worsened, which may be due to the low rate of sales. Access to services and connectivity remain of concern. CO2 emissions remain low. The amount of waste collected continues to decrease, while the proportion of waste diverted from landfill is now over 50%.

Report card

In the preparation of Suffolk Coastal 2021, opportunities and challenges were considered in the economic, social and environmental context.

The report card below summarises the contents of the full report by showing how Suffolk Coastal district is performing in key areas compared to districts in other areas. Each “grade” contains 20% of districts within that area.

	Suffolk		East of England		National	
	Trend	Score	Trend	Score	Trend	Score
Economy						
Economic Scale	▼	B	▶	C	▶	C
Productivity	▶	A	▶	C	▲	B
Economic Change	▼	D	▶	C	▶	C
Industrial Structure	▼	B	▼	D	▼	C
Business & Enterprise	▶	C	▶	D	▼	E
Skills & Qualifications	▶	A	▶	A	▼	B
Labour Market	▲	B	▶	B	▶	B
Society						
Knowledge Workers	▲	B	▲	C	▲	B
Prosperity	▶	A	▶	C	▶	B
Deprivation	▶	B	▶	B	▶	B
Inequality	▶	D	▶	B	▶	B
Health	▶	A	▶	A	▶	A
Crime	▶	A	▶	A	▶	A
Environment						
Housing Affordability	▶	C	▼	C	▼	D
Floorspace Change	▶	D	▶	D	▶	D
Connectivity	▶	E	▶	E	▶	E
Services	▶	E	▶	D	▶	D
Amenities	▶	A	▶	C	▶	D
Natural Environment	▶	A	▶	A	▶	A

Local Futures, January 2011

State of the District Report 2011: Suffolk Coastal

Quality of Life indicators

“Building on the best of the present, Suffolk Coastal is a district where people want to live and to invest, to care for others and the environment.”

Trend	Indicator	Suffolk Coastal					Eastern					National				
		2010-11	2009-10	2008-09	2007-08	2006-07	2010-11	2009-10	2008-09	2007-08	2006-07	2010-11	2009-10	2008-09	2007-08	2006-07
Economy																
▲	Percentage working age population in employment		77.2	76.4	72.5	74.7		73.5	75.1	75.7	74.9		70.3	72.0	72.5	74.3
▼	Count of active enterprises		5,240	5,310	5,340	5,140		238,930	236,355	232,185	225,140		2,282,200	2,265,740	2,222,555	2,151,845
▶	Four year survival rate of enterprises (%)		55.9	55.9	62.1			55.4	56.1	56.9			53.7	54.7	54.3	
▲	Median total gross annual earnings (£, resident)	22,161	22,068	24,002	20,342	19,746	22,513	22,522	21,846	20,850	20,274	21,447	21,455	20,913	20,118	19,500
▼	Job Seekers Allowance claimants as a percentage of resident working age population	1.8	2.1	0.9	1.1	1.1	3.0	3.3	1.6	1.7	1.8	3.7	3.9	2.1	2.2	2.4
▲	Percentage of those that have been out of work for more than a year	12.0	5.1	7.0	11.9	9.4	16.6	7.0	11.8	16.1	14.0	17.5	8.2	12.4	16.9	15.2
▲	Percentage working age population claiming key benefits	9.1	7.5	6.3	6.5	6.7	11.7	10.4	8.7	8.8	8.9	14.7	13.3	11.6	11.9	12.3
▲	Percentage working age population with NVQ level 3 or above		52.5	49.5	43.3	42.9		46.9	43.4	43.4	41.8		49.3	47.0	46.4	45.5
Society																
▼	Infant mortality			3.6	4.4	4.2				4.1	4.2			4.8	4.9	5.00
▶	Life expectancy at birth (m)		80.6	80.6	80.3	79.8		79.3	78.9	78.7	78.3		78.3	77.9	77.7	77.3
▶	Life expectancy at birth (f)		83.8	83.8	83.4	82.9		83.0	82.8	82.6	82.3		82.3	82.0	81.8	81.6
▼	Teenage pregnancy conceptions under 18 per 1,000 females 15-17			20.8	22.1	24.6			32.6	33.1	33.3			41.2	41.9	40.9
▲	Domestic burglaries per 1,000 households		4.3	2.6	4.5	4.1			9.6	9.5	9.1			12.5	12.8	13.4
▼	Violent offences committed per 1,000 population		7.4	7.8	9.4	9.8			12.2	13.2	14.6			16.0	17.6	19.3
▼	Theft of a vehicle per 1,000 population		0.6	0.7	0.8	1.1			21.1	2.6	2.8			2.7	3.2	3.6
▼	Sexual offences per 1,000 population		0.6	0.6	0.6	0.8			0.8	0.8	0.9			0.9	1.0	1.1

State of the District Report 2011 : Suffolk Coastal

Trend	Indicator	Suffolk Coastal					Eastern					National				
		2010-11	2010-11	2010-11	2010-11	2010-11	2010-11	2009-10	2008-09	2007-08	2006-07	2010-11	2009-10	2008-09	2007-08	2006-07
Environment																
▼	House price to income ratio		6.61	7.78	7.31	6.97		6.80	7.78	7.88	7.43		6.27	6.94	7.26	6.91
▼	Average annual domestic consumption gas and electricity (kWh)		20,002	21,234	22,269	23,003		19,893	21,284	22,277	22,905		19,536	21,105	22,006	22,698
▼	Volume of household waste collected per head (kg)		390	408	434	462			521		523		457	473	495	508
▲	Percentage diverted from landfill (reused, composted or recycled)		51.8	48.5	42.9	38.3		46.1	44.5	41.2	38.3		39.7	37.6	34.5	30.9
▼	Total CO2 emissions (kt)			833	852	881			39,620	40,162	40,918			430,170	436,821	446,056
▼	CO2 emissions per capita (k/tonnes)			6.7	6.9	7.3			6.9	7.1	7.3			7.0	7.2	7.4

Source: various, updated January 2011.

Trend arrows show direction only – the underlying colour indicates improvement (green), no significant change (orange) or worsening performance (red).

Introduction

Purpose

The State of the District report shows our district's distinctive identity, to inform the Local Strategic Partnership when they consider what that identity should look like in future. The Local Strategic Partnership and individual partners can then plan and prioritise work to achieve that change, in accordance with Suffolk Coastal 2021.

History

The State of the District report was first compiled in April 2008 (then called Place-shaping for Suffolk Coastal Local Strategic Partnership: A District Profile) to support the decision-making process for Suffolk Coastal 2021. It compared Suffolk Coastal District with other districts in Suffolk, and the rest of England, as well as identifying hotspots within the District.

An updated report was produced in April 2009 for the LSP to review progress and consider wider changes. In 2010 quality of life indicators were added, and publication moved to January to support the planning process.

Data

As with previous versions of the State of the District report, this report uses official government statistics – either aggregated by Local Futures, or public sector information licensed under the Open Government Licence v1.0. The date is shown for all information as some figures are not available for the latest year, but may help to identify trends.

The report also includes:

- Quality of life indicators. These were previously reported separately. They have been revised as some statistics are no longer available and are incorporated within the report, and
- Information from the 2008 Place Survey (a survey of residents which is carried out every 2 years).

Each topic (economy, society and environment) begins with a profile chart (looking like a spider's web) that shows how Suffolk Coastal District compares with other districts (i.e. other lower level local authority areas). This profile application converts all results to a percentile which is a scale of between 0 and 100. This allows data that originally used different scales to be compared. The national average is always 50. Results above 50 (i.e. on the outside of the profile) are above the national median and those towards the centre of the profile (i.e. below 50) are below.

In profile charts some indicators are good if they have a high value (such as mean earnings), some are better with a low value (claimants of incapacity benefits, mortality rates, crime). Where possible, notes for each chart will indicate which indicators should be high or low.

Thematic maps compare different areas. The palest colours have the lowest figures: the darker the colour, the higher the results.

Further information

For more information, please contact the Policy & Performance Team at Suffolk Coastal District Council (01394 444435, performance@suffolkcoastal.gov.uk).

Economy

Vision

The Local Strategic Partnership (LSP) vision for the economy includes: “in 2021 we have developed a strong and diverse economy where young people and adults have the opportunity to work, earn, and improve their life chances.”

Quality of life indicators

Trend	Indicator	Suffolk Coastal					Eastern					National				
		2010-11	2009-10	2008-09	2007-08	2006-07	2010-11	2009-10	2008-09	2007-08	2006-07	2010-11	2009-10	2008-09	2007-08	2006-07
Economy																
▲	Percentage working age population in employment		77.2	76.4	72.5	74.7		73.5	75.1	75.7	74.9		70.3	72.0	72.5	74.3
▼	Count of active enterprises		5,240	5,310	5,340	5,140		238,930	236,355	232,185	225,140		2,282,200	2,265,740	2,222,555	2,151,845
▶	Four year survival rate of enterprises (%)		55.9	55.9	62.1			55.4	56.1	56.9			53.7	54.7	54.3	
▲	Median total gross annual earnings (£, resident)	22,161	22,068	24,002	20,342	19,746	22,513	22,522	21,846	20,850	20,274	21,447	21,455	20,913	20,118	19,500
▼	Job Seekers Allowance claimants as a percentage of resident working age population	1.8	2.1	0.9	1.1	1.1	3.0	3.3	1.6	1.7	1.8	3.7	3.9	2.1	2.2	2.4
▲	Percentage of those that have been out of work for more than a year	12.0	5.1	7.0	11.9	9.4	16.6	7.0	11.8	16.1	14.0	17.5	8.2	12.4	16.9	15.2
▲	Percentage working age population claiming key benefits	9.1	7.5	6.3	6.5	6.7	11.7	10.4	8.7	8.8	8.9	14.7	13.3	11.6	11.9	12.3
▲	Percentage working age population with NVQ level 3 or above		52.5	49.5	43.3	42.9		46.9	43.4	43.4	41.8		49.3	47.0	46.4	45.5

Source: various, updated January 2011.

Trend arrows show direction only – the underlying colour indicates improvement (green), no significant change (orange) or worsening performance (red).

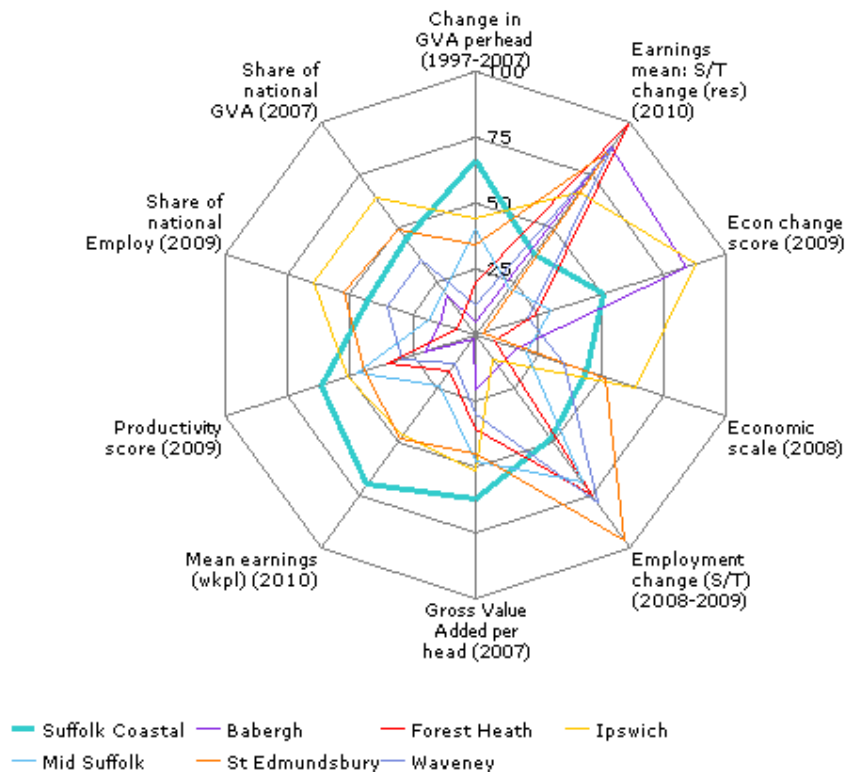
Summary

Suffolk Coastal continues to be in the top 20% of districts for skills and qualifications compared to other Suffolk authorities and other districts in the East of England. This issue had been flagged red for Suffolk's Area Assessment.

Suffolk Coastal's ranking for economic scale (size of the economy), has fallen slightly within Suffolk. Resident and workplace earnings remain above the median for Great Britain and Suffolk (although resident earnings are slightly lower than the median East salary).

Youth unemployment is high, at 28.9% of 16-24 year olds. In line with regional and national trends, the proportion of people claiming Job Seekers Allowance has decreased in the district, and remains below regional and national rates. However, the proportion of claimants who have been out of work for more than a year has increased significantly (though it is still lower than regional or national rates).

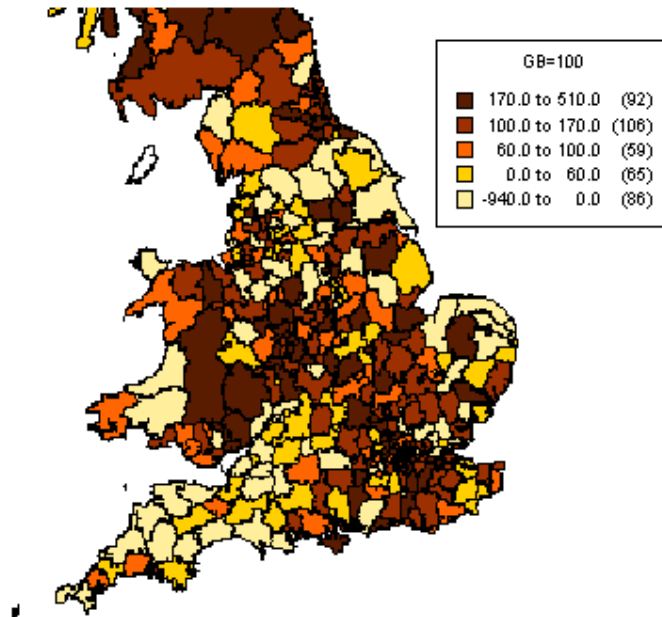
Gross Value Added (GVA) indicates the size of the local economy. The GVA figures are three years old and do not reflect the current economic climate, however they are useful for bench-marking and monitoring trends. Change in GVA per head has improved significantly for Suffolk Coastal – in the 2010 report, the district (and all other Suffolk areas) were in the lowest quartile nationally. The latest figures (1997-2007) now put us well above the national median.



Note: The chart displays the national ranking converted to a percentile score (The national average is always 50. Results above 50 (i.e. on the outside of the profile) are above the national median and those towards the centre are below the national median).

For this profile, it is better to score highly on each indicator (i.e. have a shape towards the outer edges).

Economic change (2009)

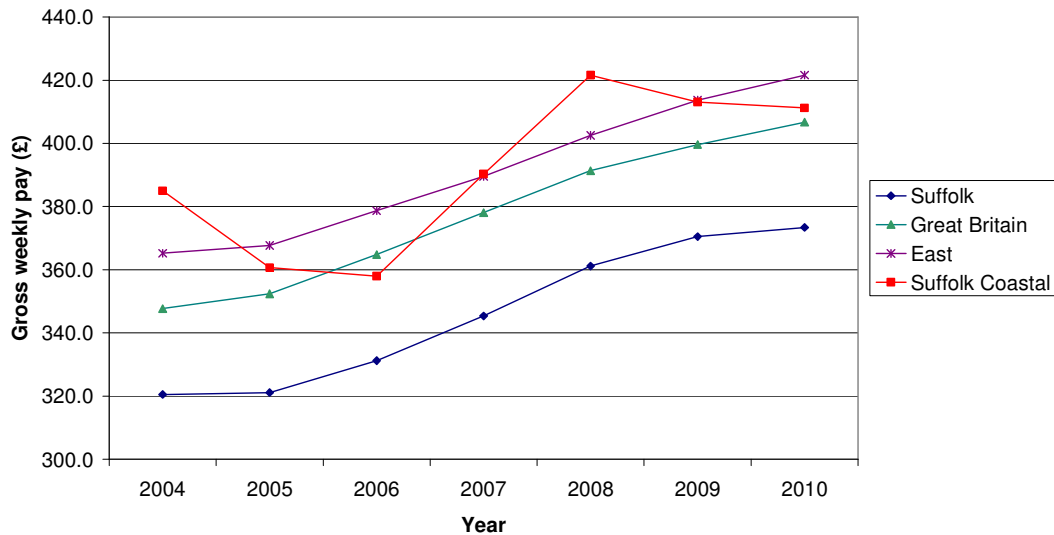


Source: Local Knowledge; Annual Business Inquiry

Long-term change in the total number of employees (by workplace) in relation to the national average (100).

Earnings

Gross weekly pay (median) – all residents



Source: Annual survey of hours and earnings, ONS via nomis.

Gross total median earnings in the district (i.e. part time as well as full time workers) are significantly above average for Suffolk and slightly above the Great Britain figure. Earnings in the district remain significantly above the County average, and comparable with national earnings. In Suffolk Coastal, the trend appears to be a gradual decline, while the East of England and Great Britain show steady growth.

Median weekly earnings for full-time workers

	Suffolk Coastal		Suffolk		East		Great Britain	
	workplace	resident	workplace	resident	workplace	resident	workplace	resident
2007	£498.30	£492.40	£419.20	£428.60	£450.00	£479.90	£458.60	£460.00
2008	£427.30	£531.20	£356.59	£450.80	£375.40	£499.00	£479.10	£480.00
2009	£507.60	£494.20	£440.30	£453.50	£479.10	£509.40	£490.20	£491.00
2010	£522.00	£515.20	£460.00	£478.10	£488.70	£523.30	£500.40	£501.80

Source: Annual Survey of Hours and Earnings

After a decline in workplace earnings across the local area (district, county and region), workplace earnings have grown steadily, with district workplace earnings well above the other areas. Resident earnings in the district have partially recovered from the fall in 2009, and are higher than county and GB figures.

Suffolk Coastal is unusual as workplace earnings are higher than resident earnings. Causes may include:

- employers such as BT are located near the edge of the district and employees may commute from other areas,
- poor transport links from Suffolk Coastal may mean residents are less likely to be commuting long distances to centres of employment (e.g. into London or Cambridge),
- residents may lack the skills and qualifications required by local businesses,
- possible lack of appropriate affordable housing or suitable transport, or
- people commuting from Suffolk Coastal may be in low-paid jobs.

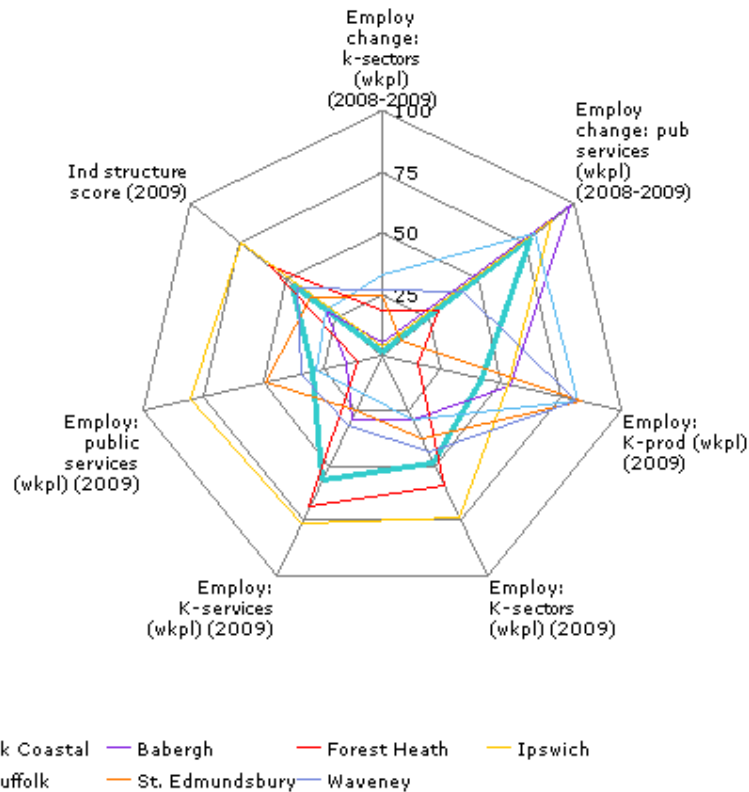
Industrial structure

This looks at workplace employment in knowledge sectors as well as the public sector. Performance on the report card has fallen slightly (by a grade), reflecting the relatively low proportion of public sector jobs in the area (24% against Great Britain 28%), and the decline in the proportion of knowledge sector jobs (fell by 19% against a GB average of -1.5%) according to survey data.

Areas with the highest proportion of knowledge sector employment are scattered. This may be because there is relatively low employment in each area, and so knowledge sectors are more visible (for example, Sizewell power station is the largest employer in that area). It may also be caused by large numbers of small and micro-businesses in the sector. The area of low-scoring wards in south Felixstowe is probably because the Port of Felixstowe is the major employer in the area.

As with the 2010 profile, the map shows that Suffolk Coastal's performance on industrial structure are against the trend for coastal and sparsely populated rural areas.

State of the District Report 2011: Suffolk Coastal



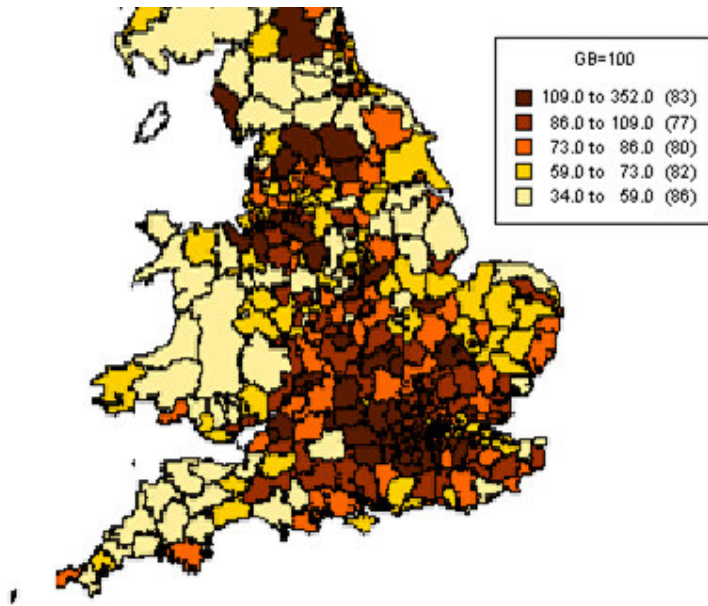
Note: The chart displays the national ranking converted to a percentile score (The national average is always 50. Results above 50 (i.e. on the outside of the profile) are above the national median and those towards the centre are below the national median).

For this profile, it is better to score highly (i.e. be towards the outer edges) on:

- Employment in k (knowledge) services, sectors and production – showing higher levels of employment in these fields
- Employment change in k (knowledge) sectors – this shows growth in jobs in knowledge sectors

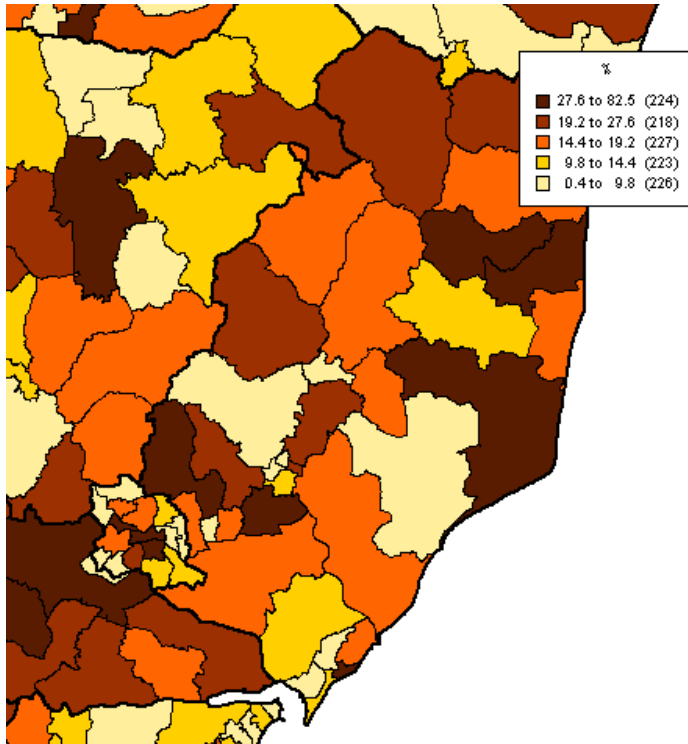
Industrial structure score (2009)

An index of the proportion of people working in businesses in “knowledge-driven” sectors. It is workplace based. The GB average is 100.



Source: Local Knowledge; Annual Business Inquiry

Proportion of employment in Knowledge-driven sectors (2008)



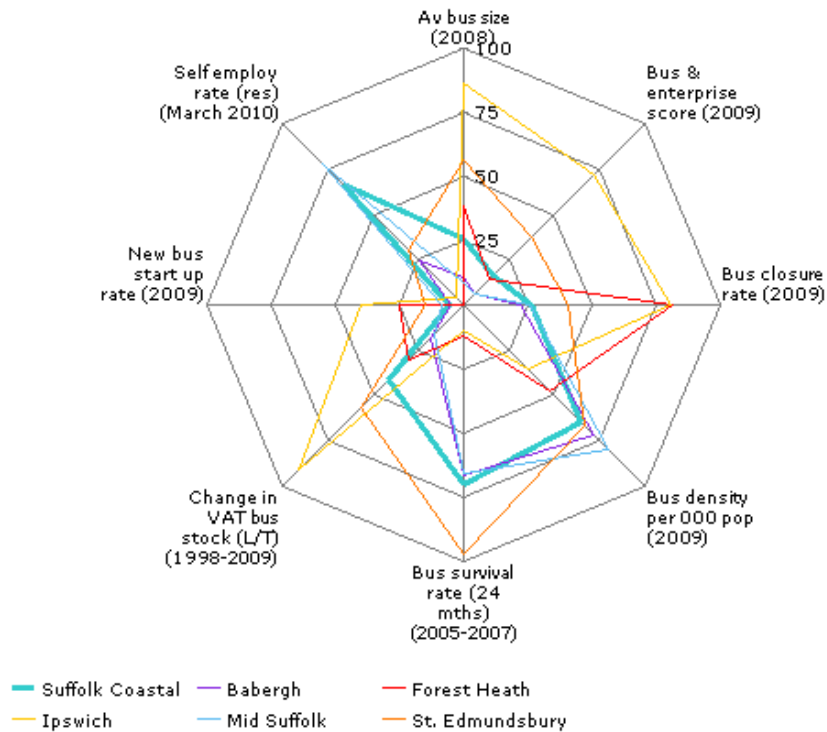
Source: Local Knowledge; Annual Business Inquiry

Businesses

Summary

Suffolk Coastal continues to have a very high proportion of self-employed residents, reflected by the below average business size. The shape of the spider chart remains relatively unchanged for the district compared to the 2010 report, although the overall business and enterprise score fell slightly.

The business start-up rate remains very low. The business and enterprise score, and the new business formation rate continue to be broadly in line with areas away from central England and cities (see maps below).



Note: The chart displays the national ranking converted to a percentile score (The national average is always 50. Results above 50 (i.e. on the outside of the profile) are above the national median and those towards the centre are below the national median).

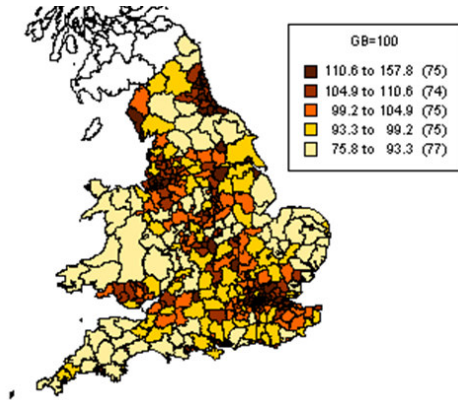
For this profile, it is better to score highly (i.e. be towards the outer edges) on:

- Changes in VAT business stock
- New business formation rate
- Business and enterprise score

It is better to score low (i.e. be towards the centre) on:

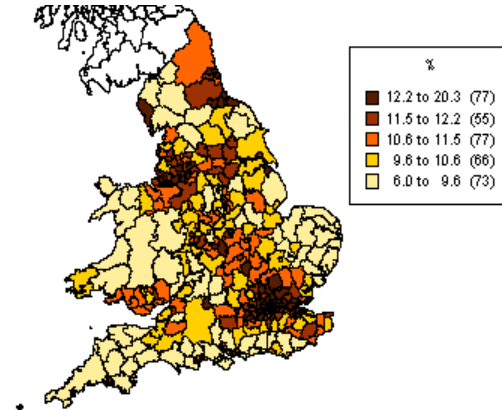
- Business closure rate

Business and enterprise score (2009)



Source: Local Knowledge; Business start-ups and closures: VAT registrations and deregistrations

New business formation rate (2009)



Source: Local Knowledge; Business Demography; Enterprise Births & Deaths

Business size

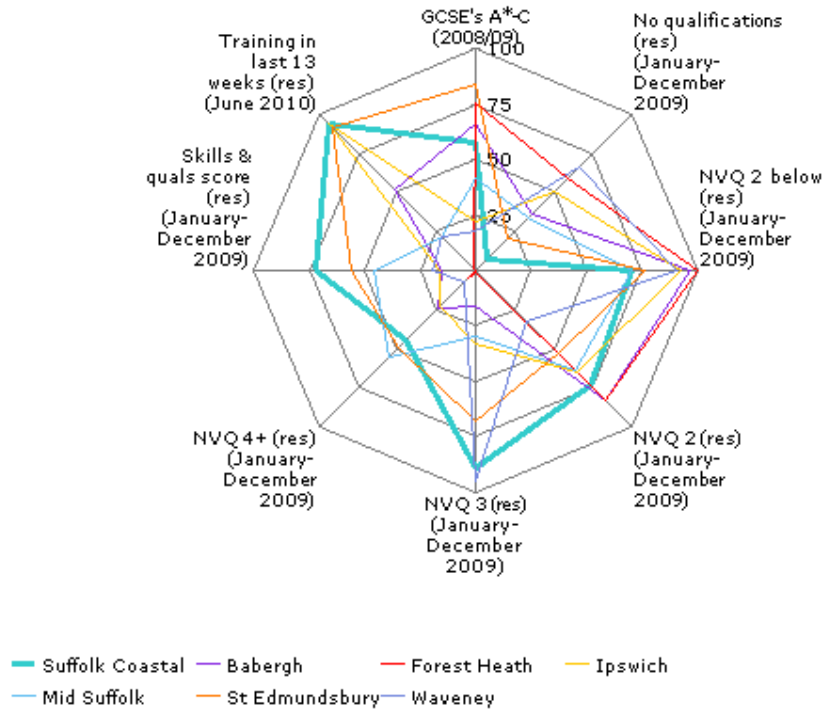
The following table references a different data set to the chart on the previous page and should not be used for a direct comparison.

Area	Total number	% VAT / PAYE registered businesses by number of employees			
		0-4 (%)	5-9 (%)	10-19 (%)	20+ (%)
Babergh	4,335	72.5	13.0	7.8	6.6
Forest Heath	2,610	63.6	18.2	9.6	8.6
Ipswich	4,670	60.6	17.8	9.3	12.3
Mid Suffolk	5,030	74.9	12.3	6.6	6.3
St. Edmundsbury	4,975	65.2	15.9	8.8	10.1
Suffolk Coastal	5,850	69.7	15.1	8.2	6.9
Waveney	4,280	65.4	17.3	8.6	8.6
East	253,120	69.7	14.4	7.6	8.3
England	183,840	68.2	14.8	8.2	8.8

Source: Neighbourhood Statistics, Inter Departmental Business Register (IDBR), March 2010

Skills & qualifications

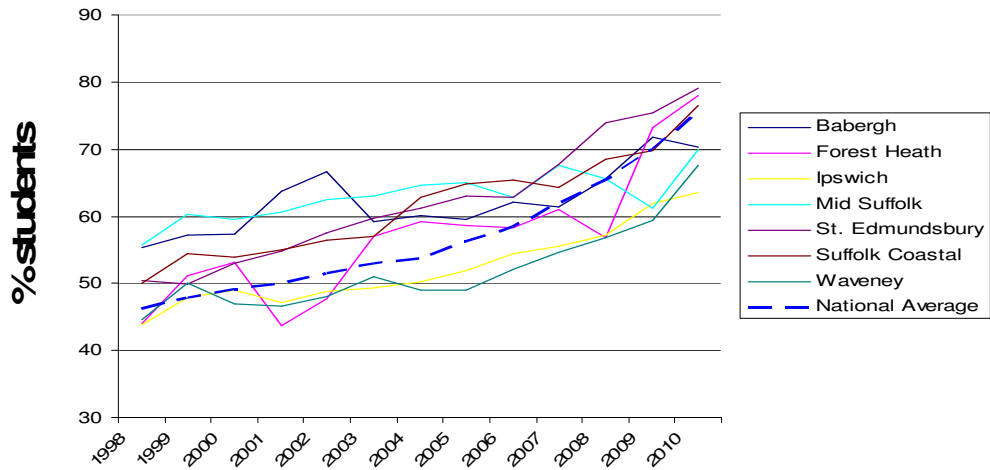
Performance remains high, with significant improvement against other districts on “training in the last 13 weeks” (we were bottom quartile last year), and NVQ level 2 or below. Only 6% of the resident population are reported to have no qualifications.



Note: The chart displays the national ranking converted to a percentile score (The national average is always 50. Results above 50 (i.e. on the outside of the profile) are above the national median and those towards the centre are below the national median).

For this profile, it is better to score highly on each indicator (i.e. have a shape towards the outer edges), except for “no qualifications”.

Proportion of students gaining 5+ GCSEs (A*-C)

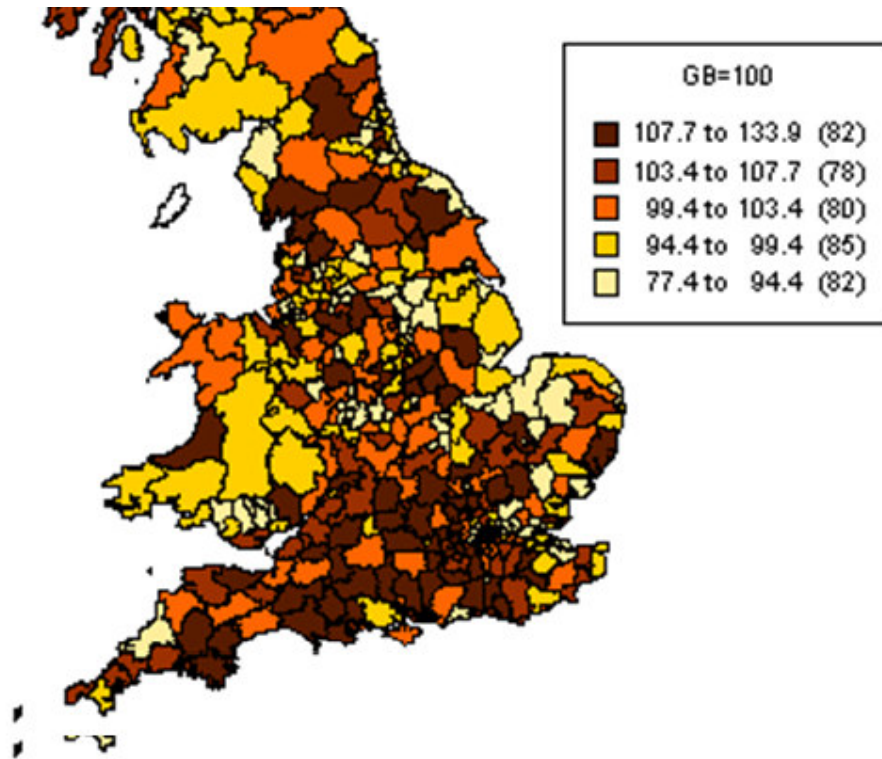


	Babergh	Forest Heath	Ipswich	Mid Suffolk	St. Edmundsbury	Suffolk Coastal	Waveney	National Average
1998	55.3	44.1	43.9	55.8	50.4	50.0	44.6	46.3
1999	57.2	51.1	47.9	60.3	49.9	54.5	50.0	47.9
2000	57.3	53.1	49.0	59.5	53.0	53.9	46.9	49.2
2001	63.7	43.6	47.2	60.6	54.8	54.9	46.6	50.0
2002	66.6	47.7	48.8	62.5	57.5	56.5	48.1	51.5
2003	59.1	56.9	49.4	63.0	59.8	57.0	50.9	52.9
2004	60.1	59.2	50.2	64.7	61.2	62.9	49.0	53.7
2005	59.5	58.7	51.9	65.0	63.1	64.9	48.9	56.3
2006	62.1	58.3	54.4	62.8	62.9	65.4	52.1	58.5
2007	61.4	61.0	55.5	67.5	67.8	64.3	54.6	62.0
2008	65.6	56.8	57.1	65.6	73.9	68.5	56.8	65.3
2009	71.7	73.2	61.9	61.1	75.4	69.8	59.4	70.0
2010	70.3	77.9	63.6	70.0	79.1	76.5	67.5	75.4

Source: Local Knowledge; GCSE results (LAD level) 2010: DfE GCSE and equivalent results in England, 2009/10 (revised)

Skills and qualifications score

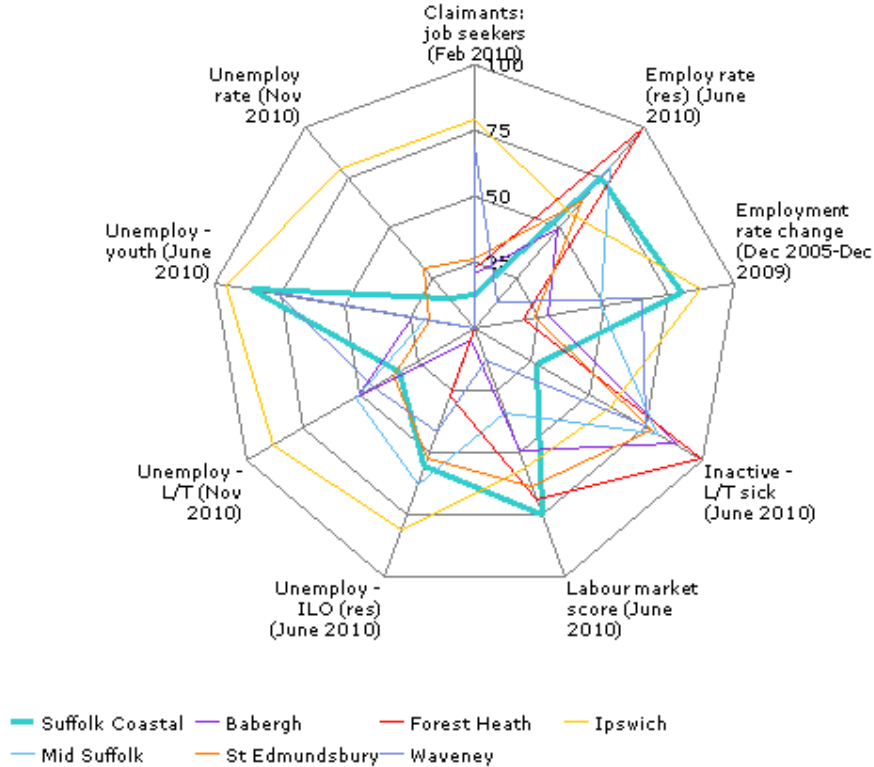
(January - December 2009)



Source: Local Knowledge; Annual Population Survey

Labour market

Youth (16-24) unemployment is very high in Suffolk Coastal (28.9% June 2010), in contrast to March 2009 (the data for last year), when we were one of the best performing districts. The figure remained high for the first six months of 2010, suggesting that it may be a new trend rather than a seasonal change.



Note: The chart displays the national ranking converted to a percentile score (The national average is always 50. Results above 50 (i.e. on the outside of the profile) are above the national median and those towards the centre are below the national median).

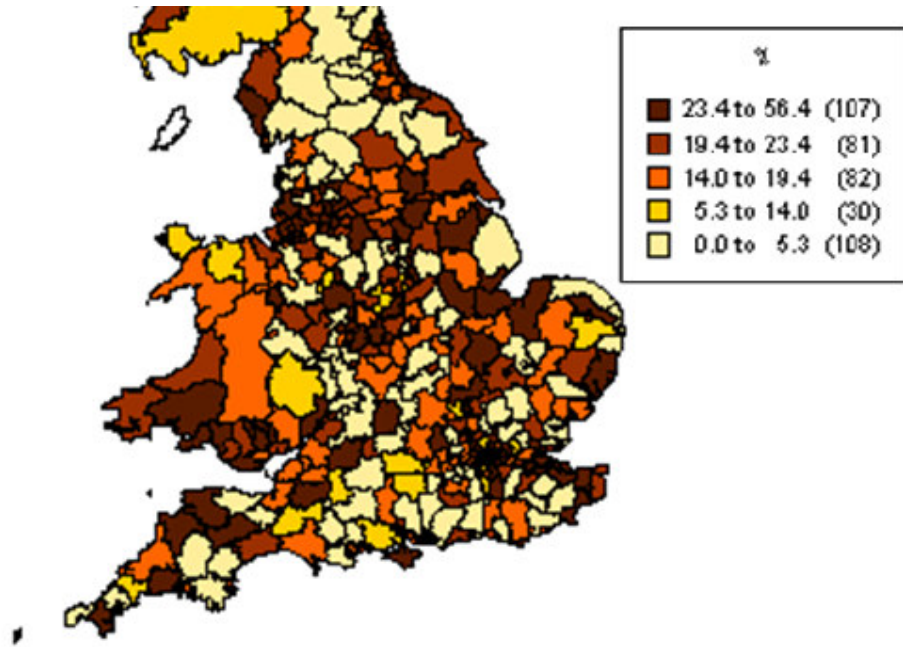
For this profile, it is better to score highly (i.e. be towards the outer edges) on:

- Changes in employment rate
- Employment rate
- Labour market score

It is better to score low (i.e. be towards the centre) on:

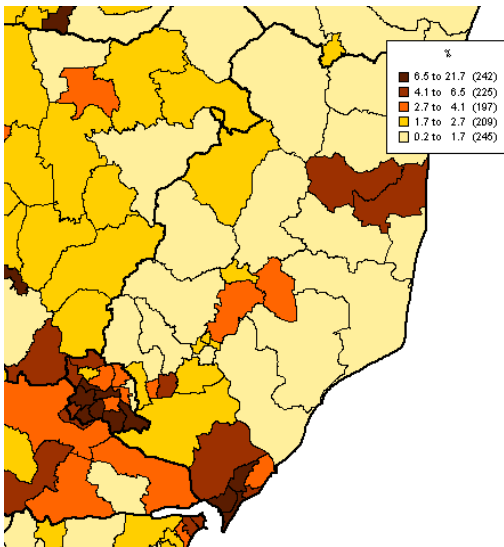
- Unemployment
- Unemployment - youth
- Inactive – long term sick

Proportion of 16-24 year olds who are unemployed (March 2010)



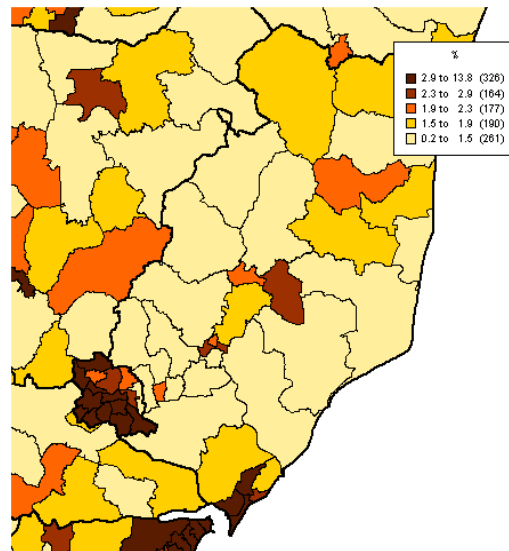
Source: Local Knowledge; Annual Population Survey

Share of District unemployment (2010)



Source: Local Knowledge; Claimant count with rates and proportions

Unemployment rate (November 2010)



Source: Local Knowledge; Claimant count with rates and proportion

Society Vision

The Local Strategic Partnership (LSP) vision for society includes:

- “communities are safe, cohesive and inclusive, and local people are enabled to respond to the identified needs of their area to ensure our communities are vibrant, balanced and sustainable”
- “everyone in the district has the opportunity to live a healthier lifestyle and living in a rural area is not a barrier to achieving that healthy lifestyle”
- “all of our young people are able to access the same level of support, activities and services, including education and training, regardless of where they live”

Quality of life indicators

Trend	Indicator	Suffolk Coastal					Eastern					National					
		2010-11	2009-10	2008-09	2007-08	2006-07	2010-11	2009-10	2008-09	2007-08	2006-07	2010-11	2009-10	2008-09	2007-08	2006-07	
		Society															
▼	Infant mortality			3.6	4.4	4.2				4.1	4.2				4.8	4.9	5.00
▶	Life expectancy at birth (m)		80.6	80.6	80.3	79.8		79.3	78.9	78.7	78.3		78.3	77.9	77.7	77.3	
▶	Life expectancy at birth (f)		83.8	83.8	83.4	82.9		83.0	82.8	82.6	82.3		82.3	82.0	81.8	81.6	
▼	Teenage pregnancy conceptions under 18 per 1,000 females 15-17			20.8	22.1	24.6			32.6	33.1	33.3			41.2	41.9	40.9	
▲	Domestic burglaries per 1,000 households		4.3	2.6	4.5	4.1			9.6	9.5	9.1			12.5	12.8	13.4	
▼	Violent offences committed per 1,000 population		7.4	7.8	9.4	9.8			12.2	13.2	14.6			16.0	17.6	19.3	
▼	Theft of a vehicle per 1,000 population		0.6	0.7	0.8	1.1			21.1	2.6	2.8			2.7	3.2	3.6	
▼	Sexual offences per 1,000 population		0.6	0.6	0.6	0.8			0.8	0.8	0.9			0.9	1.0	1.1	

Source: various, updated January 2011.

Trend arrows show direction only – the underlying colour indicates improvement (green), no significant change (orange) or worsening performance (red).

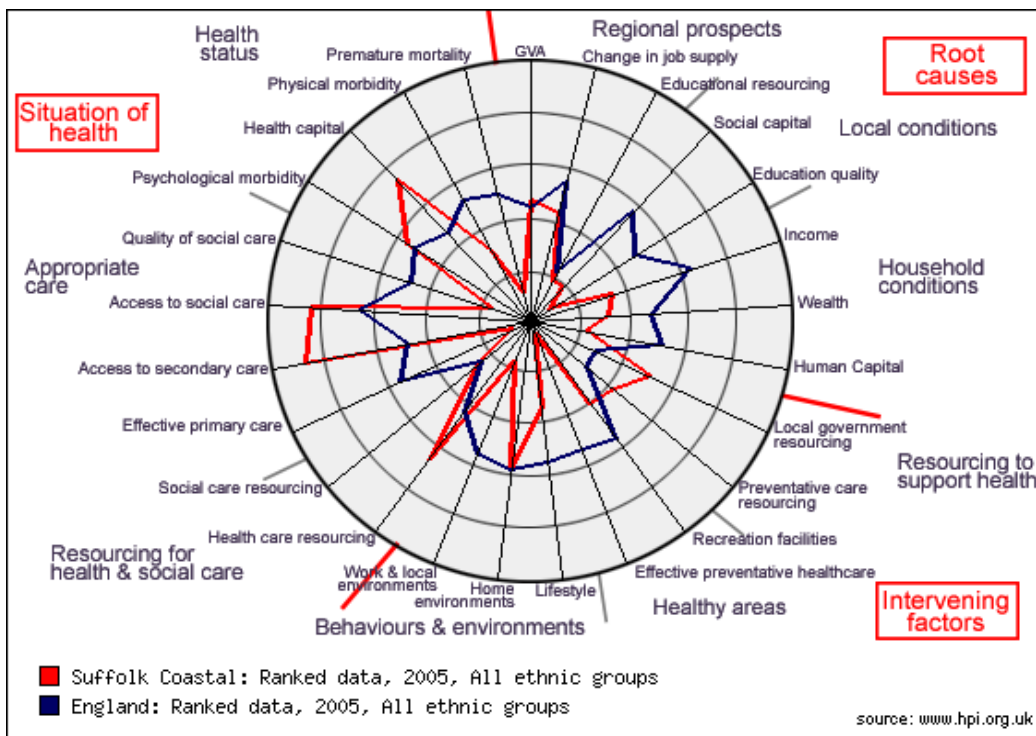
Summary

Our report card remains unchanged – apart from improved performance for the proportion of residents in knowledge work. Inequality remains an issue when compared to the rest of Suffolk. Levels of prosperity are relatively high, and deprivation is relatively low – although the figures can mask hidden deprivation.

Suffolk Coastal is in the top performing 20% of districts locally, regionally and nationally for good health and low crime. However, access to secondary care (a ratio of the number of operations such as joint replacement, cataract removal to population in need) and to social care (social services staff and care places for older people) has been assessed as poor.

Health

Access to secondary care (a ratio of the number of operations such as joint replacement, cataract removal to population in need) and to social care (social services staff and care places for older people) have been assessed as poor. The number of children reported to be engaged in a minimum of two hours PE & sport at school is lower than the county, regional and national averages.



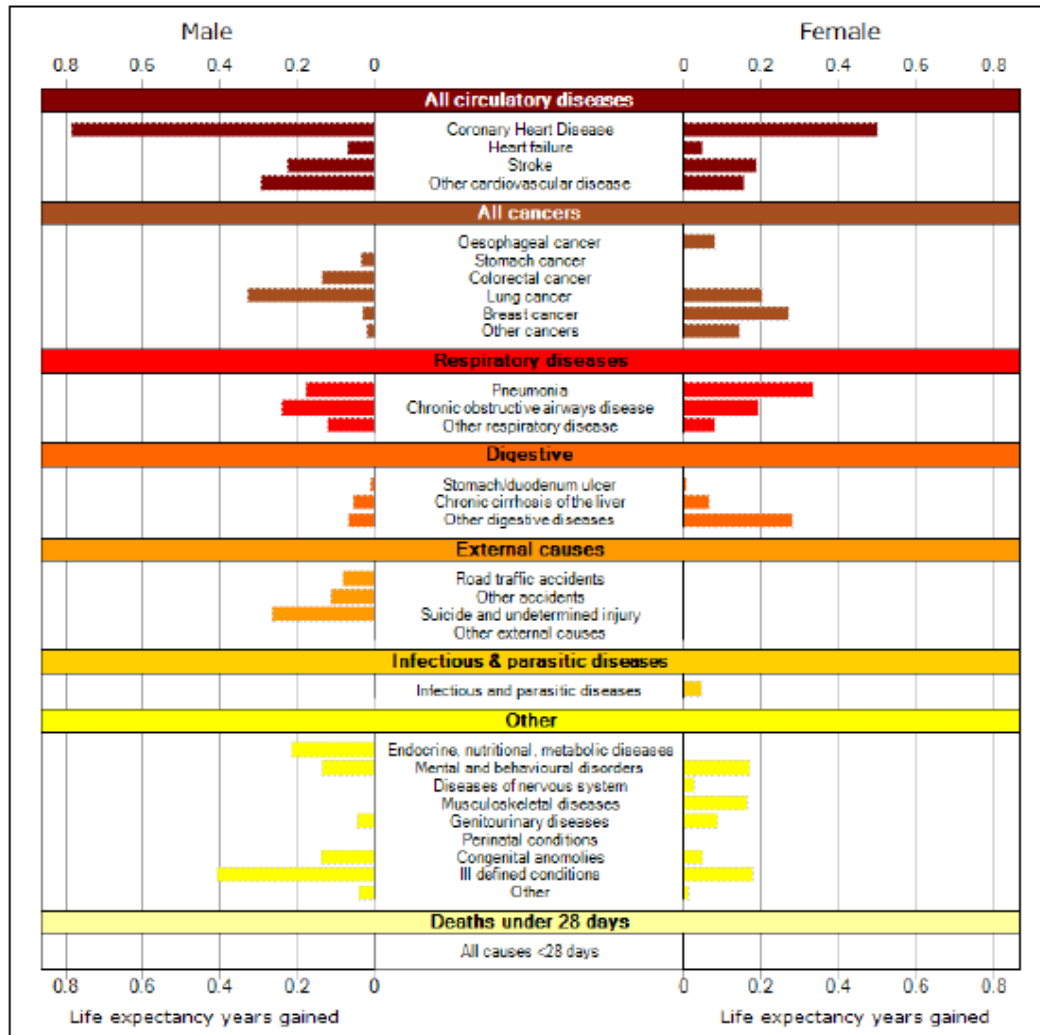
Source: 2010 Annual Public Health Report for Suffolk

Note: For this chart it is better to score low (i.e. be towards the centre) on all measures:

Life expectancy

Life expectancy at birth is slightly higher for Suffolk Coastal residents than the region or nationally.

Deaths from selected causes – Suffolk Coastal residents, 2001-2005



Source: Annual Public Health Report for Suffolk 2010

Reducing mortality from coronary heart disease and suicide in men in the most deprived fifth of the population would achieve the greatest gains. In the same group, reducing mortality from stroke and other cardiovascular disease in women would make a difference.

Health Profile

The analysis of health data by ERPHO shows that Suffolk Coastal is performing well in comparison to other areas for most health indicators. However, the percentage of 5-16 year olds who spent at least two hours per week on sport is significantly worse than the England and regional average.

Health summary for Suffolk Coastal

42UG

The chart below shows how the health of people in this area compares with the rest of England. This area's result for each indicator is shown as a circle. The average rate for England is shown by the red line, which is always at the centre of the chart. The range of results for all local areas in England is shown as a grey bar. A red circle means that this area is significantly worse than England for that indicator; however, a green circle may still indicate an important public health problem.

- Significantly worse than England average
- Not significantly different from England average
- Significantly better than England average
- No significance can be calculated



* In the South East Region this represents the Strategic Health Authority average

Domain	Indicator	Local No. Per Year	Local Value	Eng Avg	Eng Worst	England Range	Eng Best
Our communities	1 Deprivation	0	0.0	19.9	89.2	[Bar]	0.0
	2 Children in poverty	2535	11.4	22.4	66.5	[Bar]	6.0
	3 Statutory homelessness	16	0.30	2.48	9.84	[Bar]	0.00
	4 GCSE achieved (5A*-C inc. Eng & Maths)	662	55.8	50.9	32.1	[Bar]	76.1
	5 Violent crime	972	7.8	16.4	36.6	[Bar]	4.8
	6 Carbon emissions	830	6.7	6.8	14.4	[Bar]	4.1
Children's and young people's health	7 Smoking in pregnancy	160	14.5	14.6	33.5	[Bar]	3.8
	8 Breast feeding initiation	800	72.2	72.5	39.7	[Bar]	92.7
	9 Physically active children	7135	48.7	49.6	24.6	[Bar]	79.1
	10 Obese children	85	7.5	9.6	14.7	[Bar]	4.7
	11 Tooth decay in children aged 5 years	n/a	0.8	1.1	2.5	[Bar]	0.2
	12 Teenage pregnancy (under 18)	49	20.7	40.9	74.8	[Bar]	14.9
Adult health and lifestyle	13 Adults who smoke	n/a	16.5	22.2	35.2	[Bar]	10.2
	14 Binge drinking adults	n/a	17.7	20.1	33.2	[Bar]	4.6
	15 Healthy eating adults	n/a	35.0	28.7	18.3	[Bar]	48.1
	16 Physically active adults	n/a	13.2	11.2	5.4	[Bar]	16.6
	17 Obese adults	n/a	19.2	24.2	32.8	[Bar]	13.2
Disease and poor health	18 Incidence of malignant melanoma	19	13.2	12.6	27.3	[Bar]	3.7
	19 Incapacity benefits for mental illness	1095	15.4	27.6	58.5	[Bar]	9.0
	20 Hospital stays for alcohol related harm	1624	881	1580	2960	[Bar]	784
	21 Drug misuse					[Bar]	
	22 People diagnosed with diabetes	4782	3.81	4.30	6.72	[Bar]	2.69
	23 New cases of tuberculosis	3	2	15	110	[Bar]	0
	24 Hip fracture in over-65s	169	455.7	479.2	643.5	[Bar]	273.6
Life expectancy and causes of death	25 Excess winter deaths	51	12.1	15.6	26.3	[Bar]	2.3
	26 Life expectancy - male	n/a	80.6	77.9	73.6	[Bar]	84.3
	27 Life expectancy - female	n/a	83.8	82.0	78.8	[Bar]	88.9
	28 Infant deaths	4	3.63	4.84	8.87	[Bar]	1.08
	29 Deaths from smoking	180	138.6	206.8	360.3	[Bar]	118.7
	30 Early deaths: heart disease & stroke	87	52.3	74.8	125.0	[Bar]	40.1
	31 Early deaths: cancer	156	96.4	114.0	164.3	[Bar]	70.5
	32 Road injuries and deaths	66	53.3	51.3	167.0	[Bar]	14.6

Indicator Notes

1 % of people in this area living in 20% most deprived areas of England 2007 2 % of children living in families receiving means-tested benefits 2007 3 Crude rate per 1,000 households 2008/09 4 % at Key Stage 4 2008/09 5 Recorded violence against the person crimes crude rate per 1,000 population 2008/09 6 Total end user CO₂ emissions per capita (tonnes CO₂ per resident) 2007 7 % of mothers smoking in pregnancy where status is known 2008/09 8 % of mothers initiating breast feeding where status is known 2008/09 9 % of year 1-13 pupils who spend at least 3 hours per week on high quality PE and school sport 2008/09 10 % of school children in reception year 2008/09 11 Weighted mean number of teeth per 5 yr old child sampled that were actively decayed, missing or filled 2007/08 12 Under-18 conception rate per 1,000 females aged 15-17 (crude rate) 2006-2008 (provisional) 13 % adults, modelled estimate using Health Survey for England 2006-2008 14 % adults, modelled estimate using Health Survey for England 2007-2008 15 % adults, modelled estimate using Health Survey for England 2006-2008 16 % aged 16+ 2008/09 17 % adults, modelled estimate using Health Survey for England 2006-2008 18 Directly age standardised rate per 100,000 population under 75 2004-2006 19 Crude rate per 1,000 working age population 2008 20 Directly age and sex standardised rate per 100,000 population 2008/09 (rounded) 21 New Problematic Drug User estimates were not available in time for inclusion 22 % of people on GP registers with a recorded diagnosis of diabetes 2008/09 23 Crude rate per 100,000 population 2006-2008 24 Directly age-standardised rate per 100,000 population for emergency admission 2008/09 25 Ratio of excess winter deaths (observed winter deaths minus expected deaths based on non-winter deaths) to average non-winter deaths 1.08.05- 31.07.08 26 At birth, 2006-2008 27 At birth, 2006-2008 28 Rate per 1,000 live births 2006-2008 29 Per 100,000 population age 35+, directly age standardised rate 2006-2008 30 Directly age standardised rate per 100,000 population under 75, 2006-2008 31 Directly age standardised rate per 100,000 population under 75, 2006-2008 32 Rate per 100,000 population 2006-2008

More indicator information is available in The Indicator Guide: www.healthprofiles.info For information on your area contact your regional PHO: www.apho.org.uk

You may use this profile for non-commercial purposes as long as you acknowledge where the information came from by printing 'Source: APHO and Department of Health. © Crown Copyright 2010'.

Source: Health Profile 2010, APHO and Department of Health

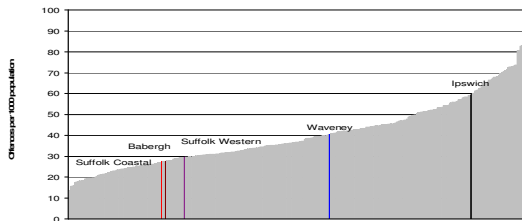
Crime

Crime rates

As last year, Suffolk Coastal is in the best 20% of districts in Suffolk, the Eastern region and nationally.

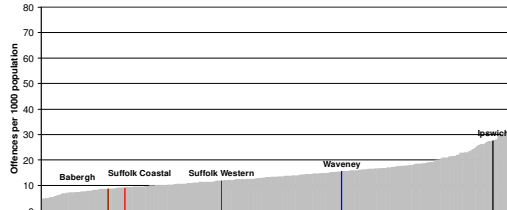
The following charts all show the crime rate – i.e. offences per 1,000 population – for 2009-10

Recorded crime BCS comparator offences



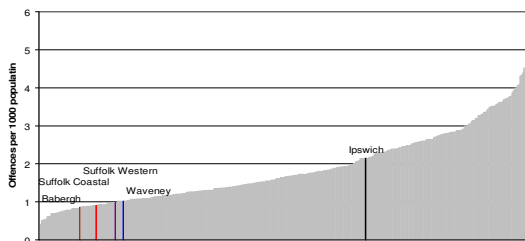
Source: British Crime Survey, Home Office, March 2010.

Violence against the person offences



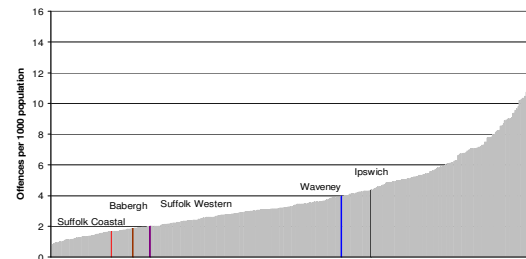
Source: British Crime Survey, Home Office, March 2010.

Theft of a motor vehicle offences



Source: British Crime Survey, Home Office, March 2010.

Domestic burglary offences



Source: British Crime Survey, Home Office, March 2010.

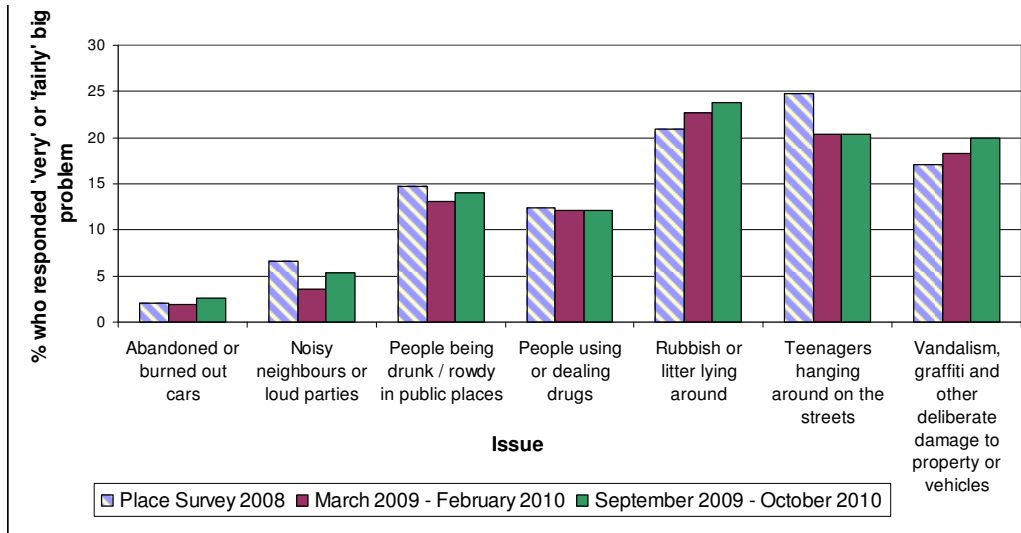
Anti-social behaviour

The perception of anti-social behaviour was raised as a concern in Suffolk Coastal 2021. Suffolk Coastal residents perceived parents not taking responsibility for the behaviour of their children (43%) and teenagers hanging round the streets (39%) as the two biggest problems in their area in the Best Value General User Satisfaction Survey 2006.

The chart below compares the results of recent surveys for Suffolk Police to the Place Survey information from 2008 – although the data is not directly comparable, it is interesting to note that respondents were most concerned about litter, and then teenagers and vandalism etc.

State of the District report: Suffolk Coastal

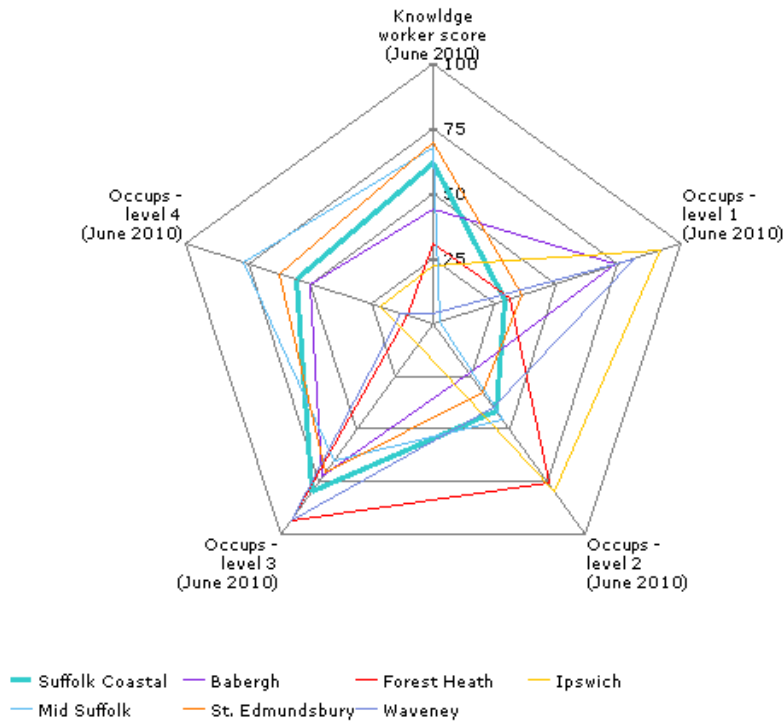
Perceptions of anti-social behaviour



Source: Maven Research for Suffolk Police, 2010

Knowledge workers

The proportion of Suffolk Coastal residents identified as “knowledge workers” (professionals and managers) has improved significantly when compared to other districts (we were ranked in the lowest 40% of districts in 2009). However, this may be because there has been a significant decline elsewhere, as the rate of growth is not high.



Note: The chart displays the national ranking converted to a percentile score (The national average is always 50. Results above 50 (i.e. on the outside of the profile) are

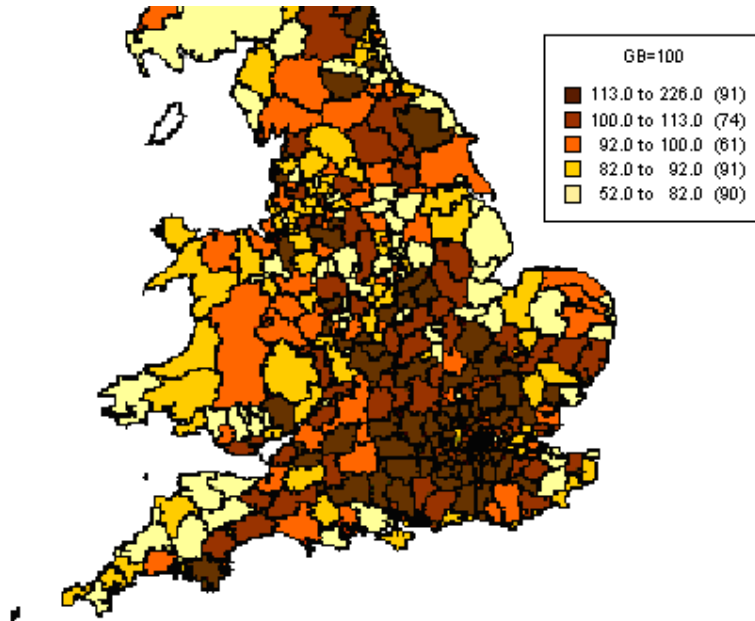
State of the District report: Suffolk Coastal

above the national median and those towards the centre are below the national median).

For this profile, it is better to score highly (i.e. be towards the outer edges) on:

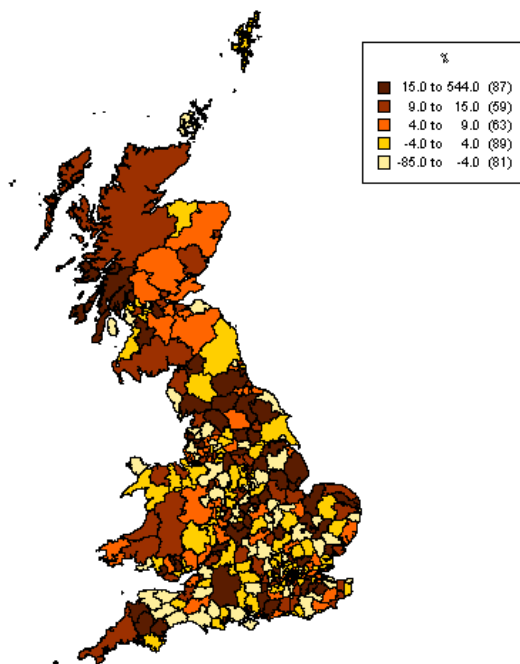
- Knowledge worker score
- Higher levels of occupations

Knowledge worker score (June 2010)



Source: Local Knowledge; Annual Population Survey

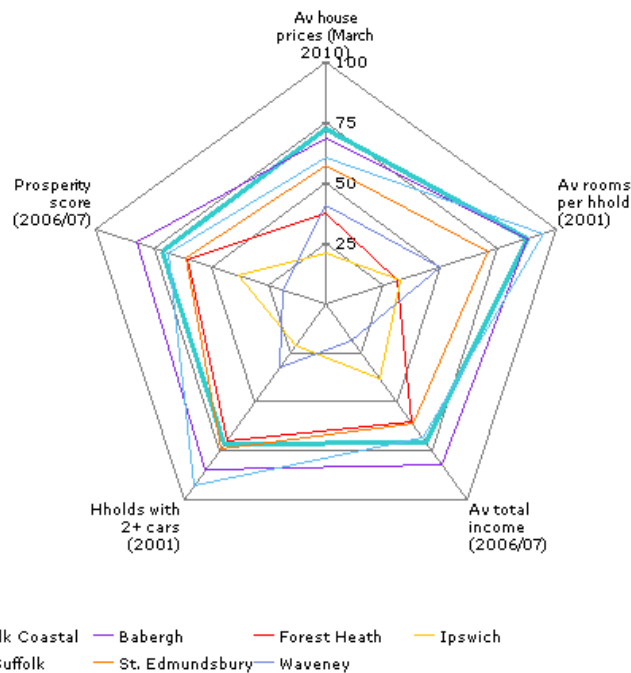
Change in Knowledge workers amongst employed workforce (residence based) (2005-2009 Dec)



Source: Local Knowledge; Annual Population Survey

Prosperity

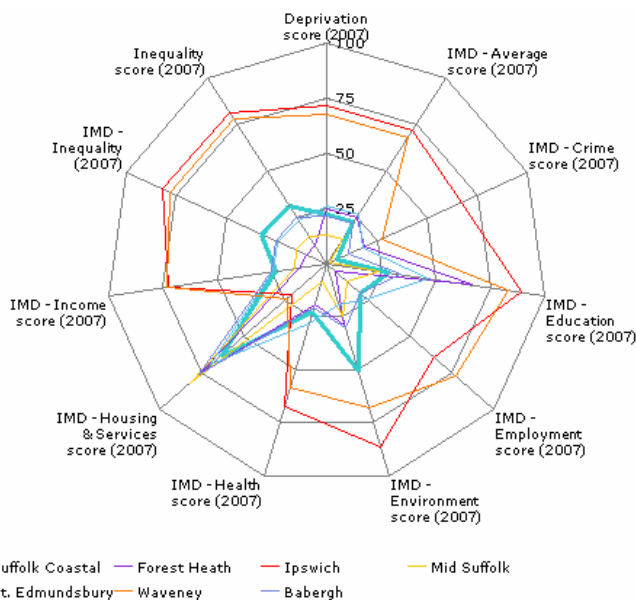
The average house price indicator shows that, although prices have fallen, they have been in line with national changes, and therefore our position has not changed significantly.



Note: The chart displays the national ranking converted to a percentile score (The national average is always 50. Results above 50 (i.e. on the outside of the profile) are above the national median and those towards the centre are below the national median).

Deprivation & inequality

The Index of Multiple Deprivation (IMD) indicators have not been updated since 2007.

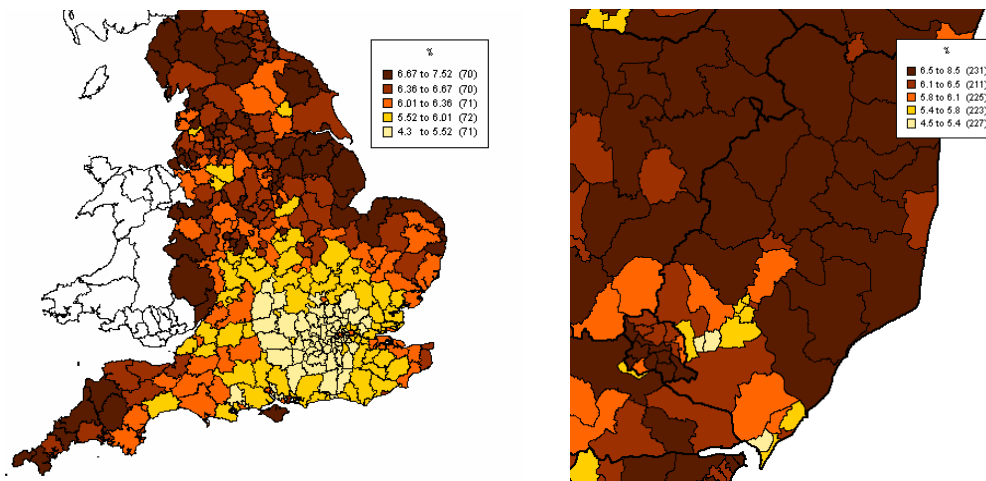


State of the District report: Suffolk Coastal

Note: The chart displays the national ranking converted to a percentile score (The national average is always 50. Results above 50 (i.e. on the outside of the profile) are above the national median and those towards the centre are below the national median).

For this profile, it is better to score low on each indicator (i.e. have a shape towards the centre).

Households in Fuel Poverty on a full income (% , 2008)



Source: Local Knowledge; www.fuelpovertyindicator.org.uk

The proportion of Households in Fuel Poverty on a full income: A household is in fuel poverty if, in order to maintain a satisfactory heating regime and cover other normal fuel costs, it would be required to spend more than 10% of its income on all household fuel use. Full Income in this definition includes Housing Benefit, Income Support for Mortgage Interest, and Council Tax Benefit.

Environment

LSP Vision

- “Suffolk Coastal is a district that is supporting the countywide goal of becoming the ‘greenest county’, is equipped to meet the challenges of climate change and on target to meet the countywide 2025 targets of a 60% reduction in CO2 emissions and a climate-resilient Suffolk”
- “all the people who live in Suffolk Coastal have equal access to services and the district is an area of excellence for rural accessibility”

Local Futures also include access to services and housing affordability within the Environment category.

Quality of life indicators

Trend	Indicator	Suffolk Coastal					Eastern					National				
		2010-11	2010-11	2010-11	2010-11	2010-11	2010-11	2009-10	2008-09	2007-08	2006-07	2010-11	2009-10	2008-09	2007-08	2006-07
Environment																
▼	House price to income ratio		6.61	7.78	7.31	6.97		6.80	7.78	7.88	7.43		6.27	6.94	7.26	6.91
▼	Average annual domestic consumption gas and electricity (kWh)		20,002	21,234	22,269	23,003		19,893	21,284	22,277	22,905		19,536	21,105	22,006	22,698
▼	Volume of household waste collected per head (kg)		390	408	434	462			521		523		457	473	495	508
▲	Percentage diverted from landfill (reused, composted or recycled)		51.8	48.5	42.9	38.3		46.1	44.5	41.2	38.3		39.7	37.6	34.5	30.9
▼	Total CO2 emissions (kt)			833	852	881			39,620	40,162	40,918			430,170	436,821	446,056
▼	CO2 emissions per capita (k/tonnes)			6.7	6.9	7.3			6.9	7.1	7.3			7.0	7.2	7.4

Source: various, updated January 2011.

Trend arrows show direction only – the underlying colour indicates improvement (green), no significant change (orange) or worsening performance (red).

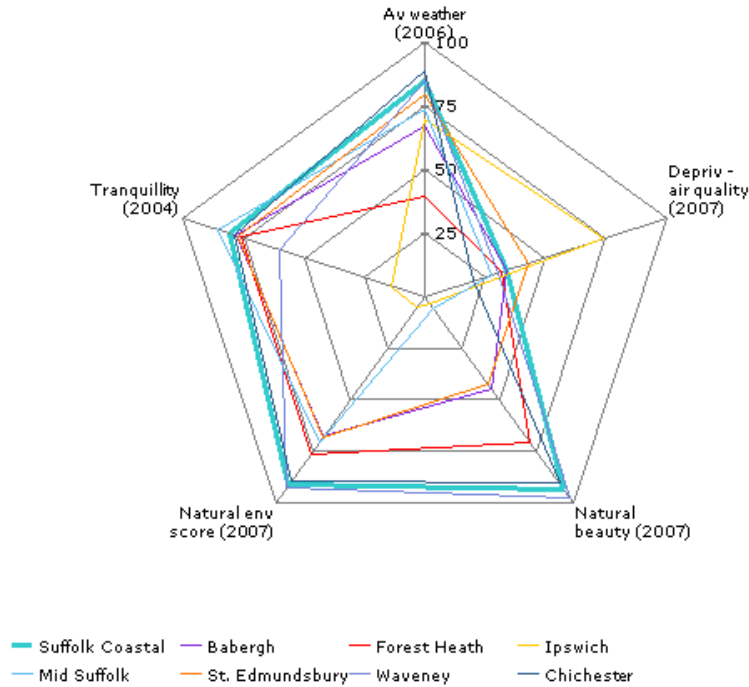
Summary

Performance has improved across all the Quality of Life environment indicators. The volume of household waste collected, and the percentage diverted from landfill figures are particularly noteworthy when compared to national figures. Although annual domestic gas and electricity consumption has fallen year on year, it remains higher than the regional and national average.

The report card shows little change – partly because many of the indicators use census data. Suffolk Coastal is in the best 20% of districts for natural environment in Suffolk, the East of England and nationally. However, for connectivity and services Suffolk Coastal is in the bottom 20% in Suffolk and the bottom 40% regionally or nationally. Housing affordability has worsened, which may be due to the low rate of sales.

Natural Environment

Suffolk Coastal performs well on all environment indicators. Air quality for the District as a whole is average when compared to the rest of England, though worse than some other coastal areas. Higher levels of air pollution are found in the south of the District.

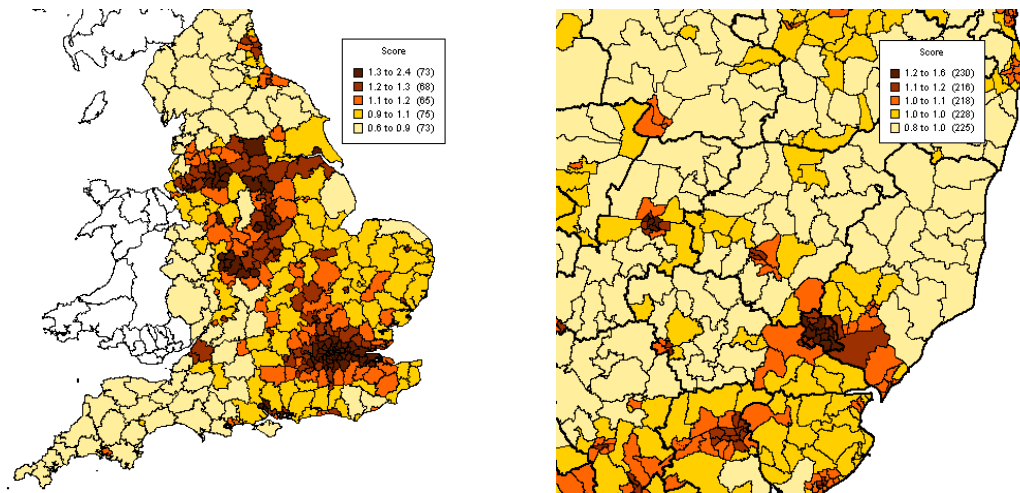


Note: The chart displays the national ranking converted to a percentile score (The national average is always 50. Results above 50 (i.e. on the outside of the profile) are above the national median average and vice-versa below 50)

For this profile, it is better to score high on each indicator (i.e. have a shape towards the outer edges), except air quality.

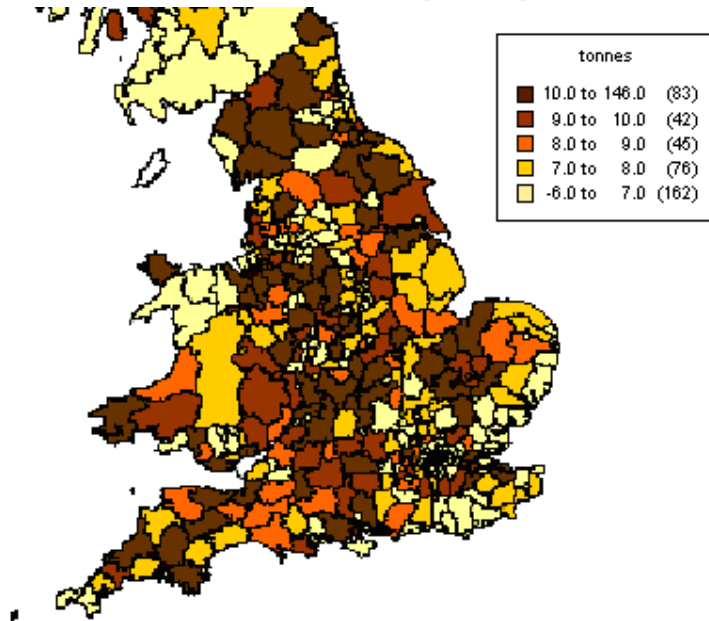
Air quality by district and output area

(IMD 2007 Environment domain underlying indicator) (2007)



Source: Local Knowledge; Indices of Deprivation and Classifications

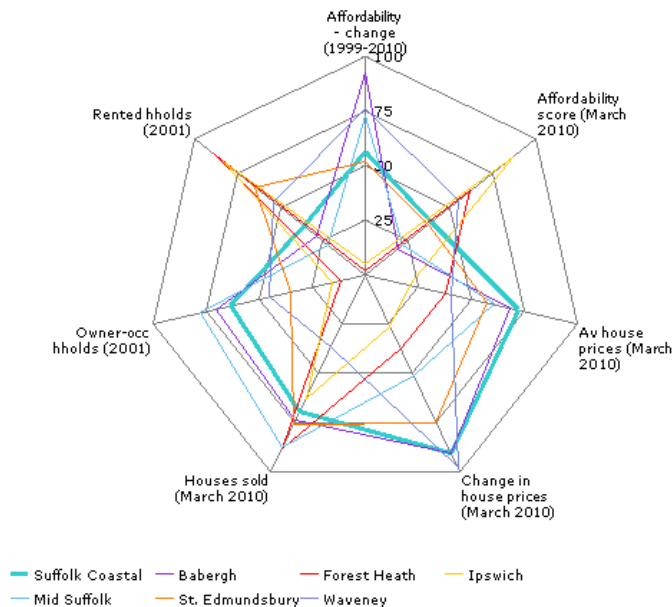
Total carbon dioxide emissions per capita (2008)



Source: Local Knowledge; Emissions of carbon dioxide for local authority areas

Housing affordability

Suffolk Coastal is in the middle 20% of districts for housing affordability within Suffolk and the region. Access to affordable housing remains a challenge, as the recession has slowed projects by commercial developers. However, 107 affordable dwellings were created in 2009/10 and housing associations continue to deliver properties.



Note: The chart displays the national ranking converted to a percentile score (The national average is always 50. Results above 50 (i.e. on the outside of the profile) are above the national median average and vice-versa below 50).

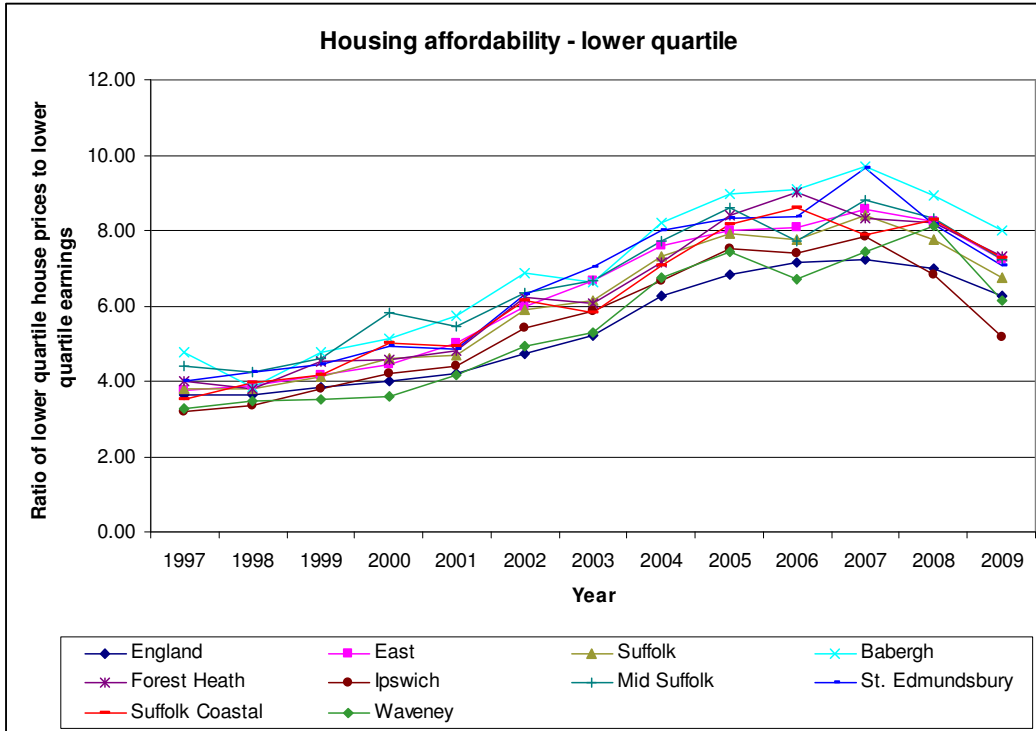
For this profile, it is better to score high (i.e. towards the outer edges) on:

State of the District report: Suffolk Coastal

- Affordability – change
- Affordability score

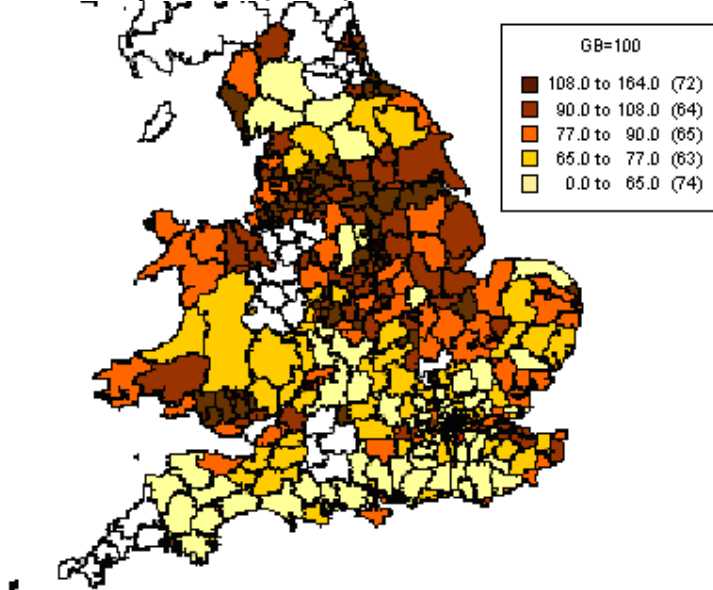
Housing affordability ratio

General affordability ratios can mask greater issues for households on low incomes. This trend data shows how affordable the lowest-priced houses are for those on low incomes. The ratio is slightly worse for people on low incomes than overall figures: 7.99 against 7.78.



Source: Dept for Communities & Local Government, Table 576

Affordability score (2010)



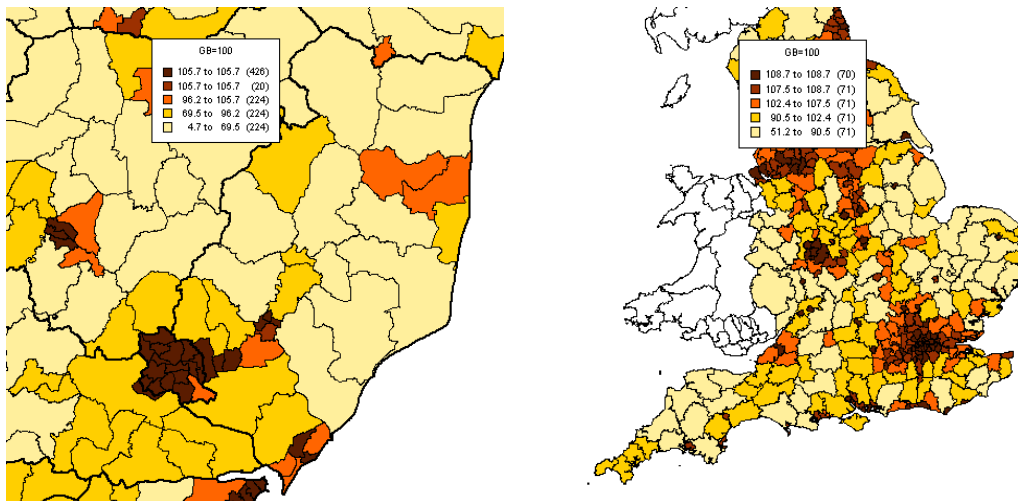
Source: Local Knowledge; Property Prices; Annual Survey of Hours and Earnings

Access to Services

Access to services is usually low for rural and coastal areas, and high for districts that are mainly urban.

This indicator is a composite based on the indexes of the following: households who are a short distance from a public internet access point; supermarket; secondary school; primary school; post office; petrol station; library; jobcentre; doctors; bank/building society; cash point. The higher the figure, the better the access (in comparison to other areas).

Access to services by ward and by district (2008)



Source: Local Knowledge; Rural Services Survey

Households within a short distance* of a service (%) (2008)

*a short distance of the service is 4km, or 2km for a primary school or post office

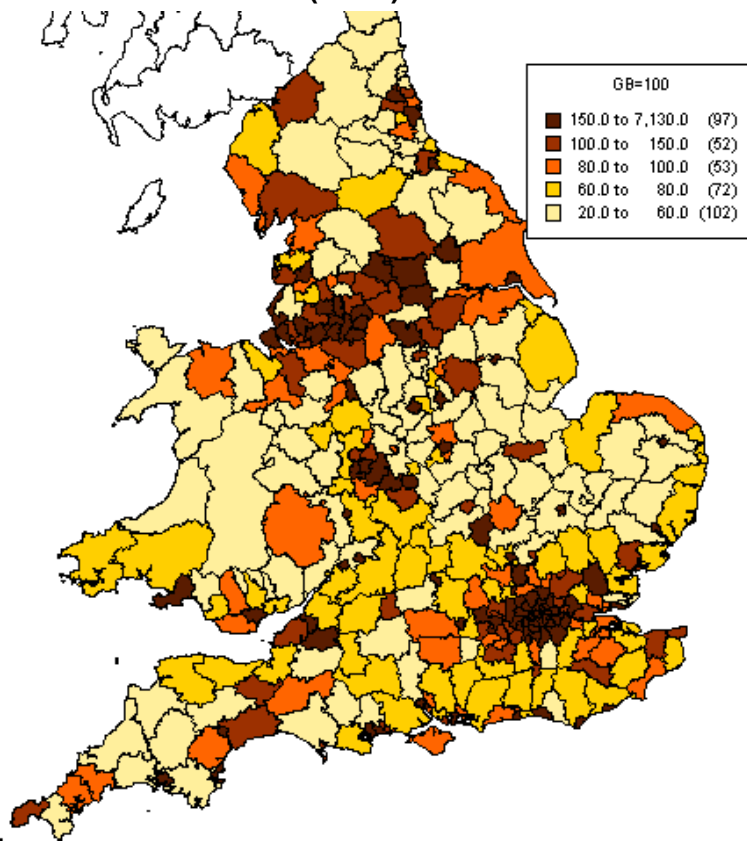
Service	Suffolk Coastal	Babergh	Forest Heath	Ipswich	Mid Suffolk	St. Edmundsbury	Waveney
Bank or Building Society	77.15	61.38	86.35	100.00	46.11	72.91	87.59
Doctors Surgery	91.12	94.57	91.16	100.00	77.46	89.29	96.15
Post Office	86.72	84.83	94.88	99.98	73.83	90.51	92.24
Primary School	88.52	89.62	86.73	100.00	84.33	88.24	94.74
Secondary School	73.41	75.12	78.07	100.00	67.60	80.68	90.61

Source: Local Knowledge, Rural Services Data Series, 2008

Amenities

Suffolk Coastal has a high density of heritage sites (second only to Ipswich in Suffolk). It has low density of listed buildings and cultural amenities, as may be expected in a large, sparsely populated area.

Local amenities score (2008)



Source: *Local Futures* - Source: *Local Knowledge*; *Treasures of Britain*; *BFI Film & Television Handbook*; *UK Theatres Online*; *Michelin Guide to Hotels, Restaurants and Pubs*; *ArtGuide.co.uk*; *Annual Business Inquiry*; *Commercial and Industrial Floorspace and Rateable Value Statistics*, *Green Flag awards*

Local amenities score: The relative provision of amenities such as cinema seats, theatres, museums, galleries, libraries, hotels, restaurants and pubs, and heritage sites compared with the national average. Local Amenities considers national heritage sites per 1,000 sq m, cultural amenities per 1,000 sq m and the proportion of employment in hotels and restaurants, *Cafe Culture, 2007* (counts of national cafe chains across the country), retail floorspace (,000sqm), sports arenas and green flag awards. Each one of these indicators was indexed to the GB Average, and then all indices were summed and averaged. The higher the score, the more amenities in the area.

Commercial & industrial property

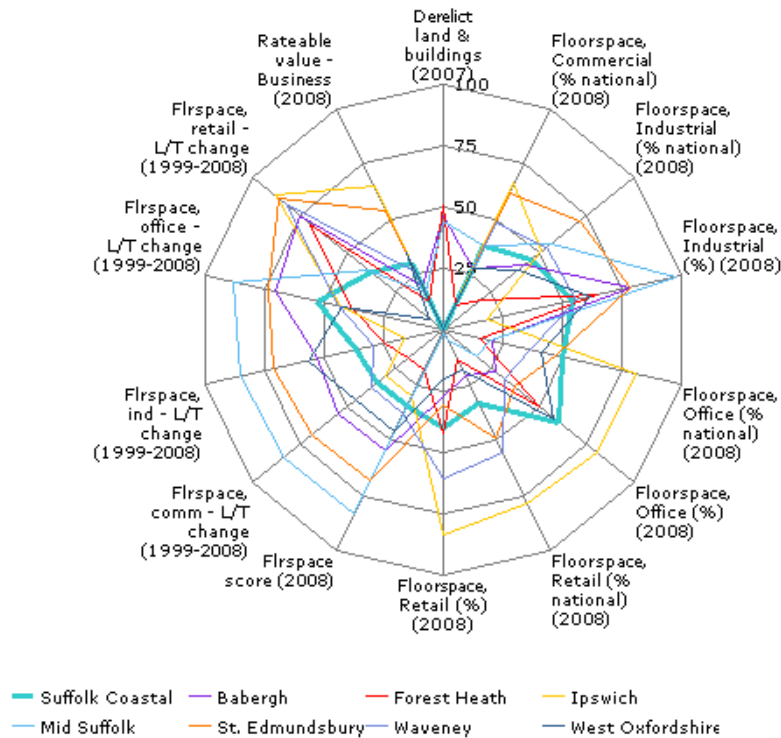
Reports researched for Suffolk Coastal District Council and for the Haven Gateway Partnership recommend increased retail capacity in Suffolk Coastal's market towns (despite the changed economic conditions), and that employment in research & development in the district is predicted to rise by 45% by 2026. This increase in employment should require more business space, but trends in remote working and hot-desking mean that requirements cannot be accurately predicted.

- CB Richard Ellis, 2008. Retail study update: Suffolk Coastal District Council, final report.
- CB Richard Ellis, 2009. Addendum to 2008 Suffolk Coastal Retail Study, final report.

State of the District report: Suffolk Coastal

- GVA Grimley, 2009. Suffolk Haven Gateway Employment Land Review & Strategic Sites Study.

Figures for the chart have not been updated.



Note: The chart displays the national ranking converted to a percentile score (The national average is always 50. Results above 50 (i.e. on the outside of the profile) are above the national median average and vice-versa below 50).

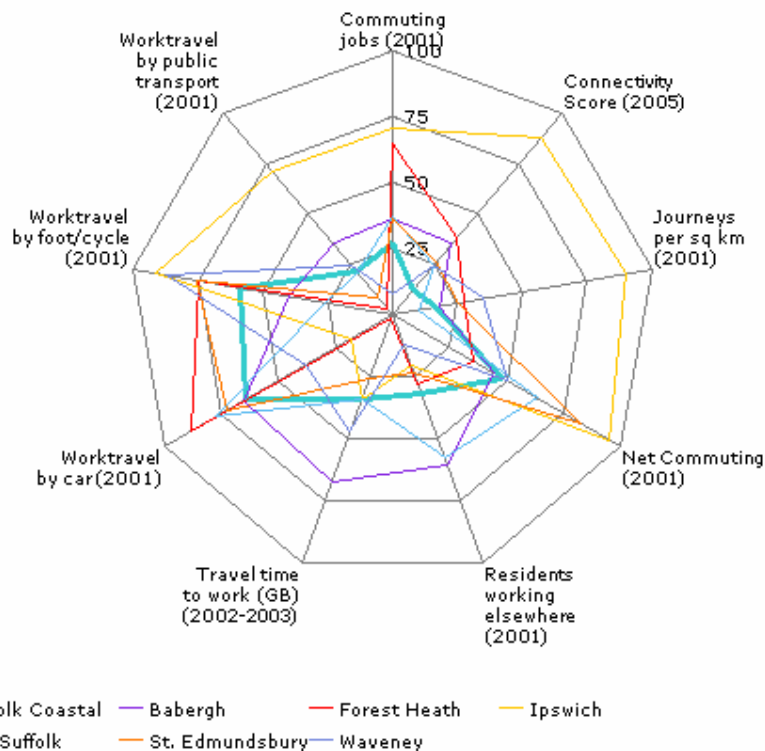
Connectivity

Most of the indicators in this section are taken from the 2001 census and the data presented here has therefore not changed since the last State of the District Report.

Suffolk Coastal performs well on some indicators (with below median levels of commuting jobs, journeys per km², residents working elsewhere and travel to work time), particularly as it is a sparsely-populated district. However, work travel by car is relatively high, and work travel by public transport proportionally low.

The connectivity score for Suffolk Coastal is very low as it is based on a count of railway stations, ports, airports and motorway junctions. A low score in this is usual for rural districts.

State of the District report: Suffolk Coastal



Note: The chart displays the national ranking converted to a percentile score (The national average is always 50. Results above 50 (i.e. on the outside of the profile) are above the national median average and vice-versa below 50).

For this profile, it is better to score low (i.e. to have a value towards the centre) on:

- Work travel by car
- Travel to work time
- Residents working elsewhere
- Commuting jobs (Jobs taken by in-commuters)

And high (i.e. to have a value towards the outer edges) on:

- Work travel by public transport
- Work travel by foot/cycle

Indicator definitions

Economy

Business & enterprise score: an indicator of the enterprise of businesses within the locality. The higher the score, the more business enterprise in an area. Business enterprise takes into consideration an area's business formation rate, the change of in VAT registered business stock, and new business survival rates. Each one of these 3 indicators was indexed to the GB value (business formation rates and new business survival rates were treble weighted), and then all 3 indices were summed and averaged.

Business closure rate: The percentage of businesses that have deregistered for VAT within the last year. This data is derived from annual workplace estimates based on the Inter Departmental Business Register (IDBR).

Earnings, mean: In ONS published reports, the standard practise for presenting earnings estimates is to use the figure for full-time workers rather than the total workers figure, and to use median earnings rather than the mean (the chart above uses total workers and the mean). The median is the value below which 50% of employees fall. It is preferred over the mean for earnings data as it is influenced less by extreme values and because of the skewed distribution of earnings data.

Economic change: This score provides an index of the percentage long term change in the total number of employees (by workplace) in relation to the national average.

Economic scale: Economic Scale indicates the size of an area's economy. It is created by weighting the areas GVA (Gross Value Added) by the area's employment. These two indicators are then indexed to the Great Britain average.

GVA: The level of Gross Value Added (which can provide an indication of the level of productivity) generated. Gross Value Added indicates the economic activity within a region by measuring the production of goods and services.

Industrial structure score: this workplace based figure provides an index of the proportion of all employed persons working in the following "Knowledge-driven" sectors: Aerospace (35.3), Electric machinery and optical equipment (30, 32, 33), Printing, publishing, recorded media (22.11-22.22), Chemicals (24), Energy (11, 23, 40, 41), Telecoms, computer & related services, R&D (72, 73, 64.2, 64.12), Finance, business services (65, 67, 74 (excluding 74.7, 74.82)), Air transport services (62), & Recreational & cultural services (92).

Knowledge-driven production sectors: Aerospace (35.3), Electric machinery and optical equipment (30, 32, 33), Printing, publishing, recorded media (22.11-22.22), Chemicals (24), Energy (11, 23, 40, 41).

Knowledge-driven services sectors: Telecoms, computer & related services, R&D (72, 73, 64.2, 64.12), Finance, business services (65, 67, 74 (excluding 74.7, 74.82)), Air transport services (62), & Recreational & cultural services (92).

Labour market score: This residence based indicator provides the proportion of people aged 16-59/64 (men/women) in employment indexed to the national average to provide a comparable figure in relation to the national trend.

New business survival rate (24 months from 2003): The proportion of businesses still registered for VAT 24 months after their initial registration. This is based on registrations and deregistrations of VAT-based enterprises, and is calculated from data collected from the Inter-Departmental Business Register (IDBR).

State of the District report: Suffolk Coastal

Productivity score: The productive capacity of an area. It is generated from average gross weekly earnings and GVA per head. Both these indicators are indexed to the GB value, and then summed and averaged.

"Public services" sector is: Public admin/defence (75); Education (80); Health and social work (85).

Skills & qualifications score (residents or workplace): composite presenting an index of the qualifications of an area's workforce, relative to the GB value. A higher score indicates a high level of local area qualifications amongst the labour market. Skills and qualifications scores are generated from summing the weighted percentages of an area's workforce qualified below NVQ2, at NVQ2, NVQ3 and NVQ4 and above, with each indicator indexed to the GB value. The sum of these indices is then divided by 4 to gain an overall composite.

Unemployment rate: The proportion of people aged 16-59/64 (men/women) claiming Job Seekers Allowance or National Insurance Credits. The higher the score, the more unemployed in a given area. This data is residence based.

Society

Access to social care: social service staff per capita; residential/nursing care places for those aged over 65.

Change in job supply: percentage increases in full-time equivalent employee jobs between 1991-2001 by place of work.

Educational quality: the quality of education provided to children at primary and secondary schools, in terms of numbers of pupils per teacher and the value added to pupils (Key Stage results).

Educational resourcing: average expenditure per pupil.

Effective preventative healthcare: measures of effectiveness in preventative healthcare: flu vaccine uptake; effective vaccination services; breast screening uptake; cervical screening uptake; family planning; low birth weight.

GVA: measures the contribution to the economy of each individual producer, industry or sector in the UK (ONS, 2002), and has recently replaced Gross Domestic Product (GDP) as the preferred indicator of regional economic prosperity (House of Commons, 2003). This indicator reflects regional economic strength.

Health capital: an individual's potential for health across the life course: modelled estimates of obesity; modelled estimates of blood pressure; modelled estimates of cholesterol; low birth weight (for infants).

Home environments: the quality of home environments: proportion of households containing only one person modelled estimate of severe lack of social support; air quality proportion of social and private housing in poor condition. Work and local environment: low-control at work and living environments: low-control in work environments; unemployment; violent crime; burglary; theft; criminal damage. Health care resourcing: net health care expenditure (in-patient and out-patient) per capita for medical, surgical and psychiatric specialties. Social care resourcing: personal social services; expenditure per capita. Effective primary care: GP per capita avoidable mortality under age 75 years; emergency admissions for chronic conditions. Access to secondary care: ratio of number of operations by population in need: joint replacement; cataract removal; coronary artery bypass graft/angioplasty (heart surgery to repair narrowed arteries).

Human capital: average examination results at three stages: Key Stages 2, 3 and 4.

Income: proportions of the population experiencing income deprivation in the area.

State of the District report: Suffolk Coastal

Knowledge worker score: This residence based figure provides an index of proportion of the working age population who are employed in Knowledge occupations based on SOC groups (1) Managers and Senior Officials; (2) Professional occupations; (3) Associate Professional and Technical occupations, based on place of residence. The figures in brackets are Standard Occupational Classification 2000 (SOC) codes. SOC codes are nationally recognised occupational groupings designed to capture type of work and the associated skills necessary for the job. These major SOC groups include the following occupations Corporate & Senior Officials, Production managers, Functional managers Quality and Customer Care, Financial Institutions and Office, Distribution Storage and Retail, Protective Service Officers, Health and Social Services, Farming, Horticulture, Forestry and associated fields, Hospitality & Leisure and Other Service Industries managers; Science Professionals; Engineering; Info & Communication Technology; Health; Teaching; Research; Legal; Business & Statistical; Architects; Town Planners; Surveyors Public Service Professionals; Librarians and Related Professionals; Science and Engineering Technicians; Draughtspersons & Building Inspectors and IT Service Delivery Occupations; Health Associate Professionals; Therapists; Social Welfare Associate Professionals; Protective Service Occupations; Artistic and Literary Occupations; Design Associate Professionals; Media Associate Professionals; Sports and Fitness Occupations; Transport Associate Professionals; Legal Associate Professionals; Business & Finance Associate Professionals; Sales & Related Associate Professionals; Conservation Associate Professionals and Public Service Associate Professionals. This is in relation to the national average, providing an indication of the level of knowledge sector employment relative to the national trend.

Lifestyle: measuring of healthy lifestyles: smoking; 5 a day; hospital admission rate for alcohol-related conditions; hospital admission rate for drug-related conditions; physical activity.

Local government resourcing: local government expenditure per capita to produce healthy local and home environments (excluding any social security spend). Expenditure on: personal social services; sports and recreation; environmental services.

Occupations – level 1: The proportion of the working age population who are employed in elementary occupations (9), based on place of work. The figure in brackets is a Standard Occupational Classification 2000 (SOC) code. SOC codes are nationally recognised occupational groupings designed to capture type of work and the associated skills necessary for the job. This major SOC group includes Elementary occupations in the following areas: Agricultural Occupations; Construction Occupations; Process Plant Occupations; Goods Storage Occupations; Administration; Personal Service; Cleaning Occupations; Security Occupations and Sales Occupations.

Occupations – level 2: The proportion of the working age population who are employed in lower skilled occupations. This is based on SOC groups Administrative & Secretarial (5), Personal Services, Care & Leisure (6), Sales & Customer Services (7), and Process & Machine Operatives (8). The figures in brackets are Standard Occupational Classification 2000 (SOC) codes. SOC codes are nationally recognised occupational groupings designed to capture type of work and the associated skills necessary for the job. This major SOC group includes Administrative: Government & Related; Finance; Records; Communications; General administrative; Secretarial and Related Occupations; Professionals, Healthcare & Related Personal Services; Childcare & Related Personal Services; Animal Care Services; Leisure & Travel Service Occupations; Hairdressers and Related Occupations; Housekeeping Occupations and Personal Services Occupations, Sales Assistants and Retail

State of the District report: Suffolk Coastal

Cashiers; Sales Related Occupations and Customer Service Occupations, Process Operatives; Plant and Machine Operatives; Assemblers and Routine Operatives; Construction Operatives; Transport Drivers and Operatives; Mobile Machine Drivers & Operatives.

Occupations – level 3: The proportion of the working age population who are employed in skilled technical occupations. This is based on SOC groups Associate Professionals & Technical (3) and Skilled Trades (4). The figures in brackets are Standard Occupational Classification 2000 (SOC) codes. SOC codes are nationally recognised occupational groupings designed to capture type of work and the associated skills necessary for the job. These major SOC groups include the following occupations Science and Engineering Technicians; Draughtspersons & Building Inspectors; IT Service Delivery Occupations; Health Associate Professionals; Therapists; Social Welfare Associate Professionals; Protective Service Occupations; Artistic and Literary Occupations; Design Associate Professionals; Media Associate Professionals; Sports and Fitness Occupations; Transport Associate Professionals; Legal Associate Professionals; Business & Finance Associate Professionals; Sales & Related Associate Professionals; Conservation Associate Professionals and Public Service Associate Professionals, Agricultural Trades; Metal Forming, Welding and Related; Metal Machining Fitting; Vehicle Trades; Electrical Trades; Construction Trades; Building Trades; Textiles and Garment Trades; Printing Trades; Food Preparation Trades and Skilled Trades.

Occupations – level 4: The proportion of the working age population who are employed in manager and professional occupations based on SOC groups (1) Managers and Senior Officials; (2) Professional occupations, based on place of work. The figures in brackets are Standard Occupational Classification 2000 (SOC) codes. SOC codes are nationally recognised occupational groupings designed to capture type of work and the associated skills necessary for the job. These major SOC groups include the following occupations Corporate & Senior Officials, Production managers, Functional managers Quality and Customer Care, Financial Institutions and Office, Distribution Storage and Retail, Protective Service Officers, Health and Social Services, Farming, Horticulture, Forestry and associated fields, Hospitality & Leisure and Other Service Industries managers; Science Professionals; Engineering; Info & Communication Technology; Health; Teaching; Research; Legal; Business & Statistical; Architects; Town Planners; Surveyors Public Service Professionals; Librarians and Related Professionals.

Physical morbidity: directly age and gender standardised illness and disability ratio.

Premature mortality: directly age and gender standardised rate of average annual years of life lost up to age 75 per 10,000 residents.

Preventative care resourcing: health service expenditure per capita on services promoting healthy areas.

Prosperity score: The mean average total income indexed to the national average. Total income figures are based on taxable income including all employees; pension recipients and self-employed people. The figures are defined by local authority area and are residence based.

Psychological morbidity: measures of mental ill health: suicide; benefits for mental health conditions; prescribing for anxiety/depression; psychiatric admissions.

Quality of social care: effectiveness of care for vulnerable individuals in society: • suicide; emergency admissions of over 75s; emergency psychiatric readmissions within 90 days of discharge.

Recreation facilities: access to recreational facilities per capita.

State of the District report: Suffolk Coastal

Social capital: levels of social capital: measure of the size of outmigration from an area; modelled estimate of the proportion of people who trust their neighbours.

Super Output Areas (SOAs) are statistically standard areas with varying numbers per ward (usually around 15 SOAs per ward). They allow standard comparison between areas based on number of households. The scores for the SOAs within each district were summed and then divided by the number of SOAs in that district to give an average score. There are no Super Output Areas (SOAs) in Suffolk Coastal that fall within the most deprived quintile according to the IMD score. The district IMD score ranks 274 out of 354 for deprivation, with 1 being the most deprived in the country.

Wealth: measures of high-value property areas: proportion of dwellings falling in Council Tax Bands F and above; average house prices by property type weighted by number of sales in each property type.

Environment

Affordability change: This indicator provides the percentage change in housing affordability ratio over time.

Affordability score: (Average House price (taken over four quarterly house price data releases)/Average gross weekly earnings)/England & Wales Average (Average House price (taken over four quarterly house price data releases)/Average gross weekly earnings (workplace based)). All districts are then ranked and the score for each area is reversed such that the area with the largest index score is attributed the lowest, and vice versa. This calculation was performed so that the most affordable areas would have the highest affordability score.

Change in commercial & industrial floorspace (long-term): The change in commercial (all bulk) floorspace. Calculation: (Commercial floorspace 2008-Commercial floorspace 1999)/Commercial floorspace 1999)*100.

Commuting jobs (Jobs taken by in-commuters): The proportion of jobs in the area filled by people who travel into the area to work each day from outside the district boundary.

Connectivity score: The connectivity index is based on proximity to and presence of airports; number of rail stations (excluding the underground); ports and motorway junctions. The resulting figure provides an indication of the areas connectivity, with figures over 100 indicating a higher than average level of connectivity.

Deprivation - Air quality (IMD 2007 Environment domain underlying indicator): This indicator is used with other indicators within the final living environment domain of the Index of Multiple Deprivation 2007. The score provides a weighted average of the scores for all the SOAs within the area. A result of 1 indicates the national average air quality score. Figures above 1 indicate a poorer air quality and vice versa for figures below 1. The score is based on a weighted average of SOA scores based on results of four types of air pollution including nitrogen dioxide, sulphur dioxide, particles and benzene.

Floorspace score: This score provides an index of the percentage change in the area of floor space used in the commercial sector. Commercial floor space is defined as all floor space used for non-domestic purposes including retail, office and industrial activities. This provides a score showing the change in floor space in relation to the national floor space change.

Journeys per sq km: The number of journeys taken daily in the area as a proportion of the total land area.

State of the District report: Suffolk Coastal

Natural beauty: This indicator provides a measure of the natural beauty in a given area. It consists of the following datasets; Areas of Outstanding Natural Beauty; Blue Flag Beaches (denoting high quality beaches); heritage coastlines; ancient woodland; nature reserves; national park designations and designation as an environmentally sensitive area. The higher the score, the more natural beauty in a given area.

Natural environment score: Natural environment indicates the quality of an areas physical environment. The composite is developed by combining Natural Beauty, Tranquillity, Average weather, air quality, green flag awards and green space. The higher the score, the higher the quality of the natural environment

Tranquillity: This is a measure of the tranquillity of an area based on the population density. The higher the score, the more tranquil an area is in terms of population density